

For Research Use Only

Syntaxin 10 Monoclonal antibody, PBS Only (Detector)

Catalog Number: 66821-1-PBS



Basic Information

Catalog Number: 66821-1-PBS	GenBank Accession Number: BC017237	Purification Method: Protein G purification
Size: 100ug , Concentration: 1mg/ml by Nanodrop;	GeneID (NCBI): 8677	CloneNo.: 1B1C3
Source: Mouse	UNIPROT ID: O60499	
Isotype: IgG1	Full Name: syntaxin 10	
Immunogen Catalog Number: AG27861	Calculated MW: 28 kDa	
	Observed MW: 34 kDa	

Applications

Tested Applications:
WB, IF/ICC, Cytometric bead array, Indirect ELISA

Species Specificity:
human

Product Information

66821-1-PBS targets Syntaxin 10 as part of a matched antibody pair:

MP51170-3: 66821-5-PBS capture and 66821-1-PBS detection (validated in Cytometric bead array)

Unconjugated mouse monoclonal antibody pair in PBS only (BSA and azide free) storage buffer at a concentration of 1 mg/mL, ready for conjugation.

This conjugation ready format makes antibodies ideal for use in many applications including: ELISAs, multiplex assays requiring matched pairs, mass cytometry, and multiplex imaging applications. Antibody use should be optimized by the end user for each application and assay.

Background Information

Syntaxin 10 (STX10), also named as SYN10, belongs to the syntaxin family. Syntaxins are target membrane SNAREs (Soluble NSF attachment protein receptors) which are membrane components that determine the specificity of the docking and fusion of vesicles to target membranes.

Storage

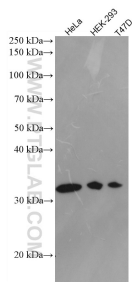
Storage:
Store at -80°C.

Storage Buffer:
PBS Only

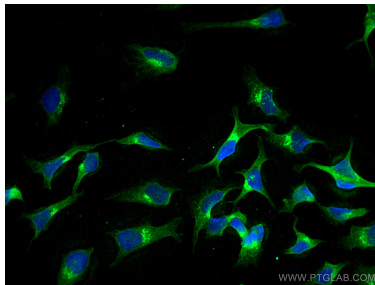
For technical support and original validation data for this product please contact:
T: 1 (888) 4PTGLAB (1-888-478-4522) (toll free in USA), or 1(312) 455-8498 (outside USA)
E: proteintech@ptglab.com
W: ptglab.com

This product is exclusively available under Proteintech Group brand and is not available to purchase from any other manufacturer.

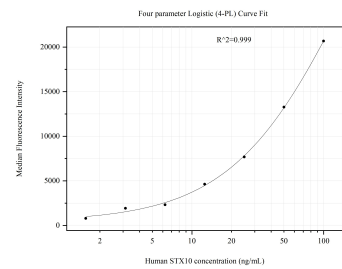
Selected Validation Data



Various lysates were subjected to SDS PAGE followed by western blot with 66821-1-Ig (Syntaxin 10 antibody) at dilution of 1:2000 incubated at room temperature for 1.5 hours. This data was developed using the same antibody clone with 66821-1-PBS in a different storage buffer formulation.



Immunofluorescent analysis of (-20°C Methanol) fixed HeLa cells using Syntaxin 10 antibody (66821-1-Ig, Clone: 1B1C3) at dilution of 1:400 and CoraLite®488-Conjugated AffiniPure Goat Anti-Mouse IgG(H+L). This data was developed using the same antibody clone with 66821-1-PBS in a different storage buffer formulation.



Cytometric bead array standard curve of MP51170-3, STX10 Monoclonal Matched Antibody Pair, PBS Only. Capture antibody: 66821-5-PBS. Detection antibody: 66821-1-PBS. Standard: Ag27861. Range: 1.563-100 ng/mL