

For Research Use Only

VEGFA Monoclonal antibody, PBS Only

Catalog Number: 66828-1-PBS

Featured Product



Basic Information

Catalog Number:

66828-1-PBS

Size:

100ug, Concentration: 1mg/ml by Nanodrop;

Source:

Mouse

Isotype:

IgG2b

Immunogen Catalog Number:

AG13500

GenBank Accession Number:

BC065522

GeneID (NCBI):

7422

UNIPROT ID:

P15692

Full Name:

vascular endothelial growth factor A

Calculated MW:

412 aa, 46 kDa

Observed MW:

43 kDa

Purification Method:

Protein A purification

CloneNo.:

2E2H9

Applications

Tested Applications:

WB, IHC, IF/ICC, IF-P, FC (Intra), Indirect ELISA

Species Specificity:

human

Background Information

VEGFA, also named as VEGF or VPF, belongs to the PDGF/VEGF growth factor family. It is a growth factor active in angiogenesis, vasculogenesis and endothelial cell growth. VEGFA induces endothelial cell proliferation, promotes cell migration, inhibits apoptosis and induces permeabilization of blood vessels. It binds to the FLT1/VEGFR1 and KDR/VEGFR2 receptors, heparan sulfate and heparin. Defects in VEGFA are associated with microvascular complications of diabetes type 1 (MVC1D1). VEGFA has 17 isoforms with MW from 16 to 45 kDa. Some isoforms have homodimer forms (e.g.; VEGFA189 38kDa or VEGFA110 34 kDa). VEGF-A exists in at least seven homodimeric isoforms. The monomers consist of 121, 145, 148, 165, 183, 189, or 206 amino acids (PMID:15602010). This antibody can recognize all VEGFA isoforms.

Storage

Storage:

Store at -80°C.

Storage Buffer:

PBS Only

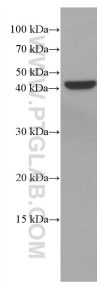
For technical support and original validation data for this product please contact:

T: 1 (888) 4PTGLAB (1-888-478-4522) (toll free in USA), or 1(312) 455-8498 (outside USA)

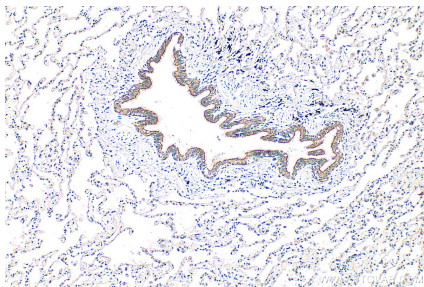
E: proteintech@ptglab.com
W: ptglab.com

This product is exclusively available under Proteintech Group brand and is not available to purchase from any other manufacturer.

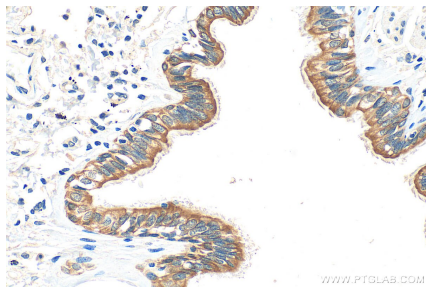
Selected Validation Data



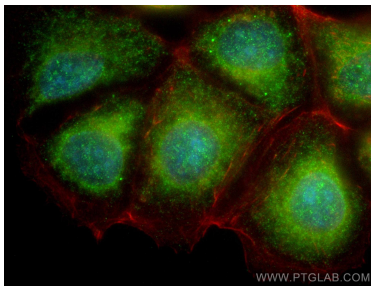
MCF-7 cells were subjected to SDS PAGE followed by western blot with 66828-1-Ig (VEGFA antibody) at dilution of 1:3000 incubated at room temperature for 1.5 hours. This data was developed using the same antibody clone with 66828-1-PBS in a different storage buffer formulation.



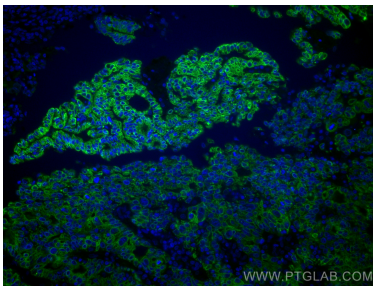
Immunohistochemical analysis of paraffin-embedded human lung cancer tissue slide using 66828-1-Ig (VEGFA antibody) at dilution of 1:1000 (under 10x lens). Heat mediated antigen retrieval with Tris-EDTA buffer (pH 9.0). This data was developed using the same antibody clone with 66828-1-PBS in a different storage buffer formulation.



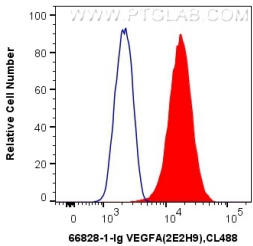
Immunohistochemical analysis of paraffin-embedded human lung cancer tissue slide using 66828-1-Ig (VEGFA antibody) at dilution of 1:1000 (under 40x lens). Heat mediated antigen retrieval with Tris-EDTA buffer (pH 9.0). This data was developed using the same antibody clone with 66828-1-PBS in a different storage buffer formulation.



Immunofluorescent analysis of (-20°C Ethanol) fixed MCF-7 cells using VEGFA antibody (66828-1-Ig, Clone: 2E2H9) at dilution of 1:400 and CoraLite®488-Conjugated AffiniPure Goat Anti-Mouse IgG(H+L). This data was developed using the same antibody clone with 66828-1-PBS in a different storage buffer formulation.



Immunofluorescent analysis of (4% PFA) fixed human endometrial cancer tissue using VEGFA antibody (66828-1-Ig, Clone: 2E2H9) at dilution of 1:400 and CoraLite®488-Conjugated AffiniPure Goat Anti-Mouse IgG(H+L). This data was developed using the same antibody clone with 66828-1-PBS in a different storage buffer formulation.



1X10⁶ MCF-7 cells were intracellularly stained with 0.5 ug Anti-Human VEGFA (66828-1-Ig, Clone:2E2H9) and CoraLite®488-Conjugated AffiniPure Goat Anti-Mouse IgG(H+L) at dilution 1:1000 (red), or 0.5 ug Mouse IgG2b Isotype Control (66360-3-Ig, Clone: K11B8C4B5) (blue). Cells were fixed with 4% PFA and permeabilized with Flow Cytometry Perm Buffer (PF00011-C). This data was developed using the same antibody clone with 66828-1-PBS in a

