

For Research Use Only

# IL-12RB1/CD212 Monoclonal antibody

Catalog Number: 66829-1-Ig

Featured Product



## Basic Information

Catalog Number:

66829-1-Ig

Size:

150ul, Concentration: 1000 ug/ml by Nanodrop and 500 ug/ml by Bradford method using BSA as the standard;

Source:

Mouse

Isotype:

IgG1

Immunogen Catalog Number:

AG6920

GenBank Accession Number:

BC029121

GeneID (NCBI):

3594

UNIPROT ID:

P42701

Full Name:

interleukin 12 receptor, beta 1

Calculated MW:

662 aa, 73 kDa

Observed MW:

100-110 kDa

Purification Method:

Protein G purification

CloneNo.:

1E10E10

Recommended Dilutions:

WB 1:1000-1:8000

IF/ICC 1:400-1:1600

## Applications

Tested Applications:

WB, IF/ICC, ELISA

Species Specificity:

human

Positive Controls:

WB : Ramos cells, TF-1 cells, THP-1 cells, Jurkat cells, Raji cells, K-562 cells, Daudi cells

IF/ICC : THP-1 cells,

## Background Information

IL12RB1, also named as Interleukin-12 receptor subunit beta-1 or CD212, is a 662 amino acid protein, which contains 5 fibronectin type-III domains and belongs to the type I cytokine receptor family. Type 2 subfamily. IL12RB1 localizes in the membrane and functions as an interleukin receptor which binds interleukin-12 with low affinity and is involved in IL12 transduction. Associated with IL12RB2 it forms a functional, high affinity receptor for IL12. Associates also with IL23R to form the interleukin-23 receptor which functions in IL23 signal transduction probably through activation of the Jak-Stat signaling cascade.

## Storage

Storage:

Store at -20°C. Stable for one year after shipment.

Storage Buffer:

PBS with 0.02% sodium azide and 50% glycerol, pH7.3

Aliquoting is unnecessary for -20°C storage

\*\*\* 20ul sizes contain 0.1% BSA

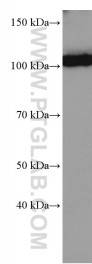
For technical support and original validation data for this product please contact:

T: 1 (888) 4PTGLAB (1-888-478-4522) (toll free in USA), or 1(312) 455-8498 (outside USA)

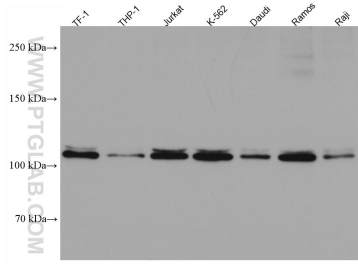
E: [proteintech@ptglab.com](mailto:proteintech@ptglab.com)  
W: [ptglab.com](http://ptglab.com)

This product is exclusively available under Proteintech Group brand and is not available to purchase from any other manufacturer.

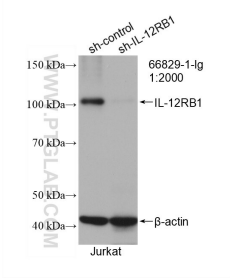
Selected Validation Data



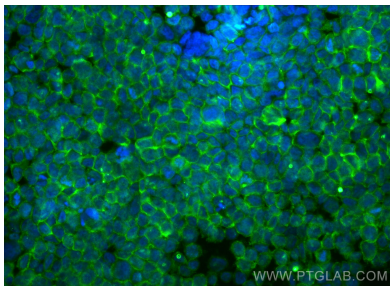
Ramos cells were subjected to SDS PAGE followed by western blot with 66829-1-Ig (IL12RB1 antibody) at dilution of 1:4000 incubated at room temperature for 1.5 hours.



Various lysates were subjected to SDS PAGE followed by western blot with 66829-1-Ig (IL12RB1 antibody) at dilution of 1:10000 incubated at room temperature for 1.5 hours.



WB result of IL-12RB1 antibody (66829-1-Ig; 1:600; incubated at room temperature for 1.5 hours) with sh-Control and sh-IL-12RB1 transfected Jurkat cells.



Immunofluorescent analysis of (4% PFA) fixed THP-1 cells using IL-12RB1 antibody (66829-1-Ig, Clone: 1E10E10 ) at dilution of 1:800 and CoraLite®488-Conjugated Goat Anti-Mouse IgG(H+L) (SA00013-1).