

For Research Use Only

# IL-12RB1 Monoclonal antibody

Catalog Number: 66829-1-Ig **Featured Product**



## Basic Information

<b>Catalog Number:</b> 66829-1-Ig	<b>GenBank Accession Number:</b> BC029121	<b>Purification Method:</b> Protein G purification
<b>Size:</b> 150ul , Concentration: 1000 µg/ml by Nanodrop and 500 µg/ml by Bradford method using BSA as the standard;	<b>GeneID (NCBI):</b> 3594	<b>CloneNo.:</b> 1E10E10
<b>Source:</b> Mouse	<b>Full Name:</b> interleukin 12 receptor, beta 1	<b>Recommended Dilutions:</b> WB 1:1000-1:8000
<b>Isotype:</b> IgG1	<b>Calculated MW:</b> 662 aa, 73 kDa	
<b>Immunogen Catalog Number:</b> AG6920	<b>Observed MW:</b> 100-110 kDa	

## Applications

**Tested Applications:**  
FC, WB, ELISA

**Species Specificity:**  
Human

**Positive Controls:**

WB : Ramos cells, TF-1 cells, THP-1 cells, Jurkat cells, Raji cells, K-562 cells, Daudi cells

## Background Information

IL12RB1, also named as Interleukin-12 receptor subunit beta-1 or CD212, is a 662 amino acid protein, which contains 5 fibronectin type-III domains and belongs to the type I cytokine receptor family. Type 2 subfamily. IL12RB1 localizes in the membrane and functions as an interleukin receptor which binds interleukin-12 with low affinity and is involved in IL12 transduction. Associated with IL12RB2 it forms a functional, high affinity receptor for IL12. Associates also with IL23R to form the interleukin-23 receptor which functions in IL23 signal transduction probably through activation of the Jak-Stat signaling cascade.

## Storage

**Storage:**  
Store at -20°C. Stable for one year after shipment.

**Storage Buffer:**  
PBS with 0.02% sodium azide and 50% glycerol pH 7.3.

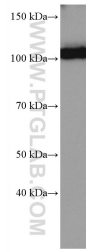
Aliquoting is unnecessary for -20°C storage

\*\*\* 20ul sizes contain 0.1% BSA

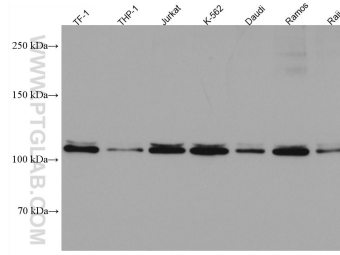
For technical support and original validation data for this product please contact:  
T: 1 (888) 4PTGLAB (1-888-478-4522) (toll free in USA), or 1(312) 455-8498 (outside USA)      E: proteintech@ptglab.com  
W: ptglab.com

This product is exclusively available under Proteintech Group brand and is not available to purchase from any other manufacturer.

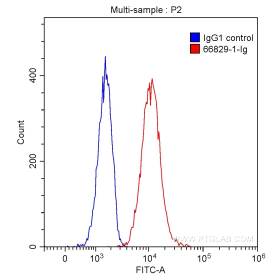
## Selected Validation Data



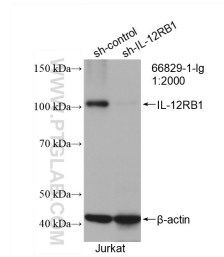
Ramos cells were subjected to SDS PAGE followed by western blot with 66829-1-Ig (IL12RB1 antibody) at dilution of 1:4000 incubated at room temperature for 1.5 hours.



Various lysates were subjected to SDS PAGE followed by western blot with 66829-1-Ig (IL12RB1 antibody) at dilution of 1:10000 incubated at room temperature for 1.5 hours.



$1 \times 10^6$  K-562 cells were stained with 0.20 ug/test Anti-Human IL12RB1 (66829-1-Ig, Clone:1E10E10) (red) or 0.20 ug control antibody (blue) and CoraLite@488-Conjugated AffiniPure Goat Anti-Mouse IgG(H+L) with dilution 1:1000. Fixed with 90% MeOH.



WB result of IL-12RB1 antibody (66829-1-Ig; 1:600; incubated at room temperature for 1.5 hours) with sh-Control and sh-IL-12RB1 transfected Jurkat cells.