

For Research Use Only

# ASGR2 Monoclonal antibody, PBS Only



Catalog Number: 66831-1-PBS

## Basic Information

<b>Catalog Number:</b> 66831-1-PBS	<b>GenBank Accession Number:</b> BC017251	<b>Purification Method:</b> Protein A purification
<b>Size:</b> 100ug , Concentration: 1 mg/ml by Nanodrop;	<b>GeneID (NCBI):</b> 433	<b>CloneNo.:</b> 2A5C12
<b>Source:</b> Mouse	<b>UNIPROT ID:</b> P07307	
<b>Isotype:</b> IgG2a	<b>Full Name:</b> asialoglycoprotein receptor 2	
<b>Immunogen Catalog Number:</b> AG2037	<b>Calculated MW:</b> 39 kDa	
	<b>Observed MW:</b> 36 kDa	

## Applications

**Tested Applications:**  
WB, Indirect ELISA

**Species Specificity:**  
Human, rat

## Background Information

Asialoglycoprotein receptor (ASGPR), also known as the hepatic galactose/N-acetylglucosamine (GlcNAc) receptor or Ashwell receptor, is a C-type lectin expressed exclusively in hepatic parenchymal cells. ASGPR consists of two subunits, a major subunit (ASGR1, HL-1) and a minor subunit (ASGR2, HL-2), and specifically recognizes terminal  $\beta$ -linked galactose or GlcNAc on circulating glycoproteins or cells. This receptor plays a critical role in serum glycoprotein homeostasis by mediating the endocytosis and lysosomal degradation of glycoproteins that contain terminal galactose or GlcNAc residues. ASGPR may facilitate hepatic infection by multiple viruses including hepatitis B, and is also a target for liver-specific drug delivery.

## Storage

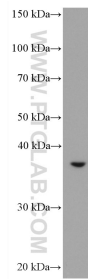
**Storage:**  
Store at -80°C.

**Storage Buffer:**  
PBS Only

For technical support and original validation data for this product please contact:  
T: 1 (888) 4PTGLAB (1-888-478-4522) (toll free in USA), or 1(312) 455-8498 (outside USA)  
E: [proteintech@ptglab.com](mailto:proteintech@ptglab.com)  
W: [ptglab.com](http://ptglab.com)

This product is exclusively available under Proteintech Group brand and is not available to purchase from any other manufacturer.

## Selected Validation Data



SMMC-7721 cells were subjected to SDS PAGE followed by western blot with 66831-1-Ig (ASGR2 antibody) at dilution of 1:2500 incubated at room temperature for 1.5 hours. This data was developed using the same antibody clone with 66831-1-PBS in a different storage buffer formulation.