

For Research Use Only

MBNL1 Monoclonal antibody

Catalog Number: 66837-1-Ig **4 Publications**



Basic Information

Catalog Number: 66837-1-Ig	GenBank Accession Number: BC050535	Purification Method: Protein A purification
Size: 150ul , Concentration: 1000 ug/ml by Nanodrop;	GeneID (NCBI): 4154	CloneNo.: 1H2C12
Source: Mouse	UNIPROT ID: Q9NR56	Recommended Dilutions: WB 1:1000-1:5000 IHC 1:250-1:1000 IF/ICC 1:50-1:500
Isotype: IgG1	Full Name: muscleblind-like (Drosophila)	
Immunogen Catalog Number: AG7752	Calculated MW: 42 kDa	
	Observed MW: 40 kDa	

Applications

Tested Applications: WB, IHC, IF/ICC, ELISA	Positive Controls: WB : HeLa cells, rat heart tissue, Jurkat cells, HEK-293 cells, C2C12 cells IHC : human breast cancer tissue, IF/ICC : HepG2 cells,
Cited Applications: WB, IP, IF, IHC	
Species Specificity: Human, mouse, rat, pig	
Cited Species: human	
Note-IHC: suggested antigen retrieval with TE buffer pH 9.0; (*) Alternatively, antigen retrieval may be performed with citrate buffer pH 6.0	

Background Information

MBNL1 (muscleblind-like 1) is one of the MBNL proteins containing 3 members (MBNL1-3) in vertebrates. And MBNL1 is widely expressed in adult tissues including brain, heart and skeletal muscle (PMID:25274774). As a highly conserved RNA-binding protein, MBNL1 regulates alternative splicing, alternative polyadenylation, mRNA stability and mRNA localization in the nucleus. The neurological diseases DM1 and DM2 (myotonic dystrophy type 1 and type2) are caused by expansion of repetitive sequences in non-coding regions in the DMPK gene because of the inappropriate patterns of alternative splicing owing to MBNL1(PMID:24354850). The antibody could recognize the common full-length protein in applications.

Notable Publications

Author	Pubmed ID	Journal	Application
Yubo Zhao	36064939	Cell Death Dis	WB,IHC,IF,IP
Chenggang Zhang	36643863	Int J Nanomedicine	IF
Chuanqing Jing	38035073	Front Immunol	WB

Storage

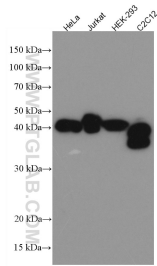
Storage:
Store at -20°C. Stable for one year after shipment.
Storage Buffer:
PBS with 0.02% sodium azide and 50% glycerol pH 7.3.
Aliquoting is unnecessary for -20°C storage

*** 20ul sizes contain 0.1% BSA

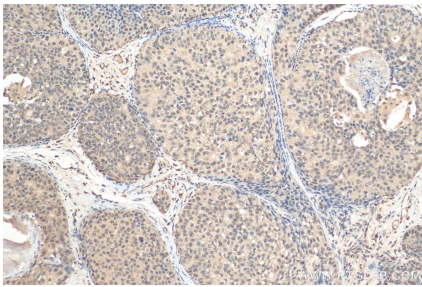
For technical support and original validation data for this product please contact:
T: 1 (888) 4PTGLAB (1-888-478-4522) (toll free in USA), or 1(312) 455-8498 (outside USA)
E: proteintech@ptglab.com
W: ptglab.com

This product is exclusively available under Proteintech Group brand and is not available to purchase from any other manufacturer.

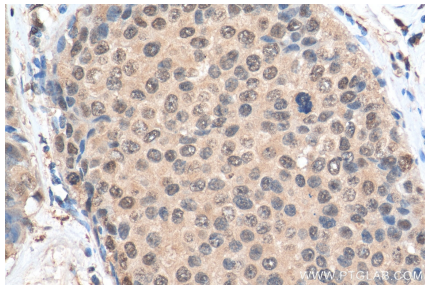
Selected Validation Data



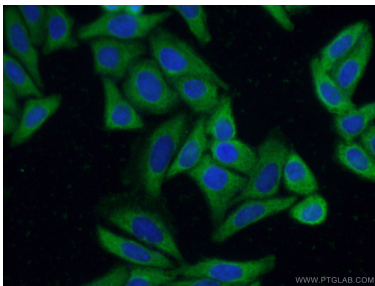
Various lysates were subjected to SDS PAGE followed by western blot with 66837-1-Ig (MBNL1 antibody) at dilution of 1:5000 incubated at room temperature for 1.5 hours.



Immunohistochemical analysis of paraffin-embedded human breast cancer tissue slide using 66837-1-Ig (MBNL1 antibody) at dilution of 1:500 (under 10x lens). Heat mediated antigen retrieval with Tris-EDTA buffer (pH 9.0).



Immunohistochemical analysis of paraffin-embedded human breast cancer tissue slide using 66837-1-Ig (MBNL1 antibody) at dilution of 1:500 (under 40x lens). Heat mediated antigen retrieval with Tris-EDTA buffer (pH 9.0).



Immunofluorescent analysis of (-20°C Ethanol) fixed HepG2 cells using 66837-1-Ig (MBNL1 antibody) at dilution of 1:50 and Alexa Fluor 488-Conjugated Goat Anti-Mouse IgG(H+L).