

MBNL1 Monoclonal antibody, PBS Only

Catalog Number: 66837-1-PBS

Basic Information

Catalog Number: 66837-1-PBS	GenBank Accession Number: BC050535	Purification Method: Protein A purification
Size: 100ug, Concentration: 1 mg/ml by Nanodrop;	GeneID (NCBI): 4154	CloneNo.: 1H2C12
Source: Mouse	UNIPROT ID: Q9NR56	
Isotype: IgG1	Full Name: muscleblind-like (Drosophila)	
Immunogen Catalog Number: AG7752	Calculated MW: 42 kDa	
	Observed MW: 40 kDa	

Applications

Tested Applications:
WB, IF, IHC, ELISA

Species Specificity:
Human, mouse, rat, pig

Background Information

MBNL1 (muscleblind-like 1) is one of the MBNL proteins containing 3 members (MBNL1-3) in vertebrates. And MBNL1 is widely expressed in adult tissues including brain, heart and skeletal muscle (PMID:25274774). As a highly conserved RNA-binding protein, MBNL1 regulates alternative splicing, alternative polyadenylation, mRNA stability and mRNA localization in the nucleus. The neurological diseases DM1 and DM2 (myotonic dystrophy type 1 and type2) are caused by expansion of repetitive sequences in non-coding regions in the DMPK gene because of the inappropriate patterns of alternative splicing owing to MBNL1 (PMID:24354850). The antibody could recognize the common full-length protein in applications.

Storage

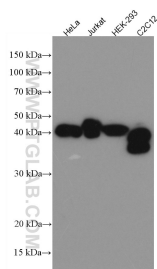
Storage:
Store at -80°C.

Storage Buffer:
PBS only

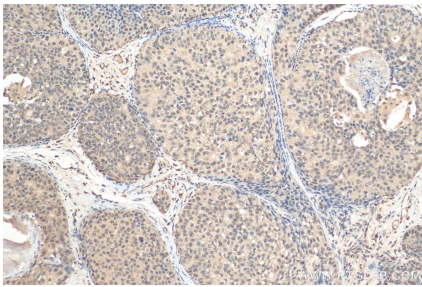
For technical support and original validation data for this product please contact:
T: 1 (888) 4PTGLAB (1-888-478-4522) (toll free in USA), or 1(312) 455-8498 (outside USA)
E: proteintech@ptglab.com
W: ptglab.com

This product is exclusively available under Proteintech Group brand and is not available to purchase from any other manufacturer.

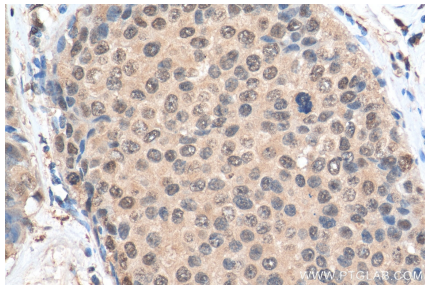
Selected Validation Data



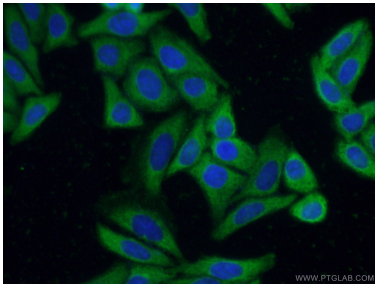
Various lysates were subjected to SDS PAGE followed by western blot with 66837-1-Ig (MBNL1 antibody) at dilution of 1:5000 incubated at room temperature for 1.5 hours. This data was developed using the same antibody clone with 66837-1-PBS in a different storage buffer formulation.



Immunohistochemical analysis of paraffin-embedded human breast cancer tissue slide using 66837-1-Ig (MBNL1 antibody) at dilution of 1:500 (under 10x lens). Heat mediated antigen retrieval with Tris-EDTA buffer (pH 9.0). This data was developed using the same antibody clone with 66837-1-PBS in a different storage buffer formulation.



Immunohistochemical analysis of paraffin-embedded human breast cancer tissue slide using 66837-1-Ig (MBNL1 antibody) at dilution of 1:500 (under 40x lens). Heat mediated antigen retrieval with Tris-EDTA buffer (pH 9.0). This data was developed using the same antibody clone with 66837-1-PBS in a different storage buffer formulation.



Immunofluorescent analysis of (-20°C Ethanol) fixed HepG2 cells using 66837-1-Ig (MBNL1 antibody) at dilution of 1:50 and Alexa Fluor 488-Conjugated AffiniPure Goat Anti-Mouse IgG(H+L). This data was developed using the same antibody clone with 66837-1-PBS in a different storage buffer formulation.