

For Research Use Only

# TFPI Monoclonal antibody

Catalog Number: 66842-1-Ig 1 Publications



## Basic Information

Catalog Number:	GenBank Accession Number:	Purification Method:
66842-1-Ig	BC015514	Protein A purification
Size:	GeneID (NCBI):	CloneNo.:
150ul , Concentration: 1700 µg/ml by Nanodrop and 1000 µg/ml by Bradford method using BSA as the standard;	7035	1B12F11
Source:	Full Name:	Recommended Dilutions:
Mouse	tissue factor pathway inhibitor (lipoprotein-associated coagulation inhibitor)	WB 1:1000-1:3000
Isotype:	Calculated MW:	
IgG2a	251aa,29 kDa; 304aa,35 kDa	
Immunogen Catalog Number:	Observed MW:	
AG14980	35-38 kDa	

## Applications

Tested Applications:	Positive Controls:
WB,ELISA	WB : human placenta tissue, HepG2 cells
Cited Applications:	
WB	
Species Specificity:	
Human	
Cited Species:	
human	

## Background Information

Tissue factor pathway inhibitor (TFPI) is a critical anticoagulant protein present in endothelium and platelets. TFPI is produced as two major isoforms in humans, TFPIa and TFPIb that result from alternative splicing. The TFPIb isoform localizes to the endothelium surface where it is a potent inhibitor of tissue factor-factor VIIa complexes that initiate blood coagulation. The TFPIa isoform is present in platelets. TFPI is a Kunitz-type serine protease inhibitor that exerts anticoagulant activity by blocking early procoagulant stimuli. TFPI can enhance anti-thrombotic treatment in sepsis, inflammatory diseases, and cardiovascular diseases.

## Notable Publications

Author	Pubmed ID	Journal	Application
Ting Li	34238922	Cell Death Dis	WB

## Storage

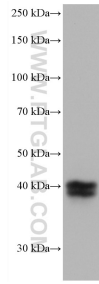
Storage:  
Store at -20°C. Stable for one year after shipment.  
Storage Buffer:  
PBS with 0.02% sodium azide and 50% glycerol pH 7.3.  
Aliquoting is unnecessary for -20°C storage

\*\*\* 20ul sizes contain 0.1% BSA

For technical support and original validation data for this product please contact:  
T: 1 (888) 4PTGLAB (1-888-478-4522) (toll free in USA), or 1(312) 455-8498 (outside USA)  
E: proteintech@ptglab.com  
W: ptglab.com

This product is exclusively available under Proteintech Group brand and is not available to purchase from any other manufacturer.

## Selected Validation Data



human placenta tissue were subjected to SDS PAGE followed by western blot with 66842-1-Ig (TFPI antibody) at dilution of 1:2000 incubated at room temperature for 1.5 hours.