

For Research Use Only

# GLUT4 Monoclonal antibody, PBS Only

Catalog Number: 66846-1-PBS



## Basic Information

<b>Catalog Number:</b> 66846-1-PBS	<b>GenBank Accession Number:</b> BC069615	<b>Purification Method:</b> Protein A purification
<b>Size:</b> 100ug , Concentration: 1mg/ml by Nanodrop;	<b>GeneID (NCBI):</b> 6517	<b>CloneNo.:</b> 3G7C9
<b>Source:</b> Mouse	<b>UNIPROT ID:</b> P14672	
<b>Isotype:</b> IgG2b	<b>Full Name:</b> solute carrier family 2 (facilitated glucose transporter), member 4	
<b>Immunogen Catalog Number:</b> AG15390	<b>Calculated MW:</b> 509 aa, 55 kDa	
	<b>Observed MW:</b> 48-50 kDa	

## Applications

**Tested Applications:**  
WB, IHC, IF/ICC, IF-P, FC (Intra), Indirect ELISA

**Species Specificity:**  
human, mouse, rat, pig

## Background Information

GLUT4 is a member of GLUT family of transmembrane hexose transporters. It is an INS receptor that mediates INS-stimulated glucose transport in fat and muscle where it is predominantly expressed. In response to INS stimulation, GLUT4 experienced translocation from trans-Golgi network to plasma membrane. The impairment of GLUT4 translocation is associated with diabetes.

## Storage

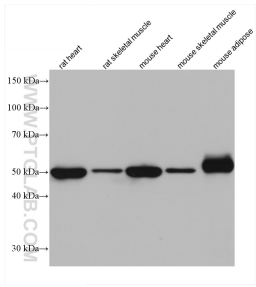
**Storage:**  
Store at -80°C.

**Storage Buffer:**  
PBS Only

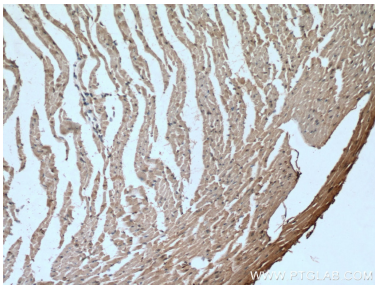
For technical support and original validation data for this product please contact:  
T: 1 (888) 4PTGLAB (1-888-478-4522) (toll free in USA), or 1(312) 455-8498 (outside USA)  
E: [proteintech@ptglab.com](mailto:proteintech@ptglab.com)  
W: [ptglab.com](http://ptglab.com)

This product is exclusively available under Proteintech Group brand and is not available to purchase from any other manufacturer.

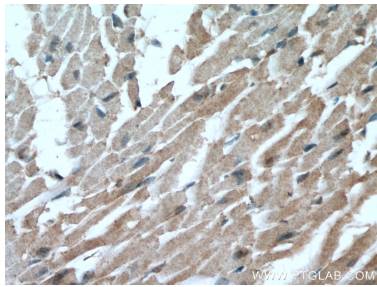
Selected Validation Data



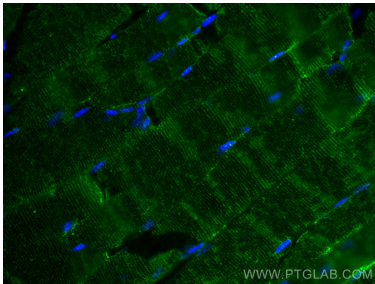
Various lysates were subjected to SDS PAGE followed by western blot with 66846-1-Ig (GLUT4 antibody) at dilution of 1:3000 incubated at room temperature for 1.5 hours. This data was developed using the same antibody clone with 66846-1-PBS in a different storage buffer formulation.



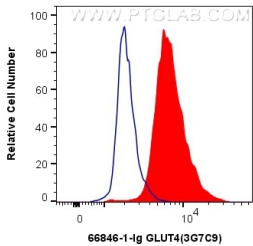
Immunohistochemical analysis of paraffin-embedded mouse heart tissue slide using 66846-1-Ig (GLUT4 antibody) at dilution of 1:200 (under 10x lens). Heat mediated antigen retrieval with Tris-EDTA buffer (pH 9.0). This data was developed using the same antibody clone with 66846-1-PBS in a different storage buffer formulation.



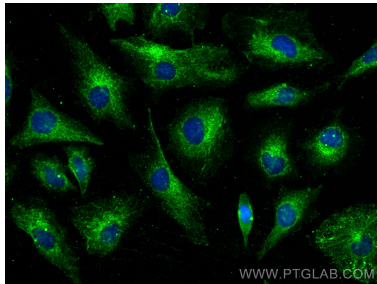
Immunohistochemical analysis of paraffin-embedded mouse heart tissue slide using 66846-1-Ig (GLUT4 antibody) at dilution of 1:200 (under 40x lens). Heat mediated antigen retrieval with Tris-EDTA buffer (pH 9.0). This data was developed using the same antibody clone with 66846-1-PBS in a different storage buffer formulation.



Immunofluorescent analysis of (4% PFA) fixed mouse skeletal muscle tissue using GLUT4 antibody (66846-1-Ig, Clone: 3G7C9) at dilution of 1:400 and CoraLite®488-Conjugated AffiniPure Goat Anti-Mouse IgG(H+L). This data was developed using the same antibody clone with 66846-1-PBS in a different storage buffer formulation.



1X10<sup>6</sup> HEK-293 cells were intracellularly stained with 0.4 ug Anti-Human GLUT4 (66846-1-Ig, Clone:3G7C9) and CoraLite®488-Conjugated AffiniPure Goat Anti-Mouse IgG(H+L) at dilution 1:1000 (red), or 0.4 ug Mouse IgG2b Isotype Control (66360-3-Ig, Clone: K11B8C4B5) (blue). Cells were fixed with 4% PFA and permeabilized with Flow Cytometry Perm Buffer (PF00011-C). This data was developed using the same antibody clone with 66846-1-PBS in a



Immunofluorescent analysis of (-20°C Ethanol) fixed HeLa cells using GLUT4 antibody (66846-1-Ig, Clone: 3G7C9) at dilution of 1:400 and CoraLite®488-Conjugated Goat Anti-Mouse IgG(H+L) (SA00013-1). This data was developed using the same antibody clone with 66846-1-PBS in a different storage buffer formulation.