

For Research Use Only

CPLX2 Monoclonal antibody

Catalog Number: 66849-1-Ig



Basic Information

Catalog Number: 66849-1-Ig	GenBank Accession Number: BC093706	Purification Method: Protein G purification
Size: 150ul , Concentration: 1900 ug/ml by Nanodrop and 1000 ug/ml by Bradford method using BSA as the standard;	GeneID (NCBI): 10814	CloneNo.: 1B2A11
Source: Mouse	UNIPROT ID: Q6PUV4	Recommended Dilutions: WB 1:500-1:3000 IHC 1:250-1:1000
Isotype: IgG1	Full Name: complexin 2	
Immunogen Catalog Number: AG27949	Calculated MW: 134 aa, 15 kDa	
	Observed MW: 18-20 kDa	

Applications

Tested Applications:
WB, IHC, FC (Intra), ELISA

Species Specificity:
human, mouse, rat, pig

Note-IHC: suggested antigen retrieval with TE buffer pH 9.0; (*) Alternatively, antigen retrieval may be performed with citrate buffer pH 6.0

Positive Controls:

WB : mouse brain tissue, mouse cerebellum tissue, rat brain tissue, rat cerebellum tissue

IHC : mouse brain tissue,

Background Information

Complexins are soluble proteins that regulate the activity of soluble N-ethylmaleimide-sensitive factor attachment protein receptor (SNARE) complexes necessary for vesicle fusion. Neuronal specific complexin 1 (CPLX1) has inhibitory and stimulatory effects on exocytosis by clamping trans-SNARE complexes in a pre-fusion state and promoting conformational changes to facilitate membrane fusion following cell stimulation. Complexin2 (CPLX2) is a pre-synaptic protein believed to regulate neurotransmitter release from pre-synaptic terminals, it is downregulated in schizophrenic patients suffering from depression, animal models of depression and neurological disorders such as Huntington's disease in which depression is a major symptom.

Storage

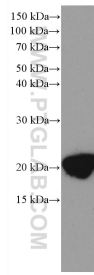
Storage:
Store at -20°C. Stable for one year after shipment.
Storage Buffer:
PBS with 0.02% sodium azide and 50% glycerol pH 7.3.
Aliquoting is unnecessary for -20°C storage

*** 20ul sizes contain 0.1% BSA

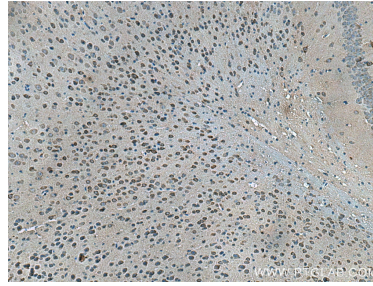
For technical support and original validation data for this product please contact:
T: 1 (888) 4PTGLAB (1-888-478-4522) (toll free in USA), or 1(312) 455-8498 (outside USA)
E: proteintech@ptglab.com
W: ptglab.com

This product is exclusively available under Proteintech Group brand and is not available to purchase from any other manufacturer.

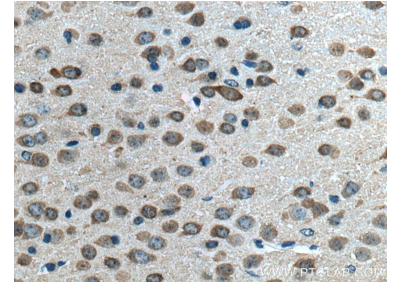
Selected Validation Data



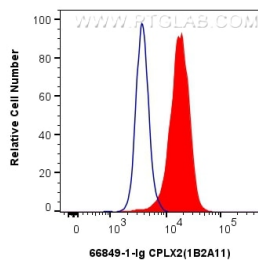
mouse brain tissue were subjected to SDS PAGE followed by western blot with 66849-1-Ig (CPLX2 antibody) at dilution of 1:1500 incubated at room temperature for 1.5 hours.



Immunohistochemical analysis of paraffin-embedded mouse brain tissue slide using 66849-1-Ig (CPLX2 antibody) at dilution of 1:500 (under 10x lens). Heat mediated antigen retrieval with Tris-EDTA buffer (pH 9.0).



Immunohistochemical analysis of paraffin-embedded mouse brain tissue slide using 66849-1-Ig (CPLX2 antibody) at dilution of 1:500 (under 40x lens). Heat mediated antigen retrieval with Tris-EDTA buffer (pH 9.0).



1x10⁶ SH-SY5Y cells were intracellularly stained with 0.4 ug CPLX2 Monoclonal antibody (66849-1-Ig, Clone:1B2A11) and Coralite®488-Conjugated AffiniPure Goat Anti-Mouse IgG(H+L) (SA00013-1) (red), or 0.4 ug Mouse IgG1 isotype control Mouse McAb (66360-1-Ig, Clone: 1F8D3) (blue). Cells were fixed and permeabilized with Transcription Factor Staining Buffer Kit (PF00011).