

For Research Use Only

# KLF5 Monoclonal antibody

Catalog Number: 66850-1-Ig

Featured Product

5 Publications



## Basic Information

Catalog Number:

66850-1-Ig

Size:

150ul, Concentration: 1800 ug/ml by Nanodrop and 833 ug/ml by Bradford method using BSA as the standard;

Source:

Mouse

Isotype:

IgG1

Immunogen Catalog Number:

AG15403

GenBank Accession Number:

BC042131

GeneID (NCBI):

688

UNIPROT ID:

Q13887

Full Name:

Kruppel-like factor 5 (intestinal)

Calculated MW:

457 aa, 51 kDa

Observed MW:

51-57 kDa

Purification Method:

Protein G purification

CloneNo.:

2C11C5

Recommended Dilutions:

WB 1:2000-1:10000

## Applications

Tested Applications:

WB, FC (Intra), ELISA

Cited Applications:

WB, IHC

Species Specificity:

human, mouse

Cited Species:

human

Positive Controls:

WB : HeLa cells, A549 cells, NCI-H1299 cells

## Background Information

KLF5, also known as BTEB2 and IKLF, is a member of the Krueppel-like transcription factor family. It is a transcription factor for SMemb/non-muscle myosin heavy chain-B (NMHC-B). It is a molecular marker of phenotypically modulated smooth-muscle cells. KLF5 seems to be a key element linking external stress and cardiovascular remodeling.

## Notable Publications

| Author         | Pubmed ID | Journal         | Application |
|----------------|-----------|-----------------|-------------|
| Yu Tang        | 39888288  | Adv Sci (Weinh) | WB          |
| Mei Li         | 38815798  | Cancer Lett     | WB          |
| Yongling Kuang | 38609873  | BMC Nephrol     | WB          |

## Storage

Storage:

Store at -20°C. Stable for one year after shipment.

Storage Buffer:

PBS with 0.02% sodium azide and 50% glycerol, pH7.3

Aliquoting is unnecessary for -20°C storage

\*\*\* 20ul sizes contain 0.1% BSA

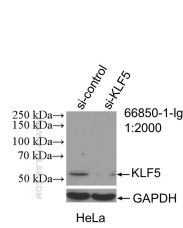
For technical support and original validation data for this product please contact:

T: 1 (888) 4PTGLAB (1-888-478-4522) (toll free in USA), or 1(312) 455-8498 (outside USA)

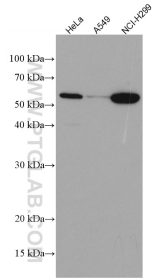
E: proteintech@ptglab.com  
W: ptglab.com

This product is exclusively available under Proteintech Group brand and is not available to purchase from any other manufacturer.

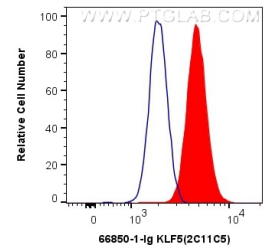
Selected Validation Data



WB result of KLF5 antibody (66850-1-Ig; 1:2000; incubated at room temperature for 1.5 hours) with sh-Control and sh-KLF5 transfected HeLa cells.



Various lysates were subjected to SDS PAGE followed by western blot with 66850-1-Ig (KLF5 antibody) at dilution of 1:2000 incubated at room temperature for 1.5 hours.



1X10<sup>6</sup> HeLa cells were intracellularly stained with 0.5 ug Anti-Human KLF5 (66850-1-Ig, Clone:2C11C5) (red) labeled with FlexAble CoraLite® Plus 555 Antibody Labeling Kit for Mouse IgG1 (KFA022), or 0.5 ug Control Antibody. Cells were fixed and permeabilized with Transcription Factor Staining Buffer Kit (PF00011).