

For Research Use Only

# KLF5 Monoclonal antibody, PBS Only

Catalog Number: 66850-1-PBS

Featured Product



## Basic Information

Catalog Number:

66850-1-PBS

Size:

100ug , Concentration: 1mg/ml by Nanodrop;

Source:

Mouse

Isotype:

IgG1

Immunogen Catalog Number:

AG15403

GenBank Accession Number:

BC042131

GeneID (NCBI):

688

UNIPROT ID:

Q13887

Full Name:

Kruppel-like factor 5 (intestinal)

Calculated MW:

457 aa, 51 kDa

Observed MW:

51-57 kDa

Purification Method:

Protein G purification

CloneNo.:

2C11C5

## Applications

Tested Applications:

Indirect ELISA, WB

Species Specificity:

mouse, human

## Background Information

KLF5, also known as BTEB2 and IKLF, is a member of the Krueppel-like transcription factor family. It is a transcription factor for SMemb/non-muscle myosin heavy chain-B (NMHC-B). It is a molecular marker of phenotypically modulated smooth-muscle cells. KLF5 seems to be a key element linking external stress and cardiovascular remodeling.

## Storage

Storage:

Store at -80°C.

Storage Buffer:

PBS Only

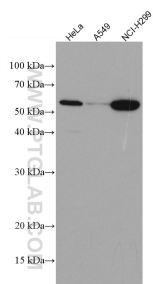
For technical support and original validation data for this product please contact:

T: 1 (888) 4PTGLAB (1-888-478-4522) (toll free in USA), or 1(312) 455-8498 (outside USA)

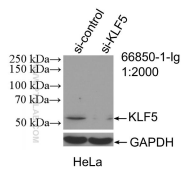
E: [proteintech@ptglab.com](mailto:proteintech@ptglab.com)  
W: [ptglab.com](http://ptglab.com)

This product is exclusively available under Proteintech Group brand and is not available to purchase from any other manufacturer.

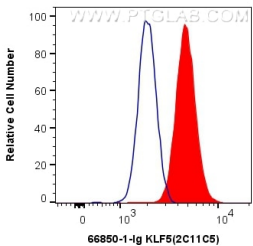
Selected Validation Data



Various lysates were subjected to SDS PAGE followed by western blot with 66850-1-Ig (KLF5 antibody) at dilution of 1:2000 incubated at room temperature for 1.5 hours. This data was developed using the same antibody clone with 66850-1-PBS in a different storage buffer formulation.



WB result of KLF5 antibody (66850-1-Ig; 1:2000; incubated at room temperature for 1.5 hours) with sh-Control and sh-KLF5 transfected HeLa cells. This data was developed using the same antibody clone with 66850-1-PBS in a different storage buffer formulation.



1X10<sup>6</sup> HeLa cells were intracellularly stained with 0.5 ug Anti-Human KLF5 (66850-1-Ig, Clone:2C11C5) (red) labeled with FlexAble CoraLite® Plus 555 Antibody Labeling Kit for Mouse IgG1 (KFA022), or 0.5 ug Control Antibody. Cells were fixed and permeabilized with Transcription Factor Staining Buffer Kit (PF00011). This data was developed using the same antibody clone with 66850-1-PBS in a different storage buffer formulation.