

For Research Use Only

# SMO Monoclonal antibody

Catalog Number: 66851-1-Ig **24 Publications**



## Basic Information

<b>Catalog Number:</b> 66851-1-Ig	<b>GenBank Accession Number:</b> BC009989	<b>Purification Method:</b> Protein A purification
<b>Size:</b> 150ul, Concentration: 2000 µg/ml by Nanodrop and 1000 µg/ml by Bradford method using BSA as the standard;	<b>GeneID (NCBI):</b> 6608	<b>CloneNo.:</b> 2B10A11
<b>Source:</b> Mouse	<b>UNIPROT ID:</b> Q99835	<b>Recommended Dilutions:</b> WB 1:1000-1:8000 IHC 1:1000-1:4000 IF/ICC 1:50-1:500
<b>Isotype:</b> IgG2b	<b>Full Name:</b> smoothened homolog (Drosophila)	
<b>Immunogen Catalog Number:</b> AG25861	<b>Calculated MW:</b> 787 aa, 86 kDa	
	<b>Observed MW:</b> 86 kDa	

## Applications

<b>Tested Applications:</b> WB, IF, IHC, ELISA	<b>Positive Controls:</b> WB : rat brain tissue, mouse brain tissue
<b>Cited Applications:</b> WB, IHC, IF	<b>IHC :</b> human prostate cancer tissue,
<b>Species Specificity:</b> Human, Canine, Mouse, Rat	<b>IF/ICC :</b> MDCK cells,
<b>Cited Species:</b> human, mouse, rat	
<b>Note-IHC: suggested antigen retrieval with TE buffer pH 9.0; (*) Alternatively, antigen retrieval may be performed with citrate buffer pH 6.0</b>	

## Background Information

Smoothened (SMO) is a G protein-coupled receptor that is a component of the hedgehog (Hh) signaling pathway and is conserved from flies to humans. The Hh pathway plays central roles in animal development and stem-cell function. Defects in Hh signalling lead to birth defects and cancer in humans. Expressed on the primary cilium, SMO interacts with the patched protein, a receptor for Hh proteins.

## Notable Publications

Author	Pubmed ID	Journal	Application
Mengjie Li	34592340	J Ethnopharmacol	WB
Ana Martin-Hurtado	31554934	Sci Rep	WB
Jiawei Li	34746145	Front Cell Dev Biol	WB

## Storage

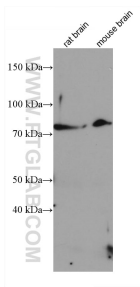
**Storage:**  
Store at -20°C. Stable for one year after shipment.  
**Storage Buffer:**  
PBS with 0.02% sodium azide and 50% glycerol pH 7.3.  
Aliquoting is unnecessary for -20°C storage

\*\*\* 20ul sizes contain 0.1% BSA

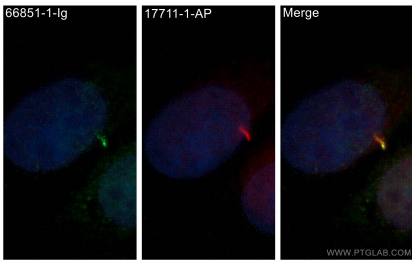
For technical support and original validation data for this product please contact:  
T: 1 (888) 4PTGLAB (1-888-478-4522) (toll free in USA), or 1(312) 455-8498 (outside USA)  
E: proteintech@ptglab.com  
W: ptglab.com

This product is exclusively available under Proteintech Group brand and is not available to purchase from any other manufacturer.

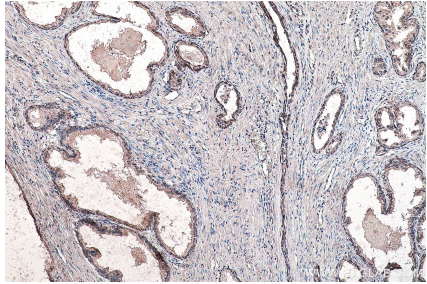
# Selected Validation Data



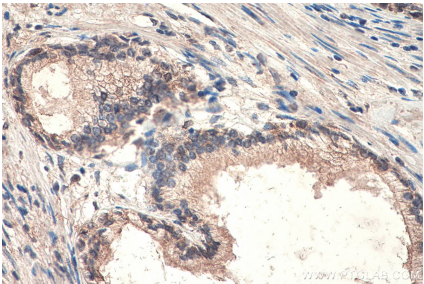
Various lysates were subjected to SDS PAGE followed by western blot with 66851-1-Ig (SMO antibody) at dilution of 1:4000 incubated at room temperature for 1.5 hours.



Immunofluorescent analysis of (4% PFA) fixed MDCK cells using 66851-1-Ig (SMO antibody) at dilution of 1:100 and Alexa Fluor 488-Conjugated Goat Anti-Mouse IgG(H+L).



Immunohistochemical analysis of paraffin-embedded human prostate cancer tissue slide using 66851-1-Ig (SMO antibody) at dilution of 1:2000 (under 10x lens). Heat mediated antigen retrieval with Tris-EDTA buffer (pH 9.0).



Immunohistochemical analysis of paraffin-embedded human prostate cancer tissue slide using 66851-1-Ig (SMO antibody) at dilution of 1:2000 (under 40x lens). Heat mediated antigen retrieval with Tris-EDTA buffer (pH 9.0).