

For Research Use Only

# SMO Monoclonal antibody

Catalog Number: 66851-2-Ig



## Basic Information

<b>Catalog Number:</b> 66851-2-Ig	<b>GenBank Accession Number:</b> BC009989	<b>Purification Method:</b> Protein G purification
<b>Size:</b> 150ul , Concentration: 1000 µg/ml by Nanodrop and 1100 µg/ml by Bradford method using BSA as the standard;	<b>GeneID (NCBI):</b> 6608	<b>CloneNo.:</b> 2A11A10
<b>Source:</b> Mouse	<b>Full Name:</b> smoothened homolog (Drosophila)	<b>Recommended Dilutions:</b> IF 1:400-1:1600
<b>Isotype:</b> IgG1	<b>Calculated MW:</b> 787 aa, 86 kDa	
<b>Immunogen Catalog Number:</b> AG25861		

## Applications

<b>Tested Applications:</b> IF, ELISA	<b>Positive Controls:</b> IF : MDCK cells,
<b>Species Specificity:</b> Human, Canine	

## Background Information

Smoothened (SMO) is a G protein-coupled receptor that is a component of the hedgehog (Hh) signaling pathway and is conserved from flies to humans. The Hh pathway plays central roles in animal development and stem-cell function. Defects in Hh signalling lead to birth defects and cancer in humans. Expressed on the primary cilium, SMO interacts with the patched protein, a receptor for Hh proteins.

## Storage

**Storage:**  
Store at -20°C. Stable for one year after shipment.  
**Storage Buffer:**  
PBS with 0.02% sodium azide and 50% glycerol pH 7.3.  
Aliquoting is unnecessary for -20°C storage

\*\*\* 20ul sizes contain 0.1% BSA

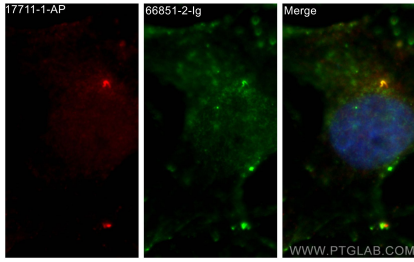
For technical support and original validation data for this product please contact:

T: 1 (888) 4PTGLAB (1-888-478-4522) (toll free  
in USA), or 1(312) 455-8498 (outside USA)

E: [proteintech@ptglab.com](mailto:proteintech@ptglab.com)  
W: [ptglab.com](http://ptglab.com)

This product is exclusively available under Proteintech Group brand and is not available to purchase from any other manufacturer.

## Selected Validation Data



Immunofluorescent analysis of (4% PFA) fixed MDCK cells using SMO antibody (66851-2-Ig, Clone: 2A11A10) at dilution of 1:800 and CoraLite®488-Conjugated AffiniPure Goat Anti-Mouse IgG(H+L), ARL13B antibody (17711-1-AP, red).