

For Research Use Only

# ANXA10 Monoclonal antibody, PBS Only (Detector)

Catalog Number: 66869-5-PBS



## Basic Information

<b>Catalog Number:</b> 66869-5-PBS	<b>GenBank Accession Number:</b> BC007320	<b>Purification Method:</b> Protein G purification
<b>Size:</b> 100ug , Concentration: 1 mg/ml by Nanodrop;	<b>GeneID (NCBI):</b> 11199	<b>CloneNo.:</b> 1D2A8
<b>Source:</b> Mouse	<b>UNIPROT ID:</b> Q9UJ72	
<b>Isotype:</b> IgG1	<b>Full Name:</b> annexin A10	
<b>Immunogen Catalog Number:</b> AG27098	<b>Calculated MW:</b> 37 kDa	

## Applications

**Tested Applications:**  
Cytometric bead array, Indirect ELISA, Sample test

**Species Specificity:**  
human

## Product Information

66869-5-PBS targets ANXA10 as part of a matched antibody pair:

MP51324-2: 66869-4-PBS capture and 66869-5-PBS detection (validated in Cytometric bead array)

Unconjugated mouse monoclonal antibody pair in PBS only (BSA and azide free) storage buffer at a concentration of 1 mg/mL, ready for conjugation.

This conjugation ready format makes antibodies ideal for use in many applications including: ELISAs, multiplex assays requiring matched pairs, mass cytometry, and multiplex imaging applications. Antibody use should be optimized by the end user for each application and assay.

## Storage

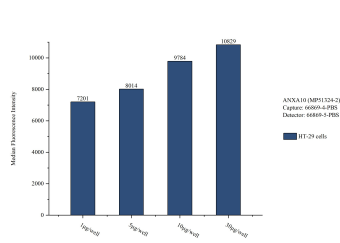
**Storage:**  
Store at -80°C.

**Storage Buffer:**  
PBS only, pH7.3

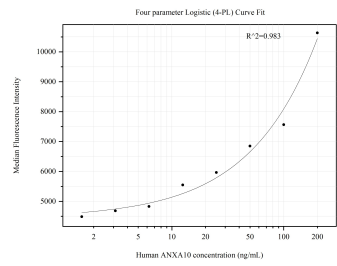
For technical support and original validation data for this product please contact:  
T: 1 (888) 4PTGLAB (1-888-478-4522) (toll free in USA), or 1(312) 455-8498 (outside USA)  
E: [proteintech@ptglab.com](mailto:proteintech@ptglab.com)  
W: [ptglab.com](http://ptglab.com)

This product is exclusively available under Proteintech Group brand and is not available to purchase from any other manufacturer.

# Selected Validation Data



Sample test of MP51324-2, ANXA10 Monoclonal Matched Antibody Pair, PBS Only. Capture antibody: 66869-4-PBS. Detection antibody: 66869-5-PBS.



Cytometric bead array standard curve of MP51324-2, ANXA10 Monoclonal Matched Antibody Pair, PBS Only. Capture antibody: 66869-4-PBS. Detection antibody: 66869-5-PBS. Standard:Ag27098. Range: 1.563-200 ng/mL.