

KPNA2 Monoclonal antibody

Catalog Number: 66870-1-Ig

Basic Information

Catalog Number: 66870-1-Ig	GenBank Accession Number: BC005978	Purification Method: Protein A purification
Size: 150ul, Concentration: 1700 ug/ml by Nanodrop and 1000 ug/ml by Bradford method using BSA as the standard;	GeneID (NCBI): 3838	CloneNo.: 2G9C1
Source: Mouse	UNIPROT ID: P52292	Recommended Dilutions: WB 1:1000-1:5000 IHC 1:300-1:1200 IF/ICC 1:400-1:1600
Isotype: IgG1	Full Name: karyopherin alpha 2 (RAG cohort 1, importin alpha 1)	
Immunogen Catalog Number: AG28386	Calculated MW: 57.8 kDa	
	Observed MW: 55-58 kDa	

Applications

Tested Applications: WB, IHC, IF/ICC, ELISA	Positive Controls:
Species Specificity: human	WB : HeLa cells, HEK-293 cells, MCF-7 cells, Jurkat cells, Raji cells
Note-IHC: suggested antigen retrieval with TE buffer pH 9.0; (*) Alternatively, antigen retrieval may be performed with citrate buffer pH 6.0	IHC : human skin cancer tissue,
	IF/ICC : MCF-7 cells,

Background Information

KPNA2 (karyopherin $\alpha 2$) is a nuclear import factor involved in the nucleocytoplasmic transport system. It is functionally involved in the tumor progression and is elevated in multiple cancers. KPNA2 expression may be a useful prognostic biomarker to monitor cancer prognosis.

Storage

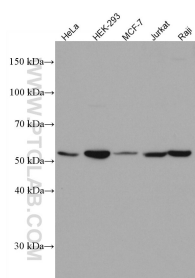
Storage:
Store at -20°C. Stable for one year after shipment.
Storage Buffer:
PBS with 0.02% sodium azide and 50% glycerol pH 7.3.
Aliquoting is unnecessary for -20°C storage

*** 20ul sizes contain 0.1% BSA

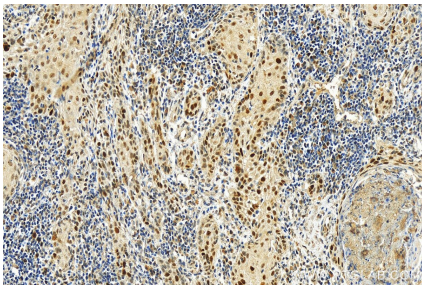
For technical support and original validation data for this product please contact:
T: 1 (888) 4PTGLAB (1-888-478-4522) (toll free in USA), or 1(312) 455-8498 (outside USA)
E: proteintech@ptglab.com
W: ptglab.com

This product is exclusively available under Proteintech Group brand and is not available to purchase from any other manufacturer.

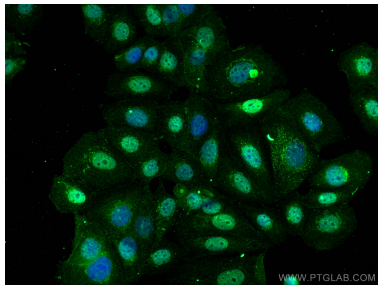
Selected Validation Data



Various lysates were subjected to SDS PAGE followed by western blot with 66870-1-Ig (KPNA2 antibody) at dilution of 1:3000 incubated at room temperature for 1.5 hours.



Immunohistochemical analysis of paraffin-embedded skin cancer slide using 66870-1-Ig (KPNA2 antibody) at dilution of 1:600 (under 20x lens). Heat mediated antigen retrieval with Tris-EDTA buffer (pH 9.0).



Immunofluorescent analysis of (4% PFA) fixed MCF-7 cells using KPNA2 antibody (66870-1-Ig, Clone: 2G9C1) at dilution of 1:800 and Coralite®488-Conjugated AffiniPure Goat Anti-Mouse IgG(H+L).