

For Research Use Only

KPNA2 Monoclonal antibody, PBS Only

Catalog Number: 66870-1-PBS



Basic Information

Catalog Number:

66870-1-PBS

Size:

100ug, Concentration: 1mg/ml by Nanodrop;

Source:

Mouse

Isotype:

IgG1

Immunogen Catalog Number:

AG28386

GenBank Accession Number:

BC005978

GeneID (NCBI):

3838

UNIPROT ID:

P52292

Full Name:

karyopherin alpha 2 (RAG cohort 1, importin alpha 1)

Calculated MW:

57.8 kDa

Observed MW:

55-58 kDa

Purification Method:

Protein A purification

CloneNo.:

2G9C1

Applications

Tested Applications:

WB, IHC, IF/ICC, Indirect ELISA

Species Specificity:

human

Background Information

KPNA2 (karyopherin $\alpha 2$) is a nuclear import factor involved in the nucleocytoplasmic transport system. It is functionally involved in the tumor progression and is elevated in multiple cancers. KPNA2 expression may be a useful prognostic biomarker to monitor cancer prognosis.

Storage

Storage:

Store at -80°C.

Storage Buffer:

PBS Only

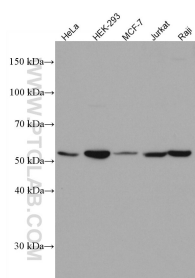
For technical support and original validation data for this product please contact:

T: 1 (888) 4PTGLAB (1-888-478-4522) (toll free in USA), or 1(312) 455-8498 (outside USA)

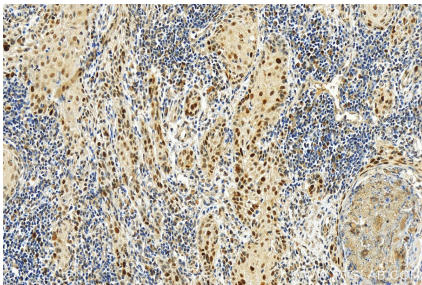
E: proteintech@ptglab.com
W: ptglab.com

This product is exclusively available under Proteintech Group brand and is not available to purchase from any other manufacturer.

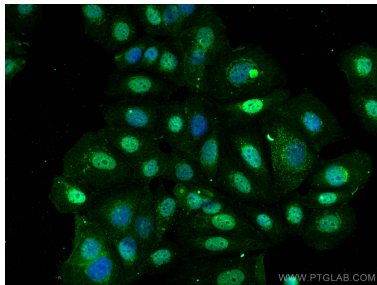
Selected Validation Data



Various lysates were subjected to SDS PAGE followed by western blot with 66870-1-Ig (KPNA2 antibody) at dilution of 1:3000 incubated at room temperature for 1.5 hours. This data was developed using the same antibody clone with 66870-1-PBS in a different storage buffer formulation.



Immunohistochemical analysis of paraffin-embedded skin cancer slide using 66870-1-Ig (KPNA2 antibody) at dilution of 1:600 (under 20x lens). Heat mediated antigen retrieval with Tris-EDTA buffer (pH 9.0). This data was developed using the same antibody clone with 66870-1-PBS in a different storage buffer formulation.



Immunofluorescent analysis of (4% PFA) fixed MCF-7 cells using KPNA2 antibody (66870-1-Ig, Clone: 2G9C1) at dilution of 1:800 and Coralite®488-Conjugated AffiniPure Goat Anti-Mouse IgG(H+L). This data was developed using the same antibody clone with 66870-1-PBS in a different storage buffer formulation.