

For Research Use Only

# SREBF1 Monoclonal antibody

Catalog Number: 66875-1-Ig

Featured Product

55 Publications



## Basic Information

Catalog Number:

66875-1-Ig

Size:

150ul, Concentration: 2000 ug/ml by Nanodrop;

Source:

Mouse

Isotype:

IgG1

Immunogen Catalog Number:

AG5484

GenBank Accession Number:

BC063281

GeneID (NCBI):

6720

UNIPROT ID:

P36956

Full Name:

sterol regulatory element binding transcription factor 1

Calculated MW:

1177 aa, 125 kDa

Observed MW:

125 kDa

Purification Method:

Protein G purification

CloneNo.:

1B6G5

Recommended Dilutions:

WB 1:2000-1:16000

IHC 1:50-1:500

IF/ICC 1:200-1:800

## Applications

Tested Applications:

WB, IHC, IF/ICC, ELISA

Cited Applications:

WB, IHC, IF, IP

Species Specificity:

human

Cited Species:

human, bovine

**Note-IHC: suggested antigen retrieval with TE buffer pH 9.0; (\*) Alternatively, antigen retrieval may be performed with citrate buffer pH 6.0**

Positive Controls:

WB : MCF-7 cells, HeLa cells, Jurkat cells, HT-29 cells, L02 cells, A549 cells, MOLT-4 cells

IHC : human kidney tissue,

IF/ICC : HepG2 cells,

## Background Information

SREBF1, also named as BHLHD1 and SREBP1, contains one basic helix-loop-helix (bHLH) domain and belongs to the SREBP family. It is a transcriptional activator required for lipid homeostasis. The SREBPs are synthesized as precursors anchored to endoplasmic reticulum (ER) membranes and complexed with SCAP. When the cellular cholesterol level is low, SREBP-SCAP complexes move to the Golgi apparatus, where SREBPs undergo a two-step proteolytic processing, leading to the release of the mature form, an N-terminal fragment, i.e., basic helix-loop-helix leucine zipper transcription factor. These factors enter the nucleus where they bind to sterol regulatory elements (SRE) in the promoter regions of a number of genes whose products mediate the synthesis of cholesterol and fatty acids. [PMID: 21698267]. This antibody can recognize the 125kd precursor form and the 68kd mature form of human SREBF1.

## Notable Publications

Author	Pubmed ID	Journal	Application
Chang Wang	33013689	Front Endocrinol (Lausanne)	WB
Zhen Zhen	31475773	Cell Biol Int	WB
Xiao Gu	36206922	Reprod Toxicol	WB

## Storage

Storage:

Store at -20°C. Stable for one year after shipment.

Storage Buffer:

PBS with 0.02% sodium azide and 50% glycerol, pH7.3

Aliquoting is unnecessary for -20°C storage

\*\*\* 20ul sizes contain 0.1% BSA

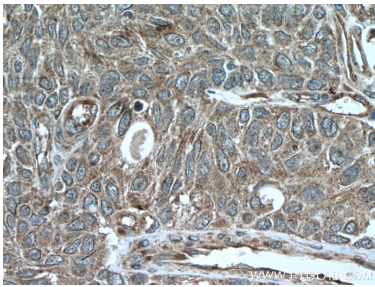
For technical support and original validation data for this product please contact:

T: 1 (888) 4PTGLAB (1-888-478-4522) (toll free in USA), or 1(312) 455-8498 (outside USA)

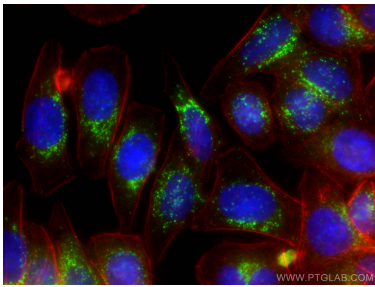
E: proteintech@ptglab.com  
W: ptglab.com

This product is exclusively available under Proteintech Group brand and is not available to purchase from any other manufacturer.

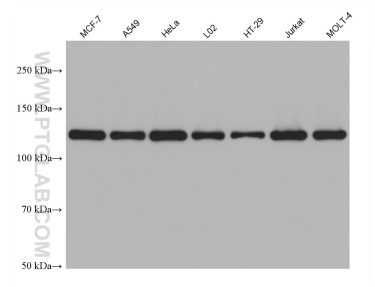
Selected Validation Data



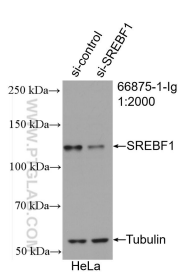
Immunohistochemical analysis of paraffin-embedded human kidney tissue slide using 66875-1-Ig (SREBF1 antibody) at dilution of 1:200 (under 40x lens). Heat mediated antigen retrieval with Tris-EDTA buffer (pH 9.0).



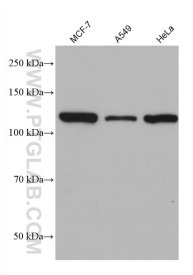
Immunofluorescent analysis of (-20°C Ethanol) fixed HepG2 cells using SREBF1 antibody (66875-1-Ig, Clone: 1B6G5 ) at dilution of 1:400 and CoraLite®488-Conjugated AffiniPure Goat Anti-Mouse IgG(H+L). CL594-Phalloidin stains the F-actin (red). DAPI (blue).



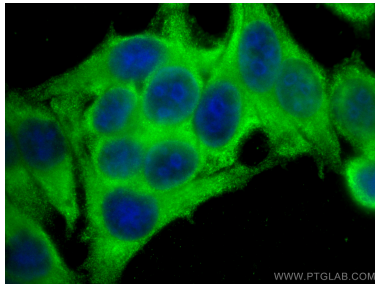
Various lysates were subjected to SDS PAGE followed by western blot with 66875-1-Ig (SREBF1 antibody) at dilution of 1:8000 incubated at room temperature for 1.5 hours.



WB result of SREBF1 antibody (66875-1-Ig; 1:2000; incubated at room temperature for 1.5 hours) with sh-Control and sh-SREBF1 transfected HeLa cells.



Various lysates were subjected to SDS PAGE followed by western blot with 66875-1-Ig (SREBF1 antibody) at dilution of 1:8000 incubated at room temperature for 1.5 hours.



Immunofluorescent analysis of (-20°C Ethanol) fixed HepG2 cells using SREBF1 antibody (66875-1-Ig, Clone: 1B6G5 ) at dilution of 1:400 and Multi-rAb CoraLite® Plus 488-Goat Anti-Mouse Recombinant Secondary Antibody (H+L) (RGAM002).