

For Research Use Only

SREBF1 Monoclonal antibody

Catalog Number: 66875-1-Ig

Featured Product

53 Publications



Basic Information

Catalog Number:

66875-1-Ig

Size:

150ul, Concentration: 2000 ug/ml by Nanodrop;

Source:

Mouse

Isotype:

IgG1

Immunogen Catalog Number:

AG5484

GenBank Accession Number:

BC063281

GeneID (NCBI):

6720

UNIPROT ID:

P36956

Full Name:

sterol regulatory element binding transcription factor 1

Calculated MW:

1177 aa, 125 kDa

Observed MW:

125 kDa

Purification Method:

Protein G purification

CloneNo.:

1B6G5

Recommended Dilutions:

WB 1:2000-1:16000

IHC 1:50-1:500

IF/ICC 1:200-1:800

Applications

Tested Applications:

WB, IHC, IF/ICC, ELISA

Cited Applications:

WB, IHC, IF, IP

Species Specificity:

human

Cited Species:

human, bovine

Note-IHC: suggested antigen retrieval with TE buffer pH 9.0; (*) Alternatively, antigen retrieval may be performed with citrate buffer pH 6.0

Positive Controls:

WB : MCF-7 cells, HeLa cells, Jurkat cells, HT-29 cells, L02 cells, A549 cells, MOLT-4 cells

IHC : human kidney tissue,

IF/ICC : HepG2 cells,

Background Information

SREBF1, also named as BHLHD1 and SREBP1, contains one basic helix-loop-helix (bHLH) domain and belongs to the SREBP family. It is a transcriptional activator required for lipid homeostasis. The SREBPs are synthesized as precursors anchored to endoplasmic reticulum (ER) membranes and complexed with SCAP. When the cellular cholesterol level is low, SREBP-SCAP complexes move to the Golgi apparatus, where SREBPs undergo a two-step proteolytic processing, leading to the release of the mature form, an N-terminal fragment, i.e., basic helix-loop-helix leucine zipper transcription factor. These factors enter the nucleus where they bind to sterol regulatory elements (SRE) in the promoter regions of a number of genes whose products mediate the synthesis of cholesterol and fatty acids. [PMID: 21698267]. This antibody can recognize the 125kd precursor form and the 68kd mature form of human SREBF1.

Notable Publications

Author	Pubmed ID	Journal	Application
Chang Wang	33013689	Front Endocrinol (Lausanne)	WB
Zhen Zhen	31475773	Cell Biol Int	WB
Xiao Gu	36206922	Reprod Toxicol	WB

Storage

Storage:

Store at -20°C. Stable for one year after shipment.

Storage Buffer:

PBS with 0.02% sodium azide and 50% glycerol pH 7.3.

Aliquoting is unnecessary for -20°C storage

*** 20ul sizes contain 0.1% BSA

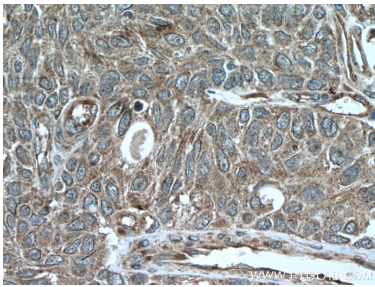
For technical support and original validation data for this product please contact:

T: 1 (888) 4PTGLAB (1-888-478-4522) (toll free in USA), or 1(312) 455-8498 (outside USA)

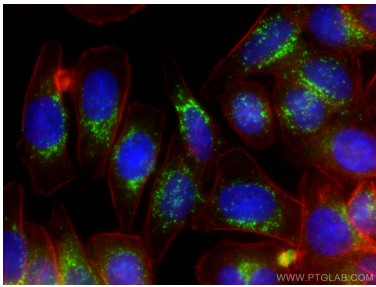
E: proteintech@ptglab.com
W: ptglab.com

This product is exclusively available under Proteintech Group brand and is not available to purchase from any other manufacturer.

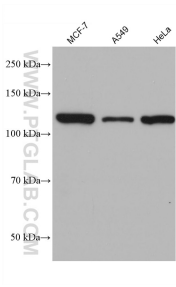
Selected Validation Data



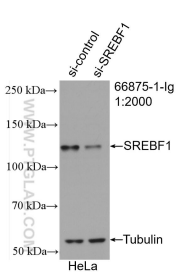
Immunohistochemical analysis of paraffin-embedded human kidney tissue slide using 66875-1-Ig (SREBF1 antibody) at dilution of 1:200 (under 40x lens). Heat mediated antigen retrieval with Tris-EDTA buffer (pH 9.0).



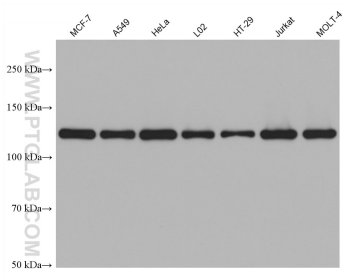
Immunofluorescent analysis of (-20°C Ethanol) fixed HepG2 cells using SREBF1 antibody (66875-1-Ig, Clone: 1B6G5) at dilution of 1:400 and CoraLite®488-Conjugated AffiniPure Goat Anti-Mouse IgG(H+L). CL594-Phalloidin stains the F-actin (red). DAPI (blue).



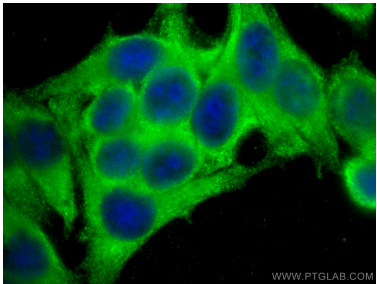
Various lysates were subjected to SDS PAGE followed by western blot with 66875-1-Ig (SREBF1 antibody) at dilution of 1:8000 incubated at room temperature for 1.5 hours.



WB result of SREBF1 antibody (66875-1-Ig; 1:2000; incubated at room temperature for 1.5 hours) with sh-Control and sh-SREBF1 transfected HeLa cells.



Various lysates were subjected to SDS PAGE followed by western blot with 66875-1-Ig (SREBF1 antibody) at dilution of 1:8000 incubated at room temperature for 1.5 hours.



Immunofluorescent analysis of (-20°C Ethanol) fixed HepG2 cells using SREBF1 antibody (66875-1-Ig, Clone: 1B6G5) at dilution of 1:400 and Multi-rAb CoraLite ® Plus 488-Goat Anti-Mouse Recombinant Secondary Antibody (H+L) (RGAM002).