

For Research Use Only

STIL Monoclonal antibody

Catalog Number: 66876-1-Ig

Featured Product

4 Publications



Basic Information

Catalog Number:

66876-1-Ig

Size:

150ul, Concentration: 2951 ug/ml by 6491 Nanodrop and 1000 ug/ml by Bradford method using BSA as the standard;

Source:

Mouse

Isotype:

IgG1

Immunogen Catalog Number:

AG19124

GenBank Accession Number:

BC126223

GeneID (NCBI):

6491

UNIPROT ID:

Q15468

Full Name:

SCL/TAL1 interrupting locus

Calculated MW:

1287 aa, 143 kDa

Observed MW:

150-155 kDa

Purification Method:

Protein G purification

CloneNo.:

1E12C1

Recommended Dilutions:

WB 1:1000-1:4000

IHC 1:250-1:1000

IF/ICC 1:400-1:1600

Applications

Tested Applications:

WB, IHC, IF/ICC, ELISA

Cited Applications:

WB, IHC, IF

Species Specificity:

human

Cited Species:

human

Note-IHC: suggested antigen retrieval with TE buffer pH 9.0; (*) Alternatively, antigen retrieval may be performed with citrate buffer pH 6.0

Positive Controls:

WB : HeLa cells, Jurkat cells, K-562 cells, HL-60 cells, Daudi cells

IHC : human colon cancer tissue, human lung cancer tissue

IF/ICC : Jurkat cells, A431 cells

Notable Publications

Author	Pubmed ID	Journal	Application
Shu-Fan Ji	33858425	Cancer Cell Int	WB
Tianning Wang	38280197	Cell Rep	IF
Pei Qu	38009273	J Cell Physiol	WB

Storage

Storage:

Store at -20°C. Stable for one year after shipment.

Storage Buffer:

PBS with 0.02% sodium azide and 50% glycerol pH 7.3.

Aliquoting is unnecessary for -20°C storage

*** 20ul sizes contain 0.1% BSA

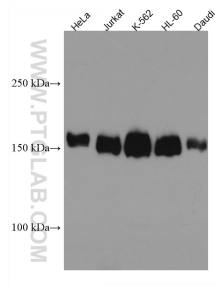
For technical support and original validation data for this product please contact:

T: 1 (888) 4PTGLAB (1-888-478-4522) (toll free in USA), or 1(312) 455-8498 (outside USA)

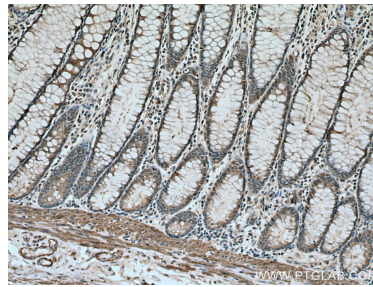
E: proteintech@ptglab.com
W: ptglab.com

This product is exclusively available under Proteintech Group brand and is not available to purchase from any other manufacturer.

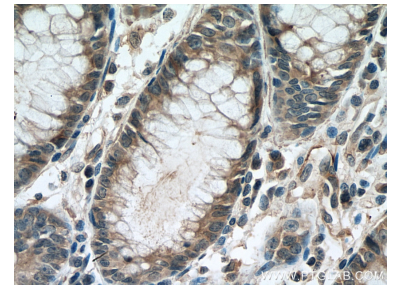
Selected Validation Data



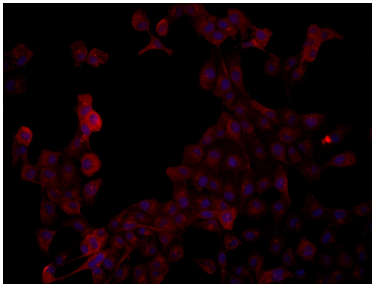
Various lysates were subjected to SDS PAGE followed by western blot with 66876-1-Ig (STIL antibody) at dilution of 1:2000 incubated at room temperature for 1.5 hours.



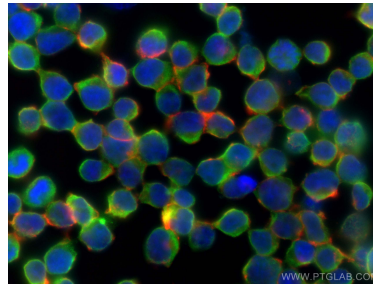
Immunohistochemical analysis of paraffin-embedded human colon cancer tissue slide using 66876-1-Ig (STIL antibody) at dilution of 1:500 (under 10x lens). Heat mediated antigen retrieval with Tris-EDTA buffer (pH 9.0).



Immunohistochemical analysis of paraffin-embedded human colon cancer tissue slide using 66876-1-Ig (STIL antibody) at dilution of 1:500 (under 40x lens). Heat mediated antigen retrieval with Tris-EDTA buffer (pH 9.0).



Immunofluorescent analysis of (4% PFA) fixed A431 cells using STIL antibody (66876-1-Ig, Clone: 1E12C1) at dilution of 1:1000 and Multi-rAb CoraLite® Plus 594-Goat Anti-Mouse Recombinant Secondary Antibody (H+L) (Cat.NO. RGAM004).



Immunofluorescent analysis of (4% PFA) fixed Jurkat cells using STIL antibody (66876-1-Ig, Clone: 1E12C1) at dilution of 1:800 and CoraLite® Plus 594-Goat Anti-Mouse Recombinant Secondary Antibody (H+L) (Cat.NO. RGAM004).