

For Research Use Only

GRB2 Monoclonal antibody

Catalog Number: 66880-1-Ig

Featured Product

2 Publications



Basic Information

Catalog Number:

66880-1-Ig

Size:

150ul, Concentration: 2500 ug/ml by Nanodrop and 1000 ug/ml by Bradford method using BSA as the standard;

Source:

Mouse

Isotype:

IgG1

Immunogen Catalog Number:

AG0395

GenBank Accession Number:

BC000631

GeneID (NCBI):

2885

UNIPROT ID:

P62993

Full Name:

growth factor receptor-bound protein

2

Calculated MW:

25 kDa

Observed MW:

25 kDa

Purification Method:

Protein A purification

CloneNo.:

1C5D11

Recommended Dilutions:

WB 1:5000-1:50000

IHC 1:250-1:1000

Applications

Tested Applications:

WB, IHC, ELISA

Cited Applications:

WB

Species Specificity:

Human, Mouse, Rat

Cited Species:

human, rat

Note-IHC: suggested antigen retrieval with TE buffer pH 9.0; (*) Alternatively, antigen retrieval may be performed with citrate buffer pH 6.0

Positive Controls:

WB : HL-60 cells, HEK-293 cells, HeLa cells, HepG2 cells, Jurkat cells, HSC-T6 cells, PC-12 cells, NIH/3T3 cells, Raji cells, Daudi cells, Ramos cells, Karpas-422 cells, Karpas-299 cells, MOLT-4 cells

IHC : human pancreas cancer tissue,

Background Information

GRB2 (growth factor receptor-bound protein 2) binds the epidermal growth factor receptor and contains one SH2 domain and two SH3 domains. Two alternatively spliced transcript variants encoding different isoforms have been found for this gene. N-SH3 domain of Grb2 was involved in the protein vesicular localization including amyloid- β protein precursor (A β PP). Involvement of GRB2 in Ras-signaling pathway has been reported, recent finding show that GRB2 may also play a complex role in T and B-cell antigen receptor signaling.

Notable Publications

Author	Pubmed ID	Journal	Application
Xiaoqin Yu	32652777	FASEB J	WB
Qiwei Jiang	37294756	Sci Adv	WB

Storage

Storage:

Store at -20°C. Stable for one year after shipment.

Storage Buffer:

PBS with 0.02% sodium azide and 50% glycerol pH 7.3.

Aliquoting is unnecessary for -20°C storage

*** 20ul sizes contain 0.1% BSA

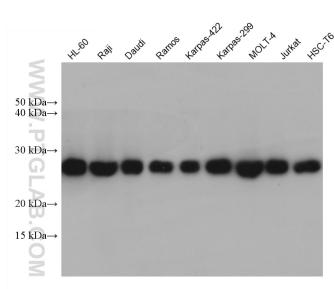
For technical support and original validation data for this product please contact:

T: 1 (888) 4PTGLAB (1-888-478-4522) (toll free in USA), or 1(312) 455-8498 (outside USA)

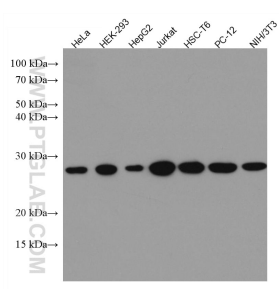
E: proteintech@ptglab.com
W: ptglab.com

This product is exclusively available under Proteintech Group brand and is not available to purchase from any other manufacturer.

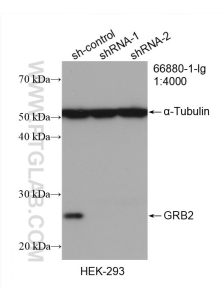
Selected Validation Data



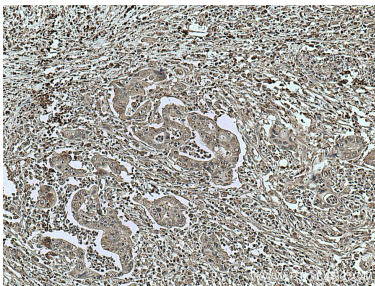
Various lysates were subjected to SDS PAGE followed by western blot with 66880-1-Ig (GRB2 antibody) at dilution of 1:10000 incubated at room temperature for 1.5 hours.



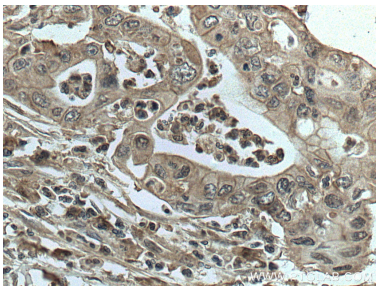
Various lysates were subjected to SDS PAGE followed by western blot with 66880-1-Ig (GRB2 antibody) at dilution of 1:5000 incubated at room temperature for 1.5 hours.



WB result of GRB2 antibody (66880-1-Ig; 1:4000; incubated at room temperature for 1.5 hours) with sh-Control and sh-GRB2 transfected HEK-293 cells.



Immunohistochemical analysis of paraffin-embedded human pancreas cancer tissue slide using 66880-1-Ig (GRB2 antibody) at dilution of 1:500 (under 10x lens. Heat mediated antigen retrieval with Tris-EDTA buffer (pH 9.0).



Immunohistochemical analysis of paraffin-embedded human pancreas cancer tissue slide using 66880-1-Ig (GRB2 antibody) at dilution of 1:500 (under 40x lens. Heat mediated antigen retrieval with Tris-EDTA buffer (pH 9.0).