

For Research Use Only

SERPING1/C1 Inactivator Monoclonal antibody

Catalog Number: 66882-1-Ig

Featured Product

1 Publications



Basic Information

Catalog Number:

66882-1-Ig

Size:

150ul, Concentration: 1504 ug/ml by 710 Nanodrop and 1000 ug/ml by Bradford method using BSA as the standard;

Source:

Mouse

Isotype:

IgG2a

Immunogen Catalog Number:

AG16782

GenBank Accession Number:

BC011171

GeneID (NCBI):

710

UNIPROT ID:

P05155

Full Name:

serpin peptidase inhibitor, clade G (C1 inhibitor), member 1

Calculated MW:

500 aa, 55 kDa

Observed MW:

100 kDa

Purification Method:

Protein A purification

CloneNo.:

1B11B11

Recommended Dilutions:

WB 1:2000-1:8000

IF/ICC 1:400-1:1600

Applications

Tested Applications:

WB, IF/ICC, ELISA

Cited Applications:

WB

Species Specificity:

Human, pig, rat

Cited Species:

human

Positive Controls:

WB : human plasma tissue, human plasma, pig plasma, rat serum

IF/ICC : HeLa cells, HepG2 cells

Background Information

SERPING1, also known as C1 Inhibitor (C1INH), is a member of the Serine proteinase inhibitor family. Its main function is the inhibition of the complement system to prevent spontaneous activation. It inhibits activated C1r and C1s of the first complement component and thus regulates complement activation. Deficiency of this protein is associated with hereditary angioneurotic oedema (HANE). C1INH is the most heavily glycosylated plasma protein.

Notable Publications

Author	Pubmed ID	Journal	Application
Simin Yao	37456855	iScience	WB

Storage

Storage:

Store at -20°C. Stable for one year after shipment.

Storage Buffer:

PBS with 0.02% sodium azide and 50% glycerol pH 7.3.

Aliquoting is unnecessary for -20°C storage

*** 20ul sizes contain 0.1% BSA

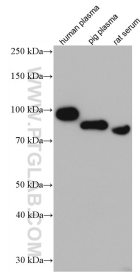
For technical support and original validation data for this product please contact:

T: 1 (888) 4PTGLAB (1-888-478-4522) (toll free in USA), or 1(312) 455-8498 (outside USA)

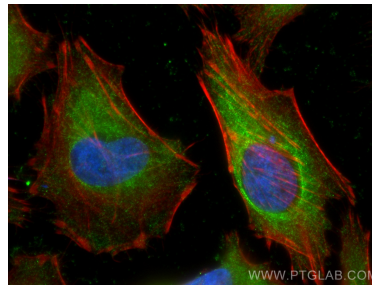
E: proteintech@ptglab.com
W: ptglab.com

This product is exclusively available under Proteintech Group brand and is not available to purchase from any other manufacturer.

Selected Validation Data



Various lysates were subjected to SDS PAGE followed by western blot with 66882-1-Ig (SERPING1 antibody) at dilution of 1:5000 incubated at room temperature for 1.5 hours.



Immunofluorescent analysis of (-20°C Ethanol) fixed HeLa cells using SERPING1/C1 Inactivator antibody (66882-1-Ig, Clone: 1B11B11) at dilution of 1:800 and CoraLite@488-Conjugated Goat Anti-Mouse IgG(H+L), CL594-Phalloidin (red).