

For Research Use Only

# SERPING1/C1 Inactivator Monoclonal antibody, PBS Only



Catalog Number: 66882-1-PBS

Featured Product

## Basic Information

Catalog Number:

66882-1-PBS

Size:

100ug, Concentration: 1 mg/ml by Nanodrop;

Source:

Mouse

Isotype:

IgG2a

Immunogen Catalog Number:

AG16782

GenBank Accession Number:

BC011171

GeneID (NCBI):

710

UNIPROT ID:

P05155

Full Name:

serpin peptidase inhibitor, clade G (C1 inhibitor), member 1

Calculated MW:

500 aa, 55 kDa

Observed MW:

100 kDa

Purification Method:

Protein A purification

CloneNo.:

1B11B11

## Applications

Tested Applications:

WB, IF, Indirect ELISA

Species Specificity:

Human, pig, rat

## Background Information

SERPING1, also known as C1 Inhibitor (C1INH), is a member of the Serine proteinase inhibitor family. Its main function is the inhibition of the complement system to prevent spontaneous activation. It inhibits activated C1r and C1s of the first complement component and thus regulates complement activation. Deficiency of this protein is associated with hereditary angioneurotic oedema (HANE). C1INH is the most heavily glycosylated plasma protein.

## Storage

Storage:

Store at -80°C.

Storage Buffer:

PBS Only

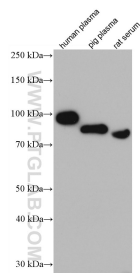
For technical support and original validation data for this product please contact:

T: 1 (888) 4PTGLAB (1-888-478-4522) (toll free in USA), or 1(312) 455-8498 (outside USA)

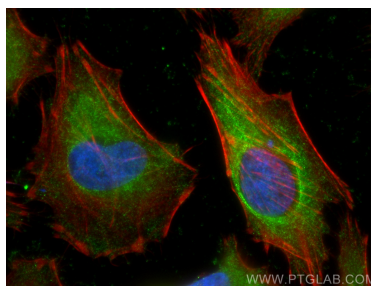
E: [proteintech@ptglab.com](mailto:proteintech@ptglab.com)  
W: [ptglab.com](http://ptglab.com)

This product is exclusively available under Proteintech Group brand and is not available to purchase from any other manufacturer.

## Selected Validation Data



Various lysates were subjected to SDS PAGE followed by western blot with 66882-1-Ig (SERPING1 antibody) at dilution of 1:5000 incubated at room temperature for 1.5 hours. This data was developed using the same antibody clone with 66882-1-PBS in a different storage buffer formulation.



Immunofluorescent analysis of (-20°C Ethanol) fixed HeLa cells using SERPING1/C1 Inactivator antibody (66882-1-Ig, Clone: 1B11B11 ) at dilution of 1:800 and CoraLite@488-Conjugated AffiniPure Goat Anti-Mouse IgG(H+L), CL594-Phalloidin (red). This data was developed using the same antibody clone with 66882-1-PBS in a different storage buffer formulation.