

For Research Use Only

ASF1A Monoclonal antibody

Catalog Number: 66884-1-Ig



Basic Information

Catalog Number: 66884-1-Ig	GenBank Accession Number: BC010878	Purification Method: Protein A purification
Size: 150ul , Concentration: 1400 ug/ml by Nanodrop and 1000 ug/ml by Bradford method using BSA as the standard;	GeneID (NCBI): 25842	CloneNo.: 2D4A6
Source: Mouse	UNIPROT ID: Q9Y294	Recommended Dilutions: WB 1:1000-1:4000 IF/ICC 1:250-1:1000
Isotype: IgG3	Full Name: ASF1 anti-silencing function 1 homolog A (S. cerevisiae)	
Immunogen Catalog Number: AG1233	Calculated MW: 204 aa, 23 kDa	
	Observed MW: 21-23 kDa	

Applications

Tested Applications: WB, IF/ICC, ELISA	Positive Controls: WB : Jurkat cells, HSC-T6 cells
Species Specificity: human, rat	IF/ICC : HepG2 cells,

Background Information

Anti-silencing function 1, *S.cerevisiae*, homolog of A(ASF1A) is a histone chaperone that has a crucial role in the remodeling of chromatin structure during replication, DNA repair, and cellular senescence. It promotes chromatin assembly in replication-dependent manner by cooperation with chromatin assembly factor1(CAF-1), and cooperates with HIRA in replication-independent manner. It's required for the formation of senescence-associated heterochromatin foci(SAHF) and efficient senescence-associated cell cycle exit.

Storage

Storage:
Store at -20°C. Stable for one year after shipment.
Storage Buffer:
PBS with 0.02% sodium azide and 50% glycerol pH 7.3.
Aliquoting is unnecessary for -20°C storage

*** 20ul sizes contain 0.1% BSA

For technical support and original validation data for this product please contact:

T: 1 (888) 4PTGLAB (1-888-478-4522) (toll free in USA), or 1(312) 455-8498 (outside USA)

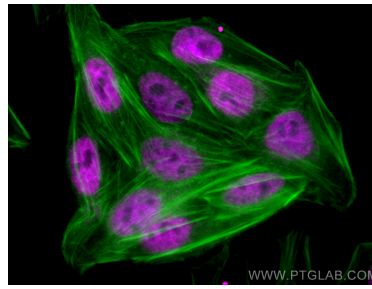
E: proteintech@ptglab.com
W: ptglab.com

This product is exclusively available under Proteintech Group brand and is not available to purchase from any other manufacturer.

Selected Validation Data



Jurkat cells were subjected to SDS PAGE followed by western blot with 66884-1-Ig (ASF1A antibody) at dilution of 1:2000 incubated at room temperature for 1.5 hours.



Immunofluorescent analysis of (4% PFA) fixed HepG2 cells using ASF1A antibody (66884-1-Ig, Clone: 2D4A6) at dilution of 1:500 and sms3AF647-1, CL488-Phalloidin (green).