

For Research Use Only

# GLUT2 Monoclonal antibody

Catalog Number: 66889-1-Ig **3 Publications**



## Basic Information

<b>Catalog Number:</b> 66889-1-Ig	<b>GenBank Accession Number:</b> BC060041	<b>Purification Method:</b> Protein G purification
<b>Size:</b> 150ul , Concentration: 1000 ug/ml by Nanodrop;	<b>GeneID (NCBI):</b> 6514	<b>CloneNo.:</b> 1G8B1
<b>Source:</b> Mouse	<b>UNIPROT ID:</b> P11168	<b>Recommended Dilutions:</b> WB 1:5000-1:50000 IHC 1:500-1:2000
<b>Isotype:</b> IgG1	<b>Full Name:</b> solute carrier family 2 (facilitated glucose transporter), member 2	
<b>Immunogen Catalog Number:</b> AG14551	<b>Calculated MW:</b> 57 kDa	
	<b>Observed MW:</b> 55-60 kDa	

## Applications

<b>Tested Applications:</b> WB, IHC, ELISA	<b>Positive Controls:</b>
<b>Cited Applications:</b> WB, IHC, IF	<b>WB :</b> 4T1 cells, HSC-T6 cells, HeLa cells, HepG2 cells
<b>Species Specificity:</b> Human, rat, mouse	<b>IHC :</b> human pancreas cancer tissue,
<b>Cited Species:</b> human, mouse, rat	
<b>Note-IHC: suggested antigen retrieval with TE buffer pH 9.0; (*) Alternatively, antigen retrieval may be performed with citrate buffer pH 6.0</b>	

## Background Information

GLUT2 is a member of glucose transporters or GLUTs which catalyze the glucose transport across plasma membrane. GLUT2 is selectively expressed in hepatocytes, pancreatic beta cells, and absorptive renal and intestinal epithelial cells. GLUT2 is required to maintain normal glucose homeostasis and normal function and development of the endocrine pancreas. Its absence leads to symptoms characteristic of non-insulin-dependent diabetes mellitus.

## Notable Publications

Author	Pubmed ID	Journal	Application
Sipeng Sun	39263491	J Diabetes Res	WB,IF
Weijian Zhang	38192676	Oncol Lett	IHC
Chisato Nakamura	37407613	Sci Rep	IF

## Storage

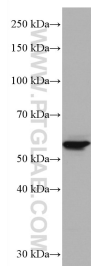
**Storage:**  
Store at -20°C. Stable for one year after shipment.  
**Storage Buffer:**  
PBS with 0.02% sodium azide and 50% glycerol, pH7.3  
Aliquoting is unnecessary for -20°C storage

\*\*\* 20ul sizes contain 0.1% BSA

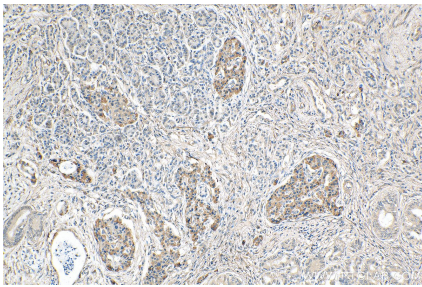
For technical support and original validation data for this product please contact:  
T: 1 (888) 4PTGLAB (1-888-478-4522) (toll free in USA), or 1(312) 455-8498 (outside USA)  
E: proteintech@ptglab.com  
W: ptglab.com

This product is exclusively available under Proteintech Group brand and is not available to purchase from any other manufacturer.

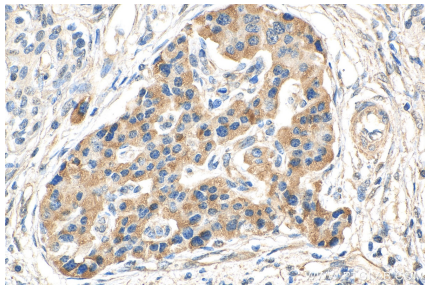
## Selected Validation Data



4T1 cells were subjected to SDS PAGE followed by western blot with 66889-1-Ig (SLC2A2 antibody) at dilution of 1:10000 incubated at room temperature for 1.5 hours.



Immunohistochemical analysis of paraffin-embedded human pancreas cancer tissue slide using 66889-1-Ig (GLUT2 antibody) at dilution of 1:1000 (under 10x lens). Heat mediated antigen retrieval with Tris-EDTA buffer (pH 9.0).



Immunohistochemical analysis of paraffin-embedded human pancreas cancer tissue slide using 66889-1-Ig (GLUT2 antibody) at dilution of 1:1000 (under 40x lens). Heat mediated antigen retrieval with Tris-EDTA buffer (pH 9.0).