

For Research Use Only

GLUT2 Monoclonal antibody

Catalog Number: 66889-1-Ig **2 Publications**



Basic Information

| | | |
|---|--|--|
| Catalog Number: 66889-1-Ig | GenBank Accession Number: BC060041 | Purification Method: Protein G purification |
| Size: 150ul, Concentration: 1500 µg/ml by Nanodrop and 1000 µg/ml by Bradford method using BSA as the standard; | GeneID (NCBI): 6514 | CloneNo.: 1G8B1 |
| Source: Mouse | Full Name: solute carrier family 2 (facilitated glucose transporter), member 2 | Recommended Dilutions: WB 1:5000-1:50000 IHC 1:500-1:2000 |
| Isotype: IgG1 | Calculated MW: 57 kDa | |
| Immunogen Catalog Number: AG14551 | Observed MW: 55-60 kDa | |

Applications

Tested Applications:
IHC, WB, ELISA

Cited Applications:
IF, IHC

Species Specificity:
Human, rat, mouse

Cited Species:
human, mouse

Note-IHC: suggested antigen retrieval with TE buffer pH 9.0; (*) Alternatively, antigen retrieval may be performed with citrate buffer pH 6.0

Positive Controls:

WB : 4T1 cells, HSC-T6 cells, HeLa cells, HepG2 cells

IHC : human pancreas cancer tissue,

Background Information

GLUT2 is a member of glucose transporters or GLUTs which catalyze the glucose transport across plasma membrane. GLUT2 is selectively expressed in hepatocytes, pancreatic beta cells, and absorptive renal and intestinal epithelial cells. GLUT2 is required to maintain normal glucose homeostasis and normal function and development of the endocrine pancreas. Its absence leads to symptoms characteristic of non-insulin-dependent diabetes mellitus.

Notable Publications

| Author | Pubmed ID | Journal | Application |
|------------------|-----------|------------|-------------|
| Weijian Zhang | 38192676 | Oncol Lett | IHC |
| Chisato Nakamura | 37407613 | Sci Rep | IF |

Storage

Storage:

Store at -20°C. Stable for one year after shipment.

Storage Buffer:

PBS with 0.1% sodium azide and 50% glycerol pH 7.3.

Aliquoting is unnecessary for -20°C storage

*** 20ul sizes contain 0.1% BSA

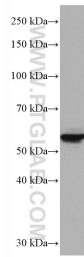
For technical support and original validation data for this product please contact:

T: 1 (888) 4PTGLAB (1-888-478-4522) (toll free in USA), or 1(312) 455-8498 (outside USA)

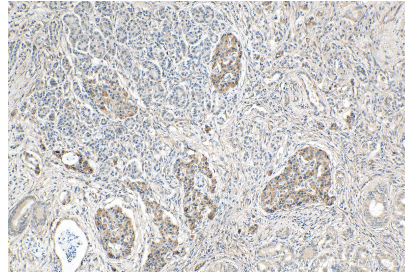
E: proteintech@ptglab.com
W: ptglab.com

This product is exclusively available under Proteintech Group brand and is not available to purchase from any other manufacturer.

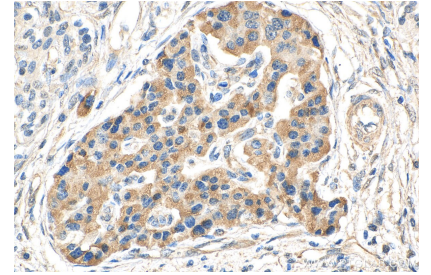
Selected Validation Data



4T1 cells were subjected to SDS PAGE followed by western blot with 66889-1-Ig (SLC2A2 antibody) at dilution of 1:10000 incubated at room temperature for 1.5 hours.



Immunohistochemical analysis of paraffin-embedded human pancreas cancer tissue slide using 66889-1-Ig (GLUT2 antibody) at dilution of 1:1000 (under 10x lens). Heat mediated antigen retrieval with Tris-EDTA buffer (pH 9.0).



Immunohistochemical analysis of paraffin-embedded human pancreas cancer tissue slide using 66889-1-Ig (GLUT2 antibody) at dilution of 1:1000 (under 40x lens). Heat mediated antigen retrieval with Tris-EDTA buffer (pH 9.0).