

For Research Use Only

# GLUT2 Monoclonal antibody, PBS Only



Catalog Number: 66889-1-PBS

## Basic Information

<b>Catalog Number:</b> 66889-1-PBS	<b>GenBank Accession Number:</b> BC060041	<b>Purification Method:</b> Protein G purification
<b>Size:</b> 100ug , Concentration: 1 mg/ml by Nanodrop;	<b>GeneID (NCBI):</b> 6514	<b>CloneNo.:</b> 1G8B1
<b>Source:</b> Mouse	<b>UNIPROT ID:</b> P11168	
<b>Isotype:</b> IgG1	<b>Full Name:</b> solute carrier family 2 (facilitated glucose transporter), member 2	
<b>Immunogen Catalog Number:</b> AG14551	<b>Calculated MW:</b> 57 kDa	
	<b>Observed MW:</b> 55-60 kDa	

## Applications

**Tested Applications:**  
WB, IHC, Indirect ELISA

**Species Specificity:**  
Human, rat, mouse

## Background Information

GLUT2 is a member of glucose transporters or GLUTs which catalyze the glucose transport across plasma membrane. GLUT2 is selectively expressed in hepatocytes, pancreatic beta cells, and absorptive renal and intestinal epithelial cells. GLUT2 is required to maintain normal glucose homeostasis and normal function and development of the endocrine pancreas. Its absence leads to symptoms characteristic of non-insulin-dependent diabetes mellitus.

## Storage

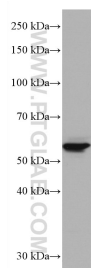
**Storage:**  
Store at -80°C.

**Storage Buffer:**  
PBS Only

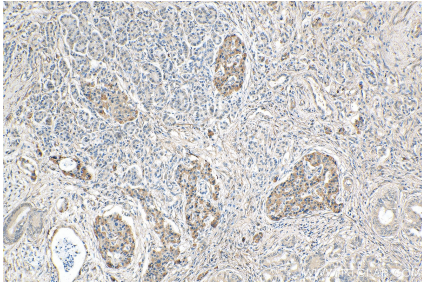
For technical support and original validation data for this product please contact:  
T: 1 (888) 4PTGLAB (1-888-478-4522) (toll free in USA), or 1(312) 455-8498 (outside USA)  
E: [proteintech@ptglab.com](mailto:proteintech@ptglab.com)  
W: [ptglab.com](http://ptglab.com)

This product is exclusively available under Proteintech Group brand and is not available to purchase from any other manufacturer.

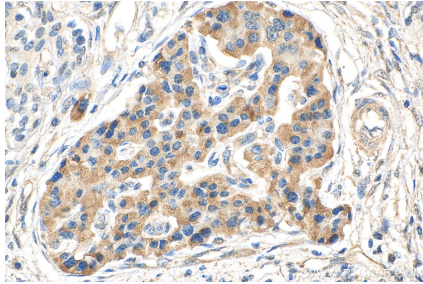
## Selected Validation Data



4T1 cells were subjected to SDS PAGE followed by western blot with 66889-1-Ig (SLC2A2 antibody) at dilution of 1:10000 incubated at room temperature for 1.5 hours. This data was developed using the same antibody clone with 66889-1-PBS in a different storage buffer formulation.



Immunohistochemical analysis of paraffin-embedded human pancreas cancer tissue slide using 66889-1-Ig (GLUT2 antibody) at dilution of 1:1000 (under 10x lens). Heat mediated antigen retrieval with Tris-EDTA buffer (pH 9.0). This data was developed using the same antibody clone with 66889-1-PBS in a different storage buffer formulation.



Immunohistochemical analysis of paraffin-embedded human pancreas cancer tissue slide using 66889-1-Ig (GLUT2 antibody) at dilution of 1:1000 (under 40x lens). Heat mediated antigen retrieval with Tris-EDTA buffer (pH 9.0). This data was developed using the same antibody clone with 66889-1-PBS in a different storage buffer formulation.