

For Research Use Only

Jagged1/CD339 Monoclonal antibody

Catalog Number: 66890-1-Ig

Featured Product

13 Publications



Basic Information

Catalog Number:

66890-1-Ig

Size:

150ul, Concentration: 4203 ug/ml by 182 Nanodrop and 1000 ug/ml by Bradford method using BSA as the standard;

Source:

Mouse

Isotype:

IgA

Immunogen Catalog Number:

AG11891

GenBank Accession Number:

BC098393

GeneID (NCBI):

182

UNIPROT ID:

P78504

Full Name:

jagged 1 (Alagille syndrome)

Calculated MW:

1218 aa, 134 kDa

Observed MW:

150 kDa

Purification Method:

Protein A purification

CloneNo.:

2A7D11

Recommended Dilutions:

WB 1:5000-1:50000

Applications

Tested Applications:

WB, ELISA

Cited Applications:

WB

Species Specificity:

human

Cited Species:

human, goat

Positive Controls:

WB : HEK-293 cells, HT-29 cells

Background Information

Jagged1 is a type I, membrane- anchored, multidomain protein and a ligand of the Notch receptor. The receptor-ligand interaction can trigger the Notch signaling and activate transcription factors that play key roles in cell differentiation and morphogenesis. The predicted MW of Jagged1 is 134 kDa, while higher MW around 150-180 kDa had been observed in literatures (PMID: 9716576, 9596653).

Notable Publications

Author	Pubmed ID	Journal	Application
Xianyun Xu	36158688	Front Oncol	WB
LinXi Cheng	34489520	Commun Biol	
Wenyu Zhu	34591397	Int J Med Mushrooms	WB

Storage

Storage:

Store at -20°C. Stable for one year after shipment.

Storage Buffer:

PBS with 0.02% sodium azide and 50% glycerol, pH7.3

Aliquoting is unnecessary for -20°C storage

*** 20ul sizes contain 0.1% BSA

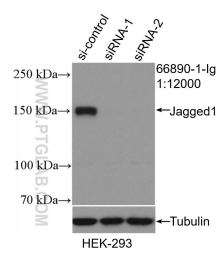
For technical support and original validation data for this product please contact:

T: 1 (888) 4PTGLAB (1-888-478-4522) (toll free in USA), or 1(312) 455-8498 (outside USA)

E: proteintech@ptglab.com
W: ptglab.com

This product is exclusively available under Proteintech Group brand and is not available to purchase from any other manufacturer.

Selected Validation Data



WB result of Jagged1 antibody (66890-1-Ig; 1:12000; incubated at room temperature for 1.5 hours) with sh-Control and sh-Jagged1 transfected HEK-293 cells.