

For Research Use Only

# DMXL2 Monoclonal antibody

Catalog Number: 66891-2-Ig



## Basic Information

<b>Catalog Number:</b> 66891-2-Ig	<b>GenBank Accession Number:</b> BC140781	<b>Purification Method:</b> Protein A purification
<b>Size:</b> 150ul , Concentration: 1800 µg/ml by Nanodrop and 1000 µg/ml by Bradford method using BSA as the standard;	<b>GeneID (NCBI):</b> 23312	<b>CloneNo.:</b> 1F9A8
<b>Source:</b> Mouse	<b>Full Name:</b> Dmx-like 2	<b>Recommended Dilutions:</b> WB 1:2000-1:10000
<b>Isotype:</b> IgG2b	<b>Calculated MW:</b> 3036 aa, 340 kDa	
<b>Immunogen Catalog Number:</b> AG19861	<b>Observed MW:</b> 340 kDa	

## Applications

<b>Tested Applications:</b> WB, ELISA	<b>Positive Controls:</b> WB : mouse cerebellum tissue, Jurkat cells, rat brain tissue
<b>Species Specificity:</b> Human, mouse, rat, pig	

## Background Information

DMXL2, also named as rabconnectin-3, is a functional regulator of mammalian notch signaling with WD domains. Rabconnectin-3 is abundantly expressed in the brain where it is enriched in the synaptic vesicle fraction. Immunofluorescence and immunoelectron microscopy revealed that rabconnectin-3 was concentrated on synaptic vesicles at synapses. It may serve as a scaffold molecule for both Rab3 GEP and GAP on synaptic vesicles.

## Storage

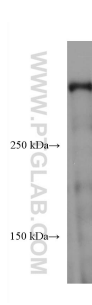
**Storage:**  
Store at -20°C. Stable for one year after shipment.  
**Storage Buffer:**  
PBS with 0.02% sodium azide and 50% glycerol pH 7.3.  
Aliquoting is unnecessary for -20°C storage

\*\*\* 20ul sizes contain 0.1% BSA

For technical support and original validation data for this product please contact:  
T: 1 (888) 4PTGLAB (1-888-478-4522) (toll free in USA), or 1(312) 455-8498 (outside USA)  
E: proteintech@ptglab.com  
W: ptglab.com

This product is exclusively available under Proteintech Group brand and is not available to purchase from any other manufacturer.

## Selected Validation Data



mouse cerebellum tissue were subjected to SDS PAGE followed by western blot with 66891-2-Ig (DMXL2 antibody) at dilution of 1:5000 incubated at room temperature for 1.5 hours.