

For Research Use Only

DLC1 Monoclonal antibody

Catalog Number: 66894-1-Ig **1 Publications**



Basic Information

Catalog Number: 66894-1-Ig	GenBank Accession Number: BC054511	Purification Method: Protein G purification
Size: 150ul , Concentration: 2100 ug/ml by Nanodrop and 980 ug/ml by Bradford method using BSA as the standard;	GeneID (NCBI): 10395	CloneNo.: 1G10H12
Source: Mouse	UNIPROT ID: Q96QB1	Recommended Dilutions: WB 1:2000-1:10000 IF/ICC 1:400-1:1600
Isotype: IgG1	Full Name: deleted in liver cancer 1	
Immunogen Catalog Number: AG24404	Calculated MW: 171 kDa	
	Observed MW: 115 kDa	

Applications

Tested Applications: WB, IF/ICC, ELISA	Positive Controls: WB : NCI-H1299 cells, HepG2 cells, A549 cells
Cited Applications: WB	IF/ICC : A375 cells, HepG2 cells
Species Specificity: Human	
Cited Species: human	

Background Information

Deleted in Liver Cancer 1 (DLC1) is a RhoGAP-containing tumor suppressor that inhibits angiogenesis by repressing VEGF production in epithelial cells. DLC1 is often down-regulated in a variety of cancers, such as those of the liver, lung, breast, stomach, brain, colon and prostate due to either genomic deletion or aberrant DNA methylation.

Notable Publications

Author	Pubmed ID	Journal	Application
Wen-Di Zhang	37790851	Int J Med Sci	WB

Storage

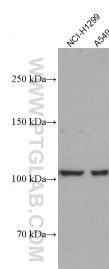
Storage:
Store at -20°C. Stable for one year after shipment.
Storage Buffer:
PBS with 0.02% sodium azide and 50% glycerol pH 7.3.
Aliquoting is unnecessary for -20°C storage

*** 20ul sizes contain 0.1% BSA

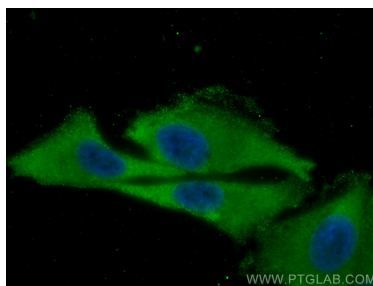
For technical support and original validation data for this product please contact:
T: 1 (888) 4PTGLAB (1-888-478-4522) (toll free in USA), or 1(312) 455-8498 (outside USA)
E: proteintech@ptglab.com
W: ptglab.com

This product is exclusively available under Proteintech Group brand and is not available to purchase from any other manufacturer.

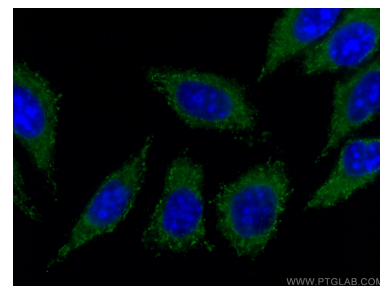
Selected Validation Data



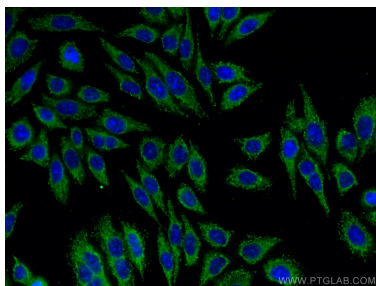
Various lysates were subjected to SDS PAGE followed by western blot with 66894-1-Ig (DLC1 antibody) at dilution of 1:5000 incubated at room temperature for 1.5 hours.



Immunofluorescent analysis of (-20°C Methanol) fixed A375 cells using DLC1 antibody (66894-1-Ig, Clone: 1G10H12) at dilution of 1:800 and CoraLite®488-Conjugated Goat Anti-Mouse IgG(H+L).



Immunofluorescent analysis of (-20°C Methanol) fixed HepG2 cells using DLC1 antibody (66894-1-Ig, Clone: 1G10H12) at dilution of 1:400 and CoraLite®488-Conjugated Goat Anti-Mouse IgG(H+L).



Immunofluorescent analysis of (-20°C Methanol) fixed HepG2 cells using DLC1 antibody (66894-1-Ig, Clone: 1G10H12) at dilution of 1:400 and CoraLite®488-Conjugated Goat Anti-Mouse IgG(H+L).