

For Research Use Only

# DLC1 Monoclonal antibody, PBS Only



Catalog Number: 66894-1-PBS

## Basic Information

**Catalog Number:**

66894-1-PBS

**Size:**

100ug, Concentration: 1 mg/ml by Nanodrop;

**Source:**

Mouse

**Isotype:**

IgG1

**Immunogen Catalog Number:**

AG24404

**GenBank Accession Number:**

BC054511

**GeneID (NCBI):**

10395

**UNIPROT ID:**

Q96QB1

**Full Name:**

deleted in liver cancer 1

**Calculated MW:**

171 kDa

**Observed MW:**

115 kDa

**Purification Method:**

Protein G purification

**CloneNo.:**

1G10H12

## Applications

**Tested Applications:**

WB, IF, Indirect ELISA

**Species Specificity:**

Human

## Background Information

Deleted in Liver Cancer 1 (DLC1) is a RhoGAP-containing tumor suppressor that inhibits angiogenesis by repressing VEGF production in epithelial cells. DLC1 is often down-regulated in a variety of cancers, such as those of the liver, lung, breast, stomach, brain, colon and prostate due to either genomic deletion or aberrant DNA methylation.

## Storage

**Storage:**

Store at -80°C.

**Storage Buffer:**

PBS Only

For technical support and original validation data for this product please contact:

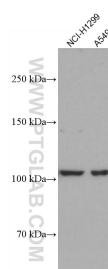
T: 1 (888) 4PTGLAB (1-888-478-4522) (toll free in USA), or 1(312) 455-8498 (outside USA)

E: [proteintech@ptglab.com](mailto:proteintech@ptglab.com)

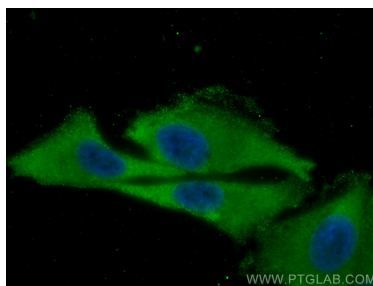
W: [ptglab.com](http://ptglab.com)

This product is exclusively available under Proteintech Group brand and is not available to purchase from any other manufacturer.

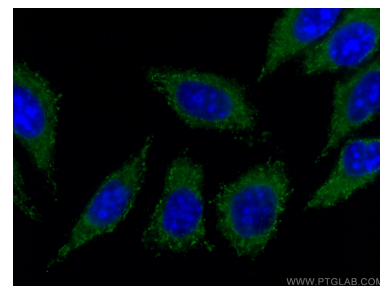
## Selected Validation Data



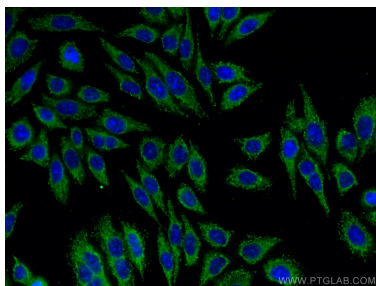
Various lysates were subjected to SDS PAGE followed by western blot with 66894-1-Ig (DLC1 antibody) at dilution of 1:5000 incubated at room temperature for 1.5 hours. This data was developed using the same antibody clone with 66894-1-PBS in a different storage buffer formulation.



Immunofluorescent analysis of (-20°C Methanol) fixed A375 cells using DLC1 antibody (66894-1-Ig, Clone: 1G10H12 ) at dilution of 1:800 and CoraLite®488-Conjugated AffiniPure Goat Anti-Mouse IgG(H+L). This data was developed using the same antibody clone with 66894-1-PBS in a different storage buffer formulation.



Immunofluorescent analysis of (-20°C Methanol) fixed HepG2 cells using DLC1 antibody (66894-1-Ig, Clone: 1G10H12 ) at dilution of 1:400 and CoraLite®488-Conjugated AffiniPure Goat Anti-Mouse IgG(H+L). This data was developed using the same antibody clone with 66894-1-PBS in a different storage buffer formulation.



Immunofluorescent analysis of (-20°C Methanol) fixed HepG2 cells using DLC1 antibody (66894-1-Ig, Clone: 1G10H12 ) at dilution of 1:400 and CoraLite®488-Conjugated AffiniPure Goat Anti-Mouse IgG(H+L). This data was developed using the same antibody clone with 66894-1-PBS in a different storage buffer formulation.