

For Research Use Only

Alpha Actinin Monoclonal antibody, PBS Only



Catalog Number: 66895-1-PBS

Basic Information

Catalog Number: 66895-1-PBS	GenBank Accession Number: BC015766	Purification Method: Protein A purification
Size: 100ug , Concentration: 1mg/ml by Nanodrop;	GeneID (NCBI): 87	CloneNo.: 1E2E1
Source: Mouse	UNIPROT ID: P12814	
Isotype: IgG2b	Full Name: actinin, alpha 1	
Immunogen Catalog Number: AG28383	Calculated MW: 103 kDa	
	Observed MW: 100-105 kDa	

Applications

Tested Applications:
WB, IHC, IF/ICC, Indirect ELISA

Species Specificity:
Human, rat, mouse

Background Information

Alpha Actinins are highly conserved actin-binding proteins that form antiparallel homodimers with the actin-binding domains on each end of the molecule, allowing crosslinking of actin molecules. There are four alpha actinin isoforms identified: two ubiquitously expressed cytoskeletal isoforms (ACTN1 and ACTN4) and two striated muscle-specific sarcomeric isoforms (ACTN2 and ACTN3). ACTN1 is also alternatively spliced to form smooth muscle or brain specific isoforms. This antibody recognize endogenous ACTN1, while it may cross-react with ACTN2 and ACTN4.

Storage

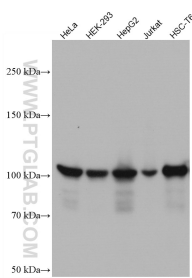
Storage:
Store at -80°C.

Storage Buffer:
PBS Only

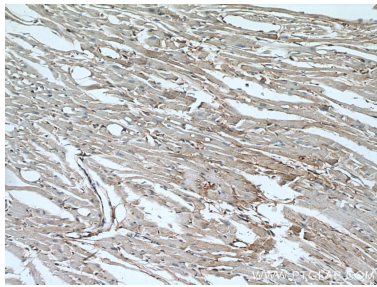
For technical support and original validation data for this product please contact:
T: 1 (888) 4PTGLAB (1-888-478-4522) (toll free in USA), or 1(312) 455-8498 (outside USA)
E: proteintech@ptglab.com
W: ptglab.com

This product is exclusively available under Proteintech Group brand and is not available to purchase from any other manufacturer.

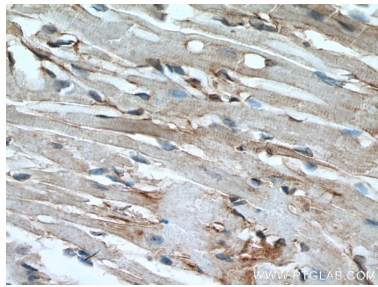
Selected Validation Data



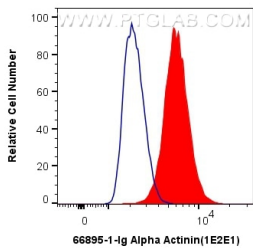
Various lysates were subjected to SDS PAGE followed by western blot with 66895-1-Ig (a-Actinin antibody) at dilution of 1:10000 incubated at room temperature for 1.5 hours. This data was developed using the same antibody clone with 66895-1-PBS in a different storage buffer formulation.



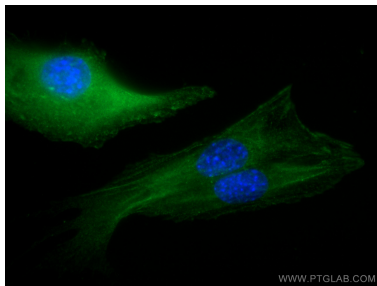
Immunohistochemical analysis of paraffin-embedded mouse heart tissue slide using 66895-1-Ig (alpha Actinin antibody) at dilution of 1:1000 (under 10x lens. Heat mediated antigen retrieval with Tris-EDTA buffer (pH 9.0). This data was developed using the same antibody clone with 66895-1-PBS in a different storage buffer formulation.



Immunohistochemical analysis of paraffin-embedded mouse heart tissue slide using 66895-1-Ig (alpha Actinin antibody) at dilution of 1:1000 (under 40x lens. Heat mediated antigen retrieval with Tris-EDTA buffer (pH 9.0). This data was developed using the same antibody clone with 66895-1-PBS in a different storage buffer formulation.



1X10⁶ A431 cells were intracellularly stained with 0.4 ug Anti-Human Alpha Actinin (66895-1-Ig, Clone:1E2E1) and Coralite®488-Conjugated AffiniPure Goat Anti-Mouse IgG(H+L) at dilution 1:1000 (red), or 0.4 ug Mouse IgG2b Isotype Control (MPC-11) (65128-1-Ig, Clone: MPC-11) (blue). Cells were fixed with 4% PFA and permeabilized with Flow Cytometry Perm Buffer (PF00011-C). This data was developed using the same antibody clone with 66895-1-PBS in a



Immunofluorescent analysis of (-20°C Methanol) fixed C2C12 cells using Alpha Actinin antibody (66895-1-Ig, Clone: 1E2E1) at dilution of 1:400 and Coralite®488-Conjugated AffiniPure Goat Anti-Mouse IgG(H+L). This data was developed using the same antibody clone with 66895-1-PBS in a different storage buffer formulation.