

For Research Use Only

# SPTLC1 Monoclonal antibody

Catalog Number: 66899-1-Ig

Featured Product

1 Publications



## Basic Information

Catalog Number:

66899-1-Ig

Size:

150ul, Concentration: 1000 ug/ml by Nanodrop;

Source:

Mouse

Isotype:

IgG1

Immunogen Catalog Number:

AG7876

GenBank Accession Number:

BC007085

GeneID (NCBI):

10558

UNIPROT ID:

O15269

Full Name:

serine palmitoyltransferase, long chain base subunit 1

Calculated MW:

53 kDa

Observed MW:

55 kDa

Purification Method:

Protein G purification

CloneNo.:

2D11D7

Recommended Dilutions:

WB 1:5000-1:50000

IHC 1:50-1:500

IF/ICC 1:490-1:1962

## Applications

Tested Applications:

WB, IHC, IF/ICC, ELISA

Cited Applications:

WB

Species Specificity:

human, mouse, rat

Cited Species:

human

**Note-IHC: suggested antigen retrieval with TE buffer pH 9.0; (\*) Alternatively, antigen retrieval may be performed with citrate buffer pH 6.0**

Positive Controls:

WB : A549 cells, HEK-293 cells, RAW 264.7 cells, HT-29 cells, HeLa cells, HepG2 cells, Jurkat cells, K-562 cells, HSC-T6 cells, NIH/3T3 cells

IHC : human colon cancer tissue,

IF/ICC : HepG2 cells,

## Background Information

SPTLC1 is a subunit of serine palmitoyltransferase (SPT) which is the key enzyme in sphingolipid biosynthesis and is essential for embryogenesis and cell survival. Mutations in the SPTLC1 gene (C133W, C133Y, V144D, and G387A) were reported to be responsible for the development of an inherited sensory neuropathy (hereditary sensory neuropathy type I, HSN1).

## Notable Publications

Author	Pubmed ID	Journal	Application
Xianping Shi	33080033	Nucleic Acids Res	WB

## Storage

Storage:

Store at -20°C. Stable for one year after shipment.

Storage Buffer:

PBS with 0.02% sodium azide and 50% glycerol pH 7.3.

Aliquoting is unnecessary for -20°C storage

\*\*\* 20ul sizes contain 0.1% BSA

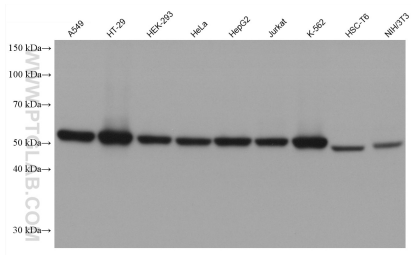
For technical support and original validation data for this product please contact:

T: 1 (888) 4PTGLAB (1-888-478-4522) (toll free in USA), or 1(312) 455-8498 (outside USA)

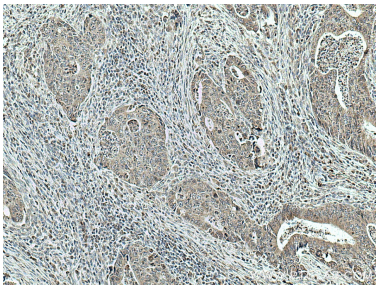
E: [proteintech@ptglab.com](mailto:proteintech@ptglab.com)  
W: [ptglab.com](http://ptglab.com)

This product is exclusively available under Proteintech Group brand and is not available to purchase from any other manufacturer.

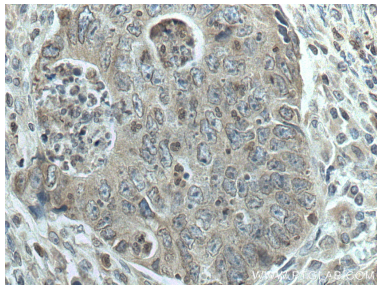
Selected Validation Data



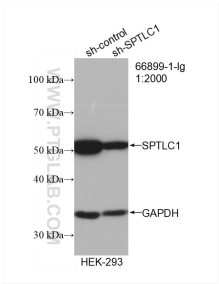
Various lysates were subjected to SDS PAGE followed by western blot with 66899-1-Ig (SPTLC1 antibody) at dilution of 1:10000 incubated at room temperature for 1.5 hours.



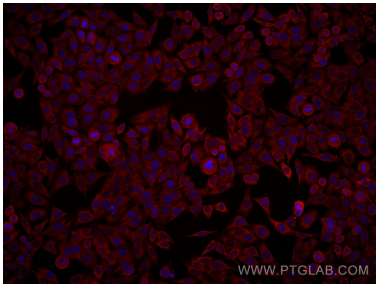
Immunohistochemical analysis of paraffin-embedded human colon cancer tissue slide using 66899-1-Ig (SPTLC1 antibody) at dilution of 1:500 (under 10x lens. Heat mediated antigen retrieval with Tris-EDTA buffer (pH 9.0).



Immunohistochemical analysis of paraffin-embedded human colon cancer tissue slide using 66899-1-Ig (SPTLC1 antibody) at dilution of 1:500 (under 40x lens. Heat mediated antigen retrieval with Tris-EDTA buffer (pH 9.0).



WB result of SPTLC1 antibody (66899-1-Ig; 1:2000; incubated at room temperature for 1.5 hours) with sh-Control and sh-SPTLC1 transfected HEK-293 cells.



Immunofluorescent analysis of (4% PFA) fixed HepG2 cells using SPTLC1 antibody (66899-1-Ig, Clone: 2D11D7 ) at dilution of 1:981 and Multi-rAb Coralite® Plus 594-Goat Anti-Mouse Recombinant Secondary Antibody (H+L) (Cat.NO. RGAM004 ).