

For Research Use Only

# SPTLC1 Monoclonal antibody, PBS Only (Detector)

Catalog Number: 66899-1-PBS

Featured Product



## Basic Information

Catalog Number:

66899-1-PBS

Size:

100ug, Concentration: 1mg/ml by Nanodrop;

Source:

Mouse

Isotype:

IgG1

Immunogen Catalog Number:

AG7876

GenBank Accession Number:

BC007085

GeneID (NCBI):

10558

UNIPROT ID:

O15269

Full Name:

serine palmitoyltransferase, long chain base subunit 1

Calculated MW:

53 kDa

Observed MW:

55 kDa

Purification Method:

Protein G purification

CloneNo.:

2D11D7

## Applications

Tested Applications:

WB, IHC, IF/ICC, Cytometric bead array, Indirect ELISA

Species Specificity:

human, mouse, rat

## Product Information

66899-1-PBS targets SPTLC1 as part of a matched antibody pair:

MP50865-2: 66899-4-PBS capture and 66899-1-PBS detection (validated in Cytometric bead array)

Unconjugated mouse monoclonal antibody pair in PBS only (BSA and azide free) storage buffer at a concentration of 1 mg/mL, ready for conjugation.

This conjugation ready format makes antibodies ideal for use in many applications including: ELISAs, multiplex assays requiring matched pairs, mass cytometry, and multiplex imaging applications. Antibody use should be optimized by the end user for each application and assay.

## Background Information

SPTLC1 is a subunit of serine palmitoyltransferase (SPT) which is the key enzyme in sphingolipid biosynthesis and is essential for embryogenesis and cell survival. Mutations in the SPTLC1 gene (C133W, C133Y, V144D, and G387A) were reported to be responsible for the development of an inherited sensory neuropathy (hereditary sensory neuropathy type I, HSN1).

## Storage

Storage:

Store at -80°C.

Storage Buffer:

PBS Only

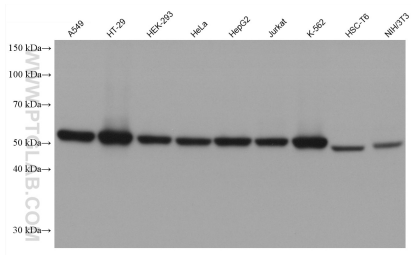
For technical support and original validation data for this product please contact:

T: 1 (888) 4PTGLAB (1-888-478-4522) (toll free in USA), or 1(312) 455-8498 (outside USA)

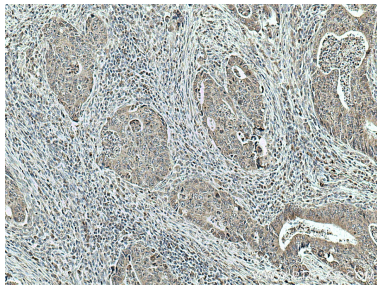
E: [proteintech@ptglab.com](mailto:proteintech@ptglab.com)  
W: [ptglab.com](http://ptglab.com)

This product is exclusively available under Proteintech Group brand and is not available to purchase from any other manufacturer.

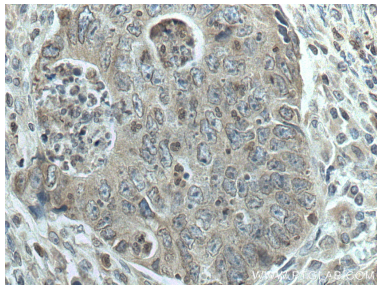
Selected Validation Data



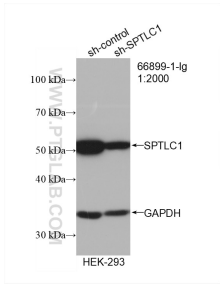
Various lysates were subjected to SDS PAGE followed by western blot with 66899-1-Ig (SPTLC1 antibody) at dilution of 1:10000 incubated at room temperature for 1.5 hours. This data was developed using the same antibody clone with 66899-1-PBS in a different storage buffer formulation.



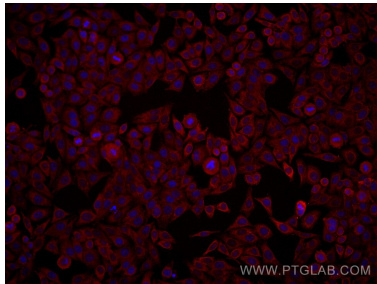
Immunohistochemical analysis of paraffin-embedded human colon cancer tissue slide using 66899-1-Ig (SPTLC1 antibody) at dilution of 1:500 (under 10x lens. Heat mediated antigen retrieval with Tris-EDTA buffer (pH 9.0). This data was developed using the same antibody clone with 66899-1-PBS in a different storage buffer formulation.



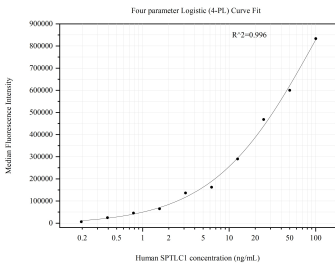
Immunohistochemical analysis of paraffin-embedded human colon cancer tissue slide using 66899-1-Ig (SPTLC1 antibody) at dilution of 1:500 (under 40x lens. Heat mediated antigen retrieval with Tris-EDTA buffer (pH 9.0). This data was developed using the same antibody clone with 66899-1-PBS in a different storage buffer formulation.



WB result of SPTLC1 antibody (66899-1-Ig; 1:2000; incubated at room temperature for 1.5 hours) with sh-Control and sh-SPTLC1 transfected HEK-293 cells. This data was developed using the same antibody clone with 66899-1-PBS in a different storage buffer formulation.



Immunofluorescent analysis of (4% PFA) fixed HepG2 cells using SPTLC1 antibody (66899-1-Ig, Clone: 2D11D7 ) at dilution of 1:981 and Multi-rAb Coralite® Plus 594-Goat Anti-Mouse Recombinant Secondary Antibody (H+L) (Cat.NO. RGAM004 ). This data was developed using the same antibody clone with 66899-1-PBS in a different storage buffer formulation.



Cytometric bead array standard curve of MP50865-2, SPTLC1 Monoclonal Matched Antibody Pair, PBS Only. Capture antibody: 66899-4-PBS. Detection antibody: 66899-1-PBS. Standard:Ag7876. Range: 0.195-100 ng/mL