

For Research Use Only

Calnexin Monoclonal antibody

Catalog Number: 66903-1-Ig **12 Publications**



Basic Information

Catalog Number: 66903-1-Ig	GenBank Accession Number: BC003552	Purification Method: Protein G purification
Size: 150ul , Concentration: 1000 µg/ml by Bradford method using BSA as the standard;	GeneID (NCBI): 821	CloneNo.: 2A2C6
Source: Mouse	Full Name: calnexin	Recommended Dilutions: WB 1:5000-1:20000 IF 1:200-1:800
Isotype: IgG1	Calculated MW: 90 kDa	
Immunogen Catalog Number: AG25535	Observed MW: 90 kDa	

Applications

Tested Applications: IF, WB, ELISA	Positive Controls: WB : HeLa cells,
Cited Applications: IF, WB	IF : HeLa cells, HepG2 cells
Species Specificity: Human, mouse, rat	
Cited Species: human, mouse, pig	

Background Information

Calnexin is a molecular chaperone that resides in the endoplasmic reticulum (ER) and participates in the folding and assembly of newly synthesized proteins. Calnexin is highly abundant in ER and is frequently used as an ER marker.

Notable Publications

Author	Pubmed ID	Journal	Application
Xueqiang Peng	32949647	Biochim Biophys Acta Mol Cell Res	WB
Na-Na Sun	34483252	Chin Med J (Engl)	WB
Yan Lu	33163491	Front Cell Dev Biol	WB

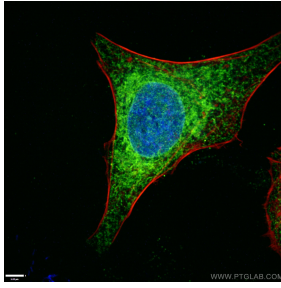
Storage

Storage:
Store at -20°C. Stable for one year after shipment.
Storage Buffer:
PBS with 0.02% sodium azide and 50% glycerol pH 7.3.
Aliquoting is unnecessary for -20°C storage

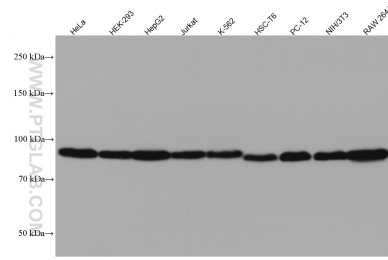
For technical support and original validation data for this product please contact:
T: 1 (888) 4PTGLAB (1-888-478-4522) (toll free in USA), or 1(312) 455-8498 (outside USA)
E: proteintech@ptglab.com
W: ptglab.com

This product is exclusively available under Proteintech Group brand and is not available to purchase from any other manufacturer.

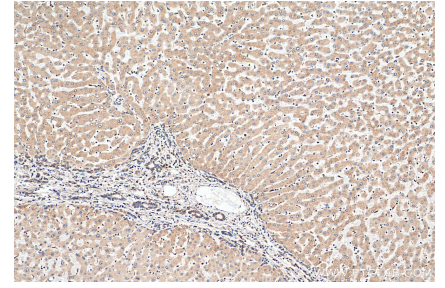
Selected Validation Data



Immunofluorescent analysis of (4% PFA) fixed HeLa cells using 66903-1-Ig (Calnexin antibody), at dilution of 1:400 and CoraLite®488-Conjugated AffiniPure Goat Anti-Mouse IgG(H+L). Red: staining with CoraLite555-Phalloidin.



Various lysates were subjected to SDS PAGE followed by western blot with 66903-1-Ig (Calnexin antibody) at dilution of 1:20000 incubated at room temperature for 1.5 hours.



Immunohistochemical analysis of paraffin-embedded human hepatocirrhosis tissue slide using 66903-1-Ig (Calnexin antibody) at dilution of 1:2000 (under 10x lens). Heat mediated antigen retrieval with Tris-EDTA buffer (pH 9.0).