

For Research Use Only

GLI1 Monoclonal antibody

Catalog Number: 66905-1-Ig

Featured Product

78 Publications



Basic Information

Catalog Number:

66905-1-Ig

Size:

150ul, Concentration: 1000 ug/ml by

Nanodrop;

Source:

Mouse

Isotype:

IgG1

Immunogen Catalog Number:

AG27832

GenBank Accession Number:

BC013000

GeneID (NCBI):

2735

UNIPROT ID:

P08151

Full Name:

GLI family zinc finger 1

Calculated MW:

1106 aa, 118 kDa

Observed MW:

150 kDa

Purification Method:

Protein A purification

CloneNo.:

1D2B2

Recommended Dilutions:

WB 1:5000-1:50000

IF/ICC 1:400-1:1600

Applications

Tested Applications:

WB, IF/ICC, ELISA

Cited Applications:

WB, IHC, IF, IP, CoIP

Species Specificity:

human, mouse, rat, pig

Cited Species:

human, mouse, rat

Positive Controls:

WB: A549 cells, C6 cells, HEK-293 cells, human testis tissue, 4T1 cells, mouse brain tissue, NCI-H1299 cells, PC-3 cells, MCF-7 cells, MDA-MB-231 cells, pig brain tissue, rat brain tissue, BxPC-3 cells, U-251 cells, mouse liver tissue, rat liver tissue

IF/ICC: HeLa cells,

Background Information

GLI1, also known as Glioma-associated oncogene, is a 1106 amino acid protein, which belongs to the GLI C2H2-type zinc-finger protein family. GLI1 is detected in testis and Also expressed in the brain with highest expression in the cerebellum, optic nerve and olfactory tract. GLI1 is tethered in the cytoplasm by binding to SUFU (PubMed:10806483). GLI1 is activated and translocated to the nucleus promoted by interaction with STK36 (PubMed:10806483). Phosphorylation of GLI1 by ULK3 may promote nuclear localization (PubMed:19878745). GLI1 as a transcriptional activator may regulate the transcription of specific genes during normal development (PubMed:19706761). GLI1 plays a role in craniofacial development and digital development, as well as development of the central nervous system and gastrointestinal tract and Mediates SHH signaling (PubMed:19706761). GLI1 plays a role in cell proliferation and differentiation via its role in SHH signaling.

Notable Publications

Author	Pubmed ID	Journal	Application
Qian Wang	32999044	Mol Cancer Ther	WB
Daosen Chen	34659557	J Cancer	WB,IHC
Yijia Jia	34522723	Regen Ther	IHC

Storage

Storage:

Store at -20°C. Stable for one year after shipment.

Storage Buffer:

PBS with 0.02% sodium azide and 50% glycerol, pH7.3

Aliquoting is unnecessary for -20°C storage

*** 20ul sizes contain 0.1% BSA

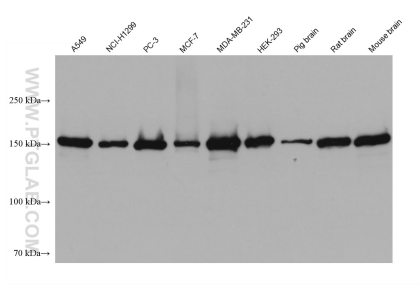
For technical support and original validation data for this product please contact:

T: 1 (888) 4PTGLAB (1-888-478-4522) (toll free in USA), or 1(312) 455-8498 (outside USA)

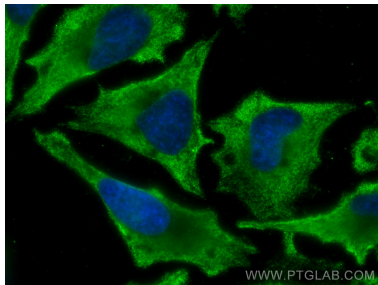
E: proteintech@ptglab.com
W: ptglab.com

This product is exclusively available under Proteintech Group brand and is not available to purchase from any other manufacturer.

Selected Validation Data



Various lysates were subjected to SDS PAGE followed by western blot with 66905-1-Ig (GLI1 antibody) at dilution of 1:20000 incubated at room temperature for 1.5 hours.



Immunofluorescent analysis of (-20°C Ethanol) fixed HeLa cells using GLI1 antibody (66905-1-Ig, Clone: 1D2B2) at dilution of 1:800 and CoraLite®488-Conjugated AffiniPure Goat Anti-Mouse IgG(H+L).