

For Research Use Only

Integrin alpha 6 Monoclonal antibody

Catalog Number: 66906-1-Ig



Basic Information

Catalog Number:

66906-1-Ig

GenBank Accession Number:

BC136456

Purification Method:

Protein A purification

Size:

150ul, Concentration: 1700 ug/ml by 3655

GeneID (NCBI):

3655

CloneNo.:

2B12A1

Nanodrop and 1000 ug/ml by Bradford method using BSA as the standard;

UNIPROT ID:

P23229

Recommended Dilutions:

WB 1:1000-1:6000

Source:

Mouse

Full Name:

integrin, alpha 6

Isotype:

IgG2b

Calculated MW:

1073 aa, 119 kDa

Immunogen Catalog Number:

AG25866

Observed MW:

115-120 kDa

Applications

Tested Applications:

WB, ELISA

Positive Controls:

WB : A431 cells, JAR cells, human placenta tissue

Species Specificity:

Human

Storage

Storage:

Store at -20°C. Stable for one year after shipment.

Storage Buffer:

PBS with 0.02% sodium azide and 50% glycerol pH 7.3.

Aliquoting is unnecessary for -20°C storage

*** 20ul sizes contain 0.1% BSA

For technical support and original validation data for this product please contact:

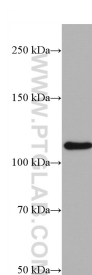
T: 1 (888) 4PTGLAB (1-888-478-4522) (toll free in USA), or 1(312) 455-8498 (outside USA)

E: proteintech@ptglab.com

W: ptglab.com

This product is exclusively available under Proteintech Group brand and is not available to purchase from any other manufacturer.

Selected Validation Data



A431 cells were subjected to SDS PAGE followed by western blot with 66906-1-Ig (Integrin alpha-6 antibody) at dilution of 1:3000 incubated at room temperature for 1.5 hours.