

For Research Use Only

# C7 Monoclonal antibody

Catalog Number: 66908-1-Ig **1 Publications**



## Basic Information

<b>Catalog Number:</b> 66908-1-Ig	<b>GenBank Accession Number:</b> BC063851	<b>Purification Method:</b> Protein G purification
<b>Size:</b> 150ul , Concentration: 2000 ug/ml by Nanodrop and 1000 ug/ml by Bradford method using BSA as the standard;	<b>GeneID (NCBI):</b> 730	<b>CloneNo.:</b> 1H9C4
<b>Source:</b> Mouse	<b>UNIPROT ID:</b> P10643	<b>Recommended Dilutions:</b> WB 1:2000-1:10000 IF/ICC 1:400-1:1600
<b>Isotype:</b> IgG1	<b>Full Name:</b> complement component 7	
<b>Immunogen Catalog Number:</b> AG12552	<b>Calculated MW:</b> 843 aa, 94 kDa	
	<b>Observed MW:</b> 100 kDa	

## Applications

<b>Tested Applications:</b> WB, IF/ICC, ELISA	<b>Positive Controls:</b> WB : human plasma tissue, IF/ICC : HepG2 cells,
<b>Cited Applications:</b> IF	
<b>Species Specificity:</b> human	
<b>Cited Species:</b> pig	

## Background Information

C7, a single-chain plasma glycoprotein, is a component of the complement system. It is a constituent of the membrane attack complex (MAC) that plays a key role in the innate and adaptive immune response by forming pores in the plasma membrane of target cells. C7 serves as a membrane anchor. People with C7 deficiency are prone to bacterial infection.

## Notable Publications

Author	Pubmed ID	Journal	Application
Nadia Khavesh	39568509	Front Cell Dev Biol	IF

## Storage

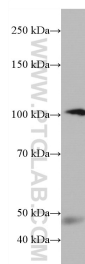
**Storage:**  
Store at -20°C. Stable for one year after shipment.  
**Storage Buffer:**  
PBS with 0.02% sodium azide and 50% glycerol pH 7.3.  
Aliquoting is unnecessary for -20°C storage

\*\*\* 20ul sizes contain 0.1% BSA

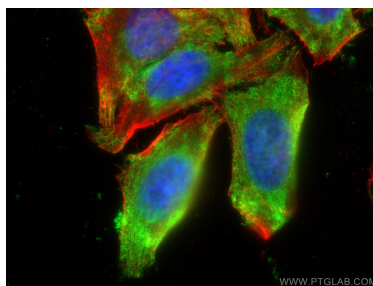
For technical support and original validation data for this product please contact:  
T: 1 (888) 4PTGLAB (1-888-478-4522) (toll free in USA), or 1(312) 455-8498 (outside USA)  
E: [proteintech@ptglab.com](mailto:proteintech@ptglab.com)  
W: [ptglab.com](http://ptglab.com)

This product is exclusively available under Proteintech Group brand and is not available to purchase from any other manufacturer.

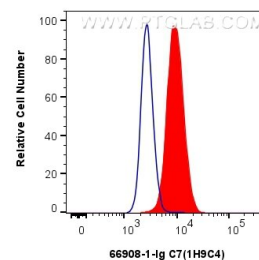
## Selected Validation Data



human plasma were subjected to SDS PAGE followed by western blot with 66908-1-Ig (C7 antibody) at dilution of 1:5000 incubated at room temperature for 1.5 hours.



Immunofluorescent analysis of (-20°C Ethanol) fixed HepG2 cells using C7 antibody (66908-1-Ig, Clone: 1H9C4 ) at dilution of 1:800 and CoraLite®488-Conjugated Goat Anti-Mouse IgG(H+L), CL594-phalloidin (red).



1x10<sup>6</sup> HepG2 cells were intracellularly stained with 0.8 ug C7 Monoclonal antibody (66908-1-Ig, Clone:1H9C4) and CoraLite®488-Conjugated Goat Anti-Mouse IgG(H+L) (SA00013-1)(red), or 0.8 ug Mouse IgG1 isotype control Mouse McAb (66360-1-Ig, Clone: 1F8D3) (blue). Cells were fixed with 4% PFA and permeabilized with Flow Cytometry Perm Buffer (PF00011-C).