

For Research Use Only

C7 Monoclonal antibody

Catalog Number: 66908-1-Ig



Basic Information

Catalog Number: 66908-1-Ig	GenBank Accession Number: BC063851	Purification Method: Protein G purification
Size: 150ul , Concentration: 2000 µg/ml by Nanodrop and 1000 µg/ml by Bradford method using BSA as the standard;	GeneID (NCBI): 730	CloneNo.: 1H9C4
Source: Mouse	Full Name: complement component 7	Recommended Dilutions: WB 1:2000-1:10000
Isotype: IgG1	Calculated MW: 843 aa, 94 kDa	
Immunogen Catalog Number: AG12552	Observed MW: 100 kDa	

Applications

Tested Applications: WB, ELISA	Positive Controls: WB : human plasma tissue,
Species Specificity: Human	

Background Information

C7, a single-chain plasma glycoprotein, is a component of the complement system. It is a constituent of the membrane attack complex (MAC) that plays a key role in the innate and adaptive immune response by forming pores in the plasma membrane of target cells. C7 serves as a membrane anchor. People with C7 deficiency are prone to bacterial infection.

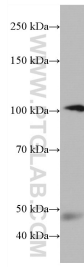
Storage

Storage:
Store at -20°C. Stable for one year after shipment.
Storage Buffer:
PBS with 0.02% sodium azide and 50% glycerol pH 7.3.
Aliquoting is unnecessary for -20°C storage

For technical support and original validation data for this product please contact:
T: 1 (888) 4PTGLAB (1-888-478-4522) (toll free in USA), or 1(312) 455-8498 (outside USA)
E: proteintech@ptglab.com
W: ptglab.com

This product is exclusively available under Proteintech Group brand and is not available to purchase from any other manufacturer.

Selected Validation Data



human plasma were subjected to SDS PAGE followed by western blot with 66908-1-Ig (C7 antibody) at dilution of 1:5000 incubated at room temperature for 1.5 hours.