

For Research Use Only

# CDC25C Monoclonal antibody, PBS Only



Catalog Number: 66912-1-PBS

## Basic Information

<b>Catalog Number:</b> 66912-1-PBS	<b>GenBank Accession Number:</b> BC019089	<b>Purification Method:</b> Protein A purification
<b>Size:</b> 100ug , Concentration: 1mg/ml by Nanodrop;	<b>GeneID (NCBI):</b> 995	<b>CloneNo.:</b> 2B6B12
<b>Source:</b> Mouse	<b>UNIPROT ID:</b> P30307	
<b>Isotype:</b> IgG1	<b>Full Name:</b> cell division cycle 25 homolog C (S. pombe)	
<b>Immunogen Catalog Number:</b> AG10240	<b>Calculated MW:</b> 473 aa, 53 kDa	
	<b>Observed MW:</b> 46-53 kDa	

## Applications

**Tested Applications:**  
Indirect ELISA, WB

**Species Specificity:**  
rat, mouse, human

## Background Information

The cell division cycle 25 (CDC25) family of proteins are highly conserved dual specificity phosphatases that activate cyclin-dependent kinase (CDK) complexes, which in turn regulate progression through the cell division cycle. CDC25C (cell division cycle 25 homolog C) is one of the 3 isoforms of CDC25 in mammalian cells. It is present in the cytoplasm of asynchronously growing human cells (PMID:10330186). And it may be phosphorylated by its own substrate, an active cdc2-cyclin B complex, to create an autoactivation loop (PMID:7937793). It can be hyperphosphorylated to get the active form of 70 kDa (PMID:18296513). CDC25C has some isoforms with molecular mass of 46-53 kDa.

## Storage

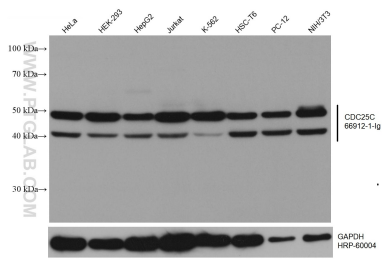
**Storage:**  
Store at -80°C.

**Storage Buffer:**  
PBS Only

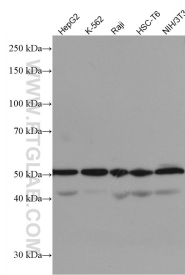
For technical support and original validation data for this product please contact:  
T: 1 (888) 4PTGLAB (1-888-478-4522) (toll free in USA), or 1(312) 455-8498 (outside USA)  
E: [proteintech@ptglab.com](mailto:proteintech@ptglab.com)  
W: [ptglab.com](http://ptglab.com)

This product is exclusively available under Proteintech Group brand and is not available to purchase from any other manufacturer.

## Selected Validation Data



Various lysates were subjected to SDS PAGE followed by western blot with 66912-1-Ig (CDC25C antibody) at dilution of 1:10000 incubated at room temperature for 1.5 hours. The membrane was stripped and reblotted with HRP-conjugated GAPDH Monoclonal antibody (HRP-60004) as loading control. This data was developed using the same antibody clone with 66912-1-PBS in a different storage buffer formulation.



Various lysates were subjected to SDS PAGE followed by western blot with 66912-1-Ig (CDC25C antibody) at dilution of 1:3000 incubated at room temperature for 1.5 hours. This data was developed using the same antibody clone with 66912-1-PBS in a different storage buffer formulation.