

For Research Use Only

Cathepsin L Monoclonal antibody, PBS Only (Detector)

Catalog Number: 66914-1-PBS

Featured Product



Basic Information

Catalog Number:

66914-1-PBS

Size:

100ug, Concentration: 1mg/ml by Nanodrop;

Source:

Mouse

Isotype:

IgG2b

Immunogen Catalog Number:

AG27951

GenBank Accession Number:

BC012612

GeneID (NCBI):

1514

UNIPROT ID:

P07711

Full Name:

cathepsin L1

Calculated MW:

38 kDa

Observed MW:

43 kDa

Purification Method:

Protein A purification

CloneNo.:

1A12G8

Applications

Tested Applications:

WB, IHC, IF/ICC, Cytometric bead array, Indirect ELISA

Species Specificity:

human

Product Information

66914-1-PBS targets Cathepsin L as part of a matched antibody pair:

MP51216-1: 66914-2-PBS capture and 66914-1-PBS detection (validated in Cytometric bead array)

Unconjugated mouse monoclonal antibody pair in PBS only (BSA and azide free) storage buffer at a concentration of 1 mg/mL, ready for conjugation.

This conjugation ready format makes antibodies ideal for use in many applications including: ELISAs, multiplex assays requiring matched pairs, mass cytometry, and multiplex imaging applications. Antibody use should be optimized by the end user for each application and assay.

Background Information

CTSL1 (Cathepsin L1) is also named as CTSL and MEP, belongs to the peptidase C1 family. It is a lysosomal proteinase whose expression is also up-regulated in the skeletal muscle during starvation (PMID:20088826). It plays an intracellular role in normal intestinal epithelial polarization and initiation of neoplasia (PMID:17622569). CTSL1 also improves cardiac function and inhibits cardiac hypertrophy, inflammation, and fibrosis through blocking AKT/GSK3B signaling (PMID:19096818). The full length protein is 38 kDa with a signal peptide, two propeptide and a glycosylation site. It has been detected the 36 kDa, 39 kDa, 29 kDa and 21 kDa in rat gastrocnemius muscle. These forms of cathepsin L could either be attributed to differences in glycosylation or to partial processing of the proenzyme. (PMID:11696001)

Storage

Storage:

Store at -80°C.

Storage Buffer:

PBS only

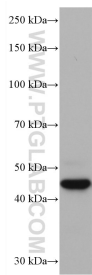
For technical support and original validation data for this product please contact:

T: 1 (888) 4PTGLAB (1-888-478-4522) (toll free in USA), or 1(312) 455-8498 (outside USA)

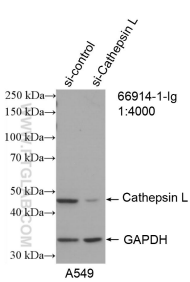
E: proteintech@ptglab.com
W: ptglab.com

This product is exclusively available under Proteintech Group brand and is not available to purchase from any other manufacturer.

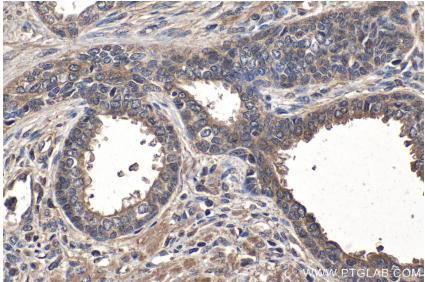
Selected Validation Data



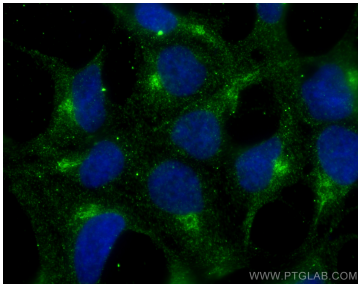
A549 cells were subjected to SDS PAGE followed by western blot with 66914-1-Ig (Cathepsin L antibody) at dilution of 1:5000 incubated at room temperature for 1.5 hours. This data was developed using the same antibody clone with 66914-1-PBS in a different storage buffer formulation.



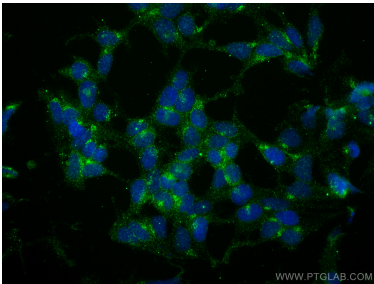
WB result of Cathepsin L antibody (66914-1-Ig; 1:6000; incubated at room temperature for 1.5 hours) with sh-Control and sh-Cathepsin L transfected A549 cells. This data was developed using the same antibody clone with 66914-1-PBS in a different storage buffer formulation.



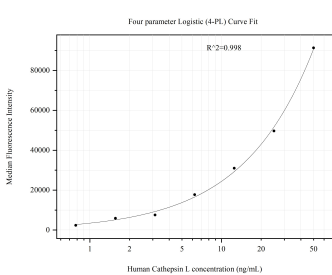
Immunohistochemical analysis of paraffin-embedded human prostate cancer tissue slide using 66914-1-Ig (Cathepsin L antibody) at dilution of 1:1000 (under 40x lens). Heat mediated antigen retrieval with Tris-EDTA buffer (pH 9.0). This data was developed using the same antibody clone with 66914-1-PBS in a different storage buffer formulation.



Immunofluorescent analysis of (4% PFA) fixed HEK-293 cells using Cathepsin L antibody (66914-1-Ig, Clone: 1A12G8) at dilution of 1:800 and CoraLite®488-Conjugated Goat Anti-Mouse IgG(H+L) (SA00013-1). This data was developed using the same antibody clone with 66914-1-PBS in a different storage buffer formulation.



Immunofluorescent analysis of (4% PFA) fixed HEK-293 cells using Cathepsin L antibody (66914-1-Ig, Clone: 1A12G8) at dilution of 1:2000 and CoraLite®488-Conjugated AffiniPure Goat Anti-Mouse IgG(H+L) (SA00013-1). This data was developed using the same antibody clone with 66914-1-PBS in a different storage buffer formulation.



Cytometric bead array standard curve of MP51216-1, Cathepsin L Monoclonal Matched Antibody Pair, PBS Only. Capture antibody: 66914-2-PBS. Detection antibody: 66914-1-PBS. Standard:Ag27951. Range: 0.781-50 ng/mL