

For Research Use Only

# IDH2 Monoclonal antibody

Catalog Number: 66918-1-Ig

Featured Product

1 Publications



## Basic Information

Catalog Number:

66918-1-Ig

Size:

150ul, Concentration: 1800 ug/ml by Nanodrop and 1000 ug/ml by Bradford method using BSA as the standard;

Source:

Mouse

Isotype:

IgG1

Immunogen Catalog Number:

AG8950

GenBank Accession Number:

BC009244

GeneID (NCBI):

3418

UNIPROT ID:

P48735

Full Name:

isocitrate dehydrogenase 2 (NADP+), mitochondrial

Calculated MW:

452 aa, 51 kDa

Observed MW:

41-47 kDa

Purification Method:

Protein G purification

CloneNo.:

1F10A10

Recommended Dilutions:

WB 1:1000-1:4000

## Applications

Tested Applications:

WB, FC (Intra), ELISA

Cited Applications:

WB

Species Specificity:

human

Cited Species:

human

Positive Controls:

WB: Jurkat cells, HEK-293 cells, HepG2 cells, SH-SY5Y cells, K-562 cells

## Background Information

IDH2, also named as IDP and ICD-M, belongs to the isocitrate and isopropylmalate dehydrogenases family. It plays a role in intermediary metabolism and energy production. IDH2 is a mitochondrial NADP-dependent isocitrate dehydrogenase that catalyzes oxidative decarboxylation of isocitrate to alpha-ketoglutarate, producing NADPH. It may tightly associate or interact with the pyruvate dehydrogenase complex. IDH1 and IDH2 mutations could also contribute to tumorigenesis and cancer progression through increased mutagenesis. IDH2 has 2 isoforms with the MW of 51 kDa and 45 kDa, and the mature form is about 47 kDa and 41 kDa with the N-terminal transit peptide cleaved.

## Notable Publications

Author	Pubmed ID	Journal	Application
Shuanghong Zhu	38630819	Sci Adv	WB

## Storage

Storage:

Store at -20°C. Stable for one year after shipment.

Storage Buffer:

PBS with 0.02% sodium azide and 50% glycerol pH 7.3.

Aliquoting is unnecessary for -20°C storage

\*\*\* 20ul sizes contain 0.1% BSA

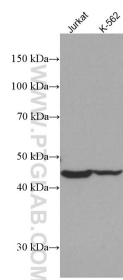
For technical support and original validation data for this product please contact:

T: 1 (888) 4PTGLAB (1-888-478-4522) (toll free in USA), or 1(312) 455-8498 (outside USA)

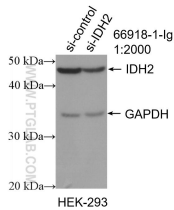
E: proteintech@ptglab.com  
W: ptglab.com

This product is exclusively available under Proteintech Group brand and is not available to purchase from any other manufacturer.

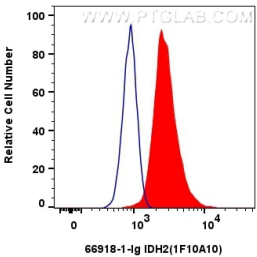
## Selected Validation Data



Various lysates were subjected to SDS PAGE followed by western blot with 66918-1-Ig (IDH2 antibody) at dilution of 1:2000 incubated at room temperature for 1.5 hours.



WB result of IDH2 antibody (66918-1-Ig; 1:2000; incubated at room temperature for 1.5 hours) with sh-Control and sh-IDH2 transfected HEK-293 cells.



1x10<sup>6</sup> HepG2 cells were intracellularly stained with 0.25 ug IDH2 Monoclonal antibody (66918-1-Ig, Clone:1F10A10) and CoraLite®488-Conjugated AffiniPure Goat Anti-Mouse IgG(H+L) (SA00013-1) (red), or 0.25 ug Mouse IgG1 Isotype Control (MOPC-21) (65124-1-Ig, Clone: MOPC-21) (blue). Cells were fixed with 4% PFA and permeabilized with Intracellular Staining Permeabilization Wash Buffer.