

For Research Use Only

IDH2 Monoclonal antibody

Catalog Number: 66918-1-Ig

Featured Product

1 Publications



Basic Information

Catalog Number:

66918-1-Ig

Size:

150ul, Concentration: 1800 ug/ml by Nanodrop and 1000 ug/ml by Bradford method using BSA as the standard;

Source:

Mouse

Isotype:

IgG1

Immunogen Catalog Number:

AG8950

GenBank Accession Number:

BC009244

GeneID (NCBI):

3418

UNIPROT ID:

P48735

Full Name:

isocitrate dehydrogenase 2 (NADP+), mitochondrial

Calculated MW:

452 aa, 51 kDa

Observed MW:

41-47 kDa

Purification Method:

Protein G purification

CloneNo.:

1F10A10

Recommended Dilutions:

WB: 1:1000-1:4000

FC (Intra): 0.25 ug per 10⁶ cells in a 100 µl suspension

Applications

Tested Applications:

WB, FC (Intra), ELISA

Cited Applications:

WB

Species Specificity:

human

Cited Species:

human

Positive Controls:

WB: Jurkat cells, HEK-293 cells, HepG2 cells, SH-SY5Y cells, K-562 cells

FC (Intra): HepG2 cells,

Background Information

IDH2, also named as IDP and ICD-M, belongs to the isocitrate and isopropylmalate dehydrogenases family. It plays a role in intermediary metabolism and energy production. IDH2 is a mitochondrial NADP-dependent isocitrate dehydrogenase that catalyzes oxidative decarboxylation of isocitrate to alpha-ketoglutarate, producing NADPH. It may tightly associate or interact with the pyruvate dehydrogenase complex. IDH1 and IDH2 mutations could also contribute to tumorigenesis and cancer progression through increased mutagenesis. IDH2 has 2 isoforms with the MW of 51 kDa and 45 kDa, and the mature form is about 47 kDa and 41 kDa with the N-terminal transit peptide cleaved.

Notable Publications

Author	Pubmed ID	Journal	Application
Shuanghong Zhu	38630819	Sci Adv	WB

Storage

Storage:

Store at -20°C. Stable for one year after shipment.

Storage Buffer:

PBS with 0.02% sodium azide and 50% glycerol, pH7.3

Aliquoting is unnecessary for -20°C storage

*** 20ul sizes contain 0.1% BSA

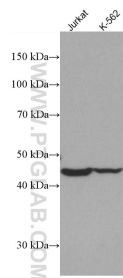
For technical support and original validation data for this product please contact:

T: 1 (888) 4PTGLAB (1-888-478-4522) (toll free in USA), or 1(312) 455-8498 (outside USA)

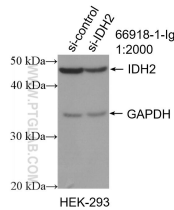
E: proteintech@ptglab.com
W: ptglab.com

This product is exclusively available under Proteintech Group brand and is not available to purchase from any other manufacturer.

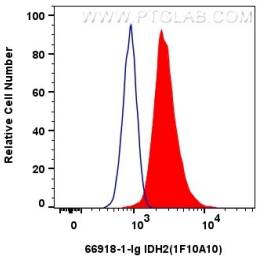
Selected Validation Data



Various lysates were subjected to SDS PAGE followed by western blot with 66918-1-Ig (IDH2 antibody) at dilution of 1:2000 incubated at room temperature for 1.5 hours.



WB result of IDH2 antibody (66918-1-Ig; 1:2000; incubated at room temperature for 1.5 hours) with sh-Control and sh-IDH2 transfected HEK-293 cells.



1x10⁶ HepG2 cells were intracellularly stained with 0.25 ug IDH2 Monoclonal antibody (66918-1-Ig, Clone:1F10A10) and CoraLite®488-Conjugated Goat Anti-Mouse IgG(H+L) (SA00013-1)(red), or 0.25 ug Mouse IgG1 Isotype Control (MOPC-21) (65124-1-Ig, Clone: MOPC-21) (blue). Cells were fixed with 4% PFA and permeabilized with Intracellular Staining Permeabilization Wash Buffer.