

For Research Use Only

PTGER4 Monoclonal antibody

Catalog Number: 66921-1-Ig **4 Publications**



Basic Information

Catalog Number: 66921-1-Ig	GenBank Accession Number: BC101534	Purification Method: Protein A purification
Size: 150ul , Concentration: 1000 ug/ml by Nanodrop;	GeneID (NCBI): 5734	CloneNo.: 4A2A12
Source: Mouse	UNIPROT ID: P35408	Recommended Dilutions: WB 1:5000-1:50000 IHC 1:500-1:2000 IF-P 1:200-1:800
Isotype: IgG2b	Full Name: prostaglandin E receptor 4 (subtype EP4)	
Immunogen Catalog Number: AG19262	Calculated MW: 488 aa, 53 kDa	
	Observed MW: 53 kDa	

Applications

Tested Applications: WB, IHC, IF-P, FC (Intra), ELISA	Positive Controls: WB : pig brain tissue, rat brain tissue, mouse brain tissue, Jurkat cells, K-562 cells IHC : human prostate hyperplasia tissue, mouse brain tissue IF-P : mouse brain tissue,
Cited Applications: WB, IHC	
Species Specificity: human, mouse, rat, pig	
Cited Species: human, mouse	
Note-IHC: suggested antigen retrieval with TE buffer pH 9.0; (*) Alternatively, antigen retrieval may be performed with citrate buffer pH 6.0	

Background Information

PTGER4 (Prostaglandin E2 receptor EP4 subtype, also known as EP4R) is a member of the G-protein coupled receptor family. This protein is one of four receptors identified for prostaglandin E2 (PGE2). May play an important role in regulating renal hemodynamics, intestinal epithelial transport, adrenal aldosterone secretion, and uterine function.

Notable Publications

Author	Pubmed ID	Journal	Application
Yang Liu	35764614	Signal Transduct Target Ther	WB
Ling Xiao	39255799	Cell Metab	WB
Karen T Feehan	38773113	Nat Commun	IHC

Storage

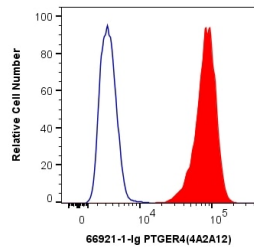
Storage:
Store at -20°C. Stable for one year after shipment.
Storage Buffer:
PBS with 0.02% sodium azide and 50% glycerol pH 7.3.
Aliquoting is unnecessary for -20°C storage

*** 20ul sizes contain 0.1% BSA

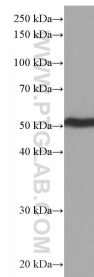
For technical support and original validation data for this product please contact:
T: 1 (888) 4PTGLAB (1-888-478-4522) (toll free in USA), or 1(312) 455-8498 (outside USA)
E: proteintech@ptglab.com
W: ptglab.com

This product is exclusively available under Proteintech Group brand and is not available to purchase from any other manufacturer.

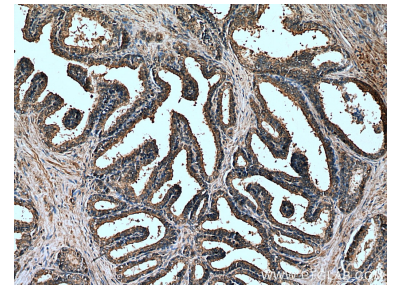
Selected Validation Data



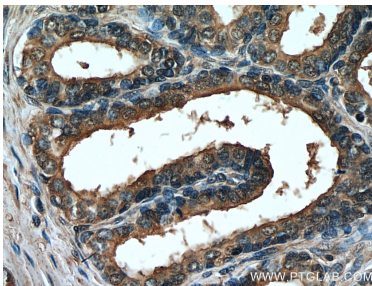
1X10⁶ HepG2 cells were intracellularly stained with 0.4 ug Anti-Human PTGER4 (66921-1-Ig, Clone:4A2A12) and CoraLite®488-Conjugated AffiniPure Goat Anti-Mouse IgG(H+L) at dilution 1:1000 (red), or 0.4 ug Mouse IgG2b Isotype Control (MPC-11) (65128-1-Ig, Clone: MPC-11) (blue). Cells were fixed with 4% PFA and permeabilized with Flow Cytometry Perm Buffer (PF00011-C).



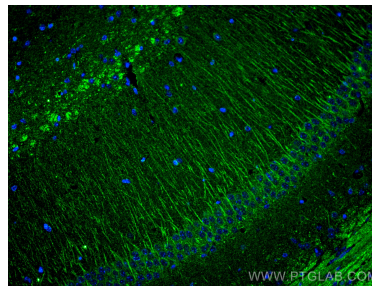
pig brain tissue were subjected to SDS PAGE followed by western blot with 66921-1-Ig (PTGER4 antibody) at dilution of 1:10000 incubated at room temperature for 1.5 hours.



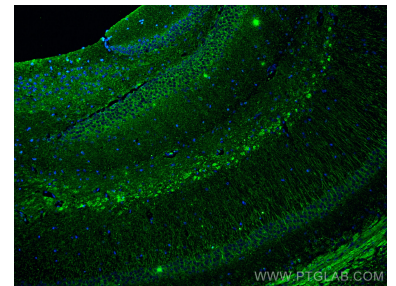
Immunohistochemical analysis of paraffin-embedded human prostate hyperplasia tissue slide using 66921-1-Ig (PTGER4 antibody) at dilution of 1:1000 (under 10x lens). Heat mediated antigen retrieval with Tris-EDTA buffer (pH 9.0).



Immunohistochemical analysis of paraffin-embedded human prostate hyperplasia tissue slide using 66921-1-Ig (PTGER4 antibody) at dilution of 1:1000 (under 40x lens). Heat mediated antigen retrieval with Tris-EDTA buffer (pH 9.0).



Immunofluorescent analysis of (4% PFA) fixed mouse brain tissue using PTGER4 antibody (66921-1-Ig, Clone: 4A2A12) at dilution of 1:400 and CoraLite®488-Conjugated AffiniPure Goat Anti-Mouse IgG(H+L).



Immunofluorescent analysis of (4% PFA) fixed mouse brain tissue using PTGER4 antibody (66921-1-Ig, Clone: 4A2A12) at dilution of 1:400 and CoraLite®488-Conjugated AffiniPure Goat Anti-Mouse IgG(H+L).