

For Research Use Only

PTGER4 Monoclonal antibody, PBS Only



Catalog Number: 66921-1-PBS

Basic Information

Catalog Number:

66921-1-PBS

Size:

100ug, Concentration: 1 mg/ml by Nanodrop;

Source:

Mouse

Isotype:

IgG2b

Immunogen Catalog Number:

AG19262

GenBank Accession Number:

BC101534

GeneID (NCBI):

5734

UNIPROT ID:

P35408

Full Name:

prostaglandin E receptor 4 (subtype EP4)

Calculated MW:

488 aa, 53 kDa

Observed MW:

53 kDa

Purification Method:

Protein A purification

CloneNo.:

4A2A12

Applications

Tested Applications:

WB, IF, FC, IHC, Indirect ELISA

Species Specificity:

Human, Mouse, Rat, Pig

Storage

Storage:

Store at -80°C.

Storage Buffer:

PBS Only

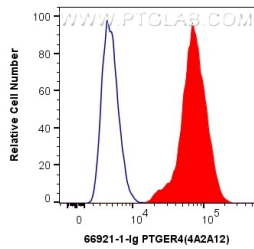
For technical support and original validation data for this product please contact:

T: 1 (888) 4PTGLAB (1-888-478-4522) (toll free in USA), or 1(312) 455-8498 (outside USA)

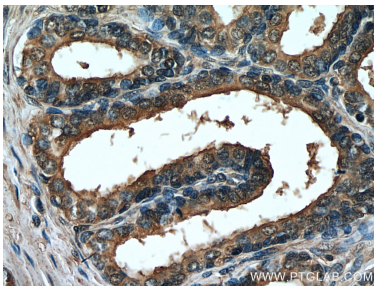
E: proteintech@ptglab.com
W: ptglab.com

This product is exclusively available under Proteintech Group brand and is not available to purchase from any other manufacturer.

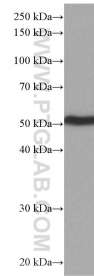
Selected Validation Data



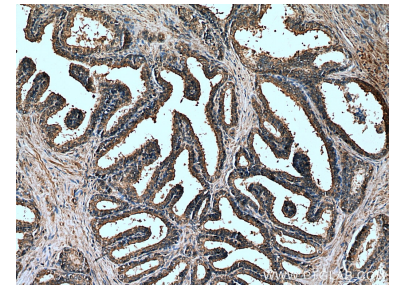
1X10⁶ HepG2 cells were intracellularly stained with 0.4 ug Anti-Human PTGER4 (66921-1-Ig, Clone: 4A2A12) and CoraLite®488-Conjugated AffiniPure Goat Anti-Mouse IgG(H+L) at dilution 1:1000 (red), or 0.4 ug Mouse IgG2b Isotype Control (MPC-11) (65128-1-Ig, Clone: MPC-11) (blue). Cells were fixed with 4% PFA and permeabilized with Flow Cytometry Perm Buffer (PF00011-C). This data was developed using the same antibody clone with 66921-1-PBS in a



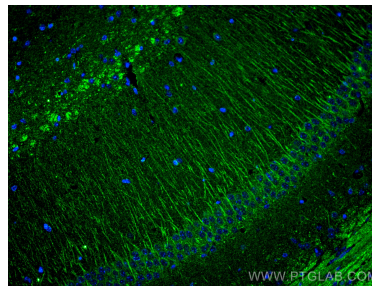
Immunohistochemical analysis of paraffin-embedded human prostate hyperplasia tissue slide using 66921-1-Ig (PTGER4 antibody) at dilution of 1:1000 (under 40x lens). Heat mediated antigen retrieval with Tris-EDTA buffer (pH 9.0). This data was developed using the same antibody clone with 66921-1-PBS in a different storage buffer formulation.



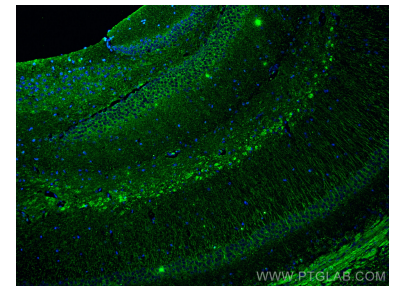
pig brain tissue were subjected to SDS PAGE followed by western blot with 66921-1-Ig (PTGER4 antibody) at dilution of 1:10000 incubated at room temperature for 1.5 hours. This data was developed using the same antibody clone with 66921-1-PBS in a different storage buffer formulation.



Immunohistochemical analysis of paraffin-embedded human prostate hyperplasia tissue slide using 66921-1-Ig (PTGER4 antibody) at dilution of 1:1000 (under 10x lens). Heat mediated antigen retrieval with Tris-EDTA buffer (pH 9.0). This data was developed using the same antibody clone with 66921-1-PBS in a different storage buffer formulation.



Immunofluorescent analysis of (4% PFA) fixed mouse brain tissue using PTGER4 antibody (66921-1-Ig, Clone: 4A2A12) at dilution of 1:400 and CoraLite®488-Conjugated AffiniPure Goat Anti-Mouse IgG(H+L). This data was developed using the same antibody clone with 66921-1-PBS in a different storage buffer formulation.



Immunofluorescent analysis of (4% PFA) fixed mouse brain tissue using PTGER4 antibody (66921-1-Ig, Clone: 4A2A12) at dilution of 1:400 and CoraLite®488-Conjugated AffiniPure Goat Anti-Mouse IgG(H+L). This data was developed using the same antibody clone with 66921-1-PBS in a different storage buffer formulation.