

For Research Use Only

Integrin Beta 4 Monoclonal antibody

Catalog Number: 66922-2-Ig



Basic Information

Catalog Number: 66922-2-Ig	GenBank Accession Number: BC126411	Purification Method: Protein A purification
Size: 150ul , Concentration: 2300 ug/ml by Nanodrop and 1000 ug/ml by Bradford method using BSA as the standard;	GeneID (NCBI): 3691	CloneNo.: 1C2A11
Source: Mouse	UNIPROT ID: P16144	Recommended Dilutions: WB 1:5000-1:50000 IHC 1:1000-1:4000 IF/ICC 1:1000-1:4000
Isotype: IgG1	Full Name: integrin, beta 4	
Immunogen Catalog Number: AG17395	Calculated MW: 1752 aa, 195 kDa	
	Observed MW: 200-210 kDa	

Applications

Tested Applications: WB, IHC, IF/ICC, ELISA	Positive Controls:
Species Specificity: human	WB : HeLa cells, A549 cells, BxPC-3 cells, SW 1990 cells, SKOV-3 cells, MCF-7 cells, Calu-3 cells
Note-IHC: suggested antigen retrieval with TE buffer pH 9.0; (*) Alternatively, antigen retrieval may be performed with citrate buffer pH 6.0	IHC : human skin cancer tissue,
	IF/ICC : A431 cells,

Background Information

Integrins are cell adhesion receptors that are heterodimers composed of non-covalently associated alpha and beta subunits. Integrin beta-4 is predominantly expressed in squamous epithelial cells, endothelial cells, immature thymocytes, Schwann cells, and fibroblasts of the peripheral nervous system (PMID: 28084395). Integrin beta-4 pairs with alpha-6, and the heterodimeric integrin alpha-6/beta-4 is a receptor for laminin. Integrin alpha-6/beta-4 plays a critical structural role in the hemidesmosome of epithelial cells, and also plays a role in the invasive and metastatic phenotype of various cancers.

Storage

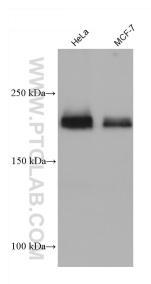
Storage:
Store at -20°C. Stable for one year after shipment.
Storage Buffer:
PBS with 0.02% sodium azide and 50% glycerol pH 7.3.
Aliquoting is unnecessary for -20°C storage

*** 20ul sizes contain 0.1% BSA

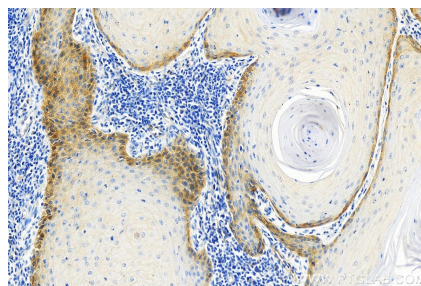
For technical support and original validation data for this product please contact:
T: 1 (888) 4PTGLAB (1-888-478-4522) (toll free in USA), or 1(312) 455-8498 (outside USA)
E: proteintech@ptglab.com
W: ptglab.com

This product is exclusively available under Proteintech Group brand and is not available to purchase from any other manufacturer.

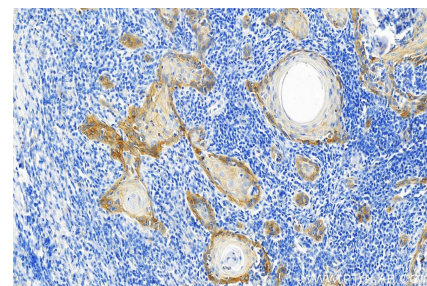
Selected Validation Data



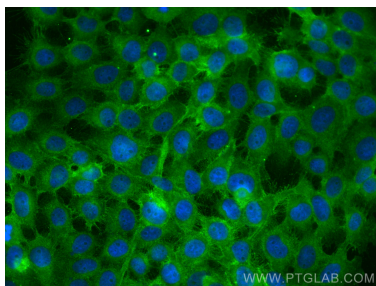
Various lysates were subjected to SDS PAGE followed by western blot with 66922-2-Ig (Integrin Beta 4 antibody) at dilution of 1:10000 incubated at room temperature for 1.5 hours.



Immunohistochemical analysis of paraffin-embedded skin cancer slide using 66922-2-Ig (Integrin Beta 4 antibody) at dilution of 1:2000 (under 20x lens). Heat mediated antigen retrieval with Tris-EDTA buffer (pH 9.0).



Immunohistochemical analysis of paraffin-embedded skin cancer slide using 66922-2-Ig (Integrin Beta 4 antibody) at dilution of 1:2000 (under 20x lens). Heat mediated antigen retrieval with Tris-EDTA buffer (pH 9.0).



Immunofluorescent analysis of (-20°C Methanol) fixed A431 cells using Integrin Beta 4 antibody (66922-2-Ig, Clone: 1C2A11) at dilution of 1:2000 and Coralite®488-Conjugated AffiniPure Goat Anti-Mouse IgG(H+L).