

For Research Use Only

ROR1 Monoclonal antibody, PBS Only (Detector)

Catalog Number: 66923-1-PBS

Featured Product



Basic Information

Catalog Number:

66923-1-PBS

Size:

100ug, Concentration: 1mg/ml by Nanodrop;

Source:

Mouse

Isotype:

IgG1

Immunogen Catalog Number:

AG14586

GenBank Accession Number:

BC006374

GeneID (NCBI):

4919

UNIPROT ID:

Q01973

Full Name:

receptor tyrosine kinase-like orphan receptor 1

Calculated MW:

937 aa, 104 kDa

Observed MW:

130 kDa

Purification Method:

Protein A purification

CloneNo.:

1F5D8

Applications

Tested Applications:

WB, IHC, Cytometric bead array, Indirect ELISA

Species Specificity:

human, mouse

Product Information

66923-1-PBS targets ROR1 as part of a matched antibody pair:

MP51139-1: 66923-2-PBS capture and 66923-1-PBS detection (validated in Cytometric bead array)

MP51139-2: 66923-3-PBS capture and 66923-1-PBS detection (validated in Cytometric bead array)

Unconjugated mouse monoclonal antibody pair in PBS only (BSA and azide free) storage buffer at a concentration of 1 mg/mL, ready for conjugation.

This conjugation ready format makes antibodies ideal for use in many applications including: ELISAs, multiplex assays requiring matched pairs, mass cytometry, and multiplex imaging applications. Antibody use should be optimized by the end user for each application and assay.

Background Information

ROR1 is a member of the RTK family of orphan receptors related to muscle-specific kinase and Trk neurotrophin receptors (PMID: 18546292). ROR1 is primarily expressed by neural crest cells during embryogenesis. High expression of ROR1 is reported in many types of malignancies and is thought to be involved in tumor growth, apoptosis, and epithelial-mesenchymal transition (PMID: 26245996). The human ROR1 gene encodes a 937 amino acid protein with an Ig-like domain, a cysteine-rich domain, a kringle domain, a tyrosine kinase domain, and a proline-rich domain. The calculated molecular weight of ROR1 is 104 kDa, but ROR1 has multiple N-glycosylation sites that generate post-translationally modified ROR1 at 130 kDa (PMID: 24752542).

Storage

Storage:

Store at -80°C.

Storage Buffer:

PBS Only

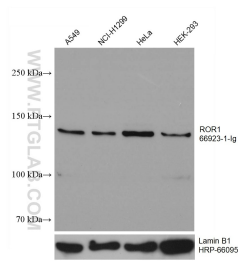
For technical support and original validation data for this product please contact:

T: 1 (888) 4PTGLAB (1-888-478-4522) (toll free in USA), or 1(312) 455-8498 (outside USA)

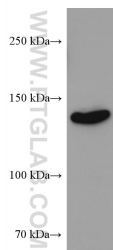
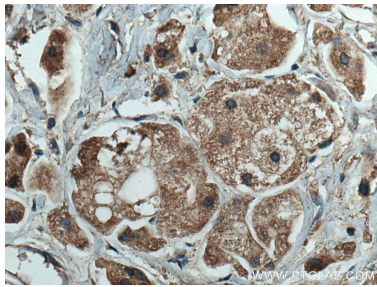
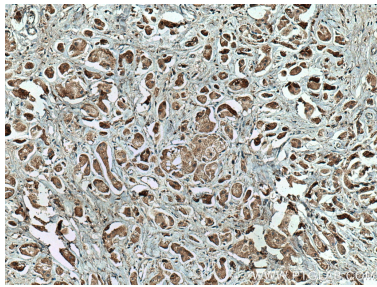
E: proteintech@ptglab.com
W: ptglab.com

This product is exclusively available under Proteintech Group brand and is not available to purchase from any other manufacturer.

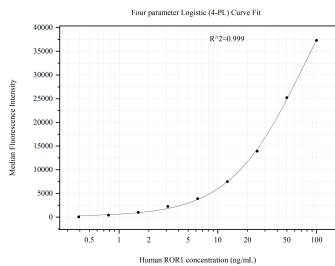
Selected Validation Data



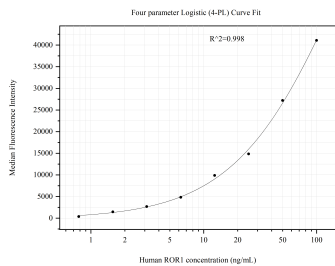
Various lysates were subjected to SDS PAGE followed by western blot with 66923-1-Ig (ROR1 antibody) at dilution of 1:3000 incubated at room temperature for 1.5 hours. The membrane was stripped and reblotted with HRP-conjugated Lamin B1 Monoclonal antibody (HRP-66095) as loading control. This data was developed using the same antibody clone with 66923-1-PBS in a different storage buffer formulation.



NIH/3T3 cells were subjected to SDS PAGE followed by western blot with 66923-1-Ig (ROR1 antibody) at dilution of 1:3000 incubated at room temperature for 1.5 hours. This data was developed using the same antibody clone with 66923-1-PBS in a different storage buffer formulation.



Cytometric bead array standard curve of MP51139-1, ROR1 Monoclonal Matched Antibody Pair, PBS Only. Capture antibody: 66923-2-PBS. Detection antibody: 66923-1-PBS. Standard:Ag14586. Range: 0.391-100 ng/mL.



Cytometric bead array standard curve of MP51139-2, ROR1 Monoclonal Matched Antibody Pair, PBS Only. Capture antibody: 66923-3-PBS. Detection antibody: 66923-1-PBS. Standard:Ag14586. Range: 0.781-100 ng/mL.