

For Research Use Only

DDX21 Monoclonal antibody, PBS Only

Catalog Number: 66925-1-PBS



Basic Information

Catalog Number: 66925-1-PBS	GenBank Accession Number: BC008071	Purification Method: Protein A purification
Size: 100ug, Concentration: 1mg/ml by Nanodrop;	GeneID (NCBI): 9188	CloneNo.: 1B9C8
Source: Mouse	UNIPROT ID: Q9NR30	
Isotype: IgG1	Full Name: DEAD (Asp-Glu-Ala-Asp) box polypeptide 21	
Immunogen Catalog Number: AG17850	Calculated MW: 783 aa, 87 kDa	
	Observed MW: 90-95 kDa	

Applications

Tested Applications:
WB, IHC, IF/ICC, FC (Intra), Indirect ELISA

Species Specificity:
human

Background Information

DDX21 protein belongs to DEAD box protein family which is characterized by the conserved motif Asp-Glu-Ala-Asp (DEAD). As a putative RNA helicase, DDX21 unwinds double-stranded RNA, folds single-stranded RNA and is involved in process including ribosomal RNA biogenesis, RNA editing and general transcription. Interaction of DDX21 and c-Jun was reported in ribosomal RNA processing.

Storage

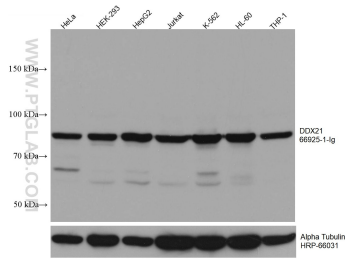
Storage:
Store at -80°C.

Storage Buffer:
PBS Only

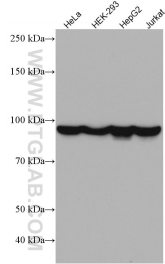
For technical support and original validation data for this product please contact:
T: 1 (888) 4PTGLAB (1-888-478-4522) (toll free in USA), or 1(312) 455-8498 (outside USA)
E: proteintech@ptglab.com
W: ptglab.com

This product is exclusively available under Proteintech Group brand and is not available to purchase from any other manufacturer.

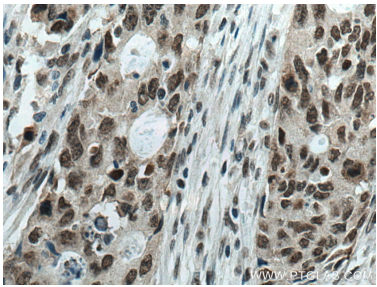
Selected Validation Data



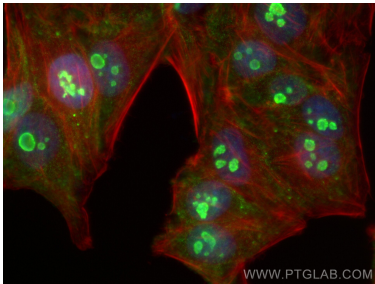
Various lysates were subjected to SDS PAGE followed by western blot with 66925-1-Ig (DDX21 antibody) at dilution of 1:50000 incubated at room temperature for 1.5 hours. The membrane was stripped and reblotted with HRP-conjugated Alpha Tubulin Monoclonal antibody (HRP-66031) as loading control. This data was developed using the same antibody clone with 66925-1-PBS in a different storage buffer formulation.



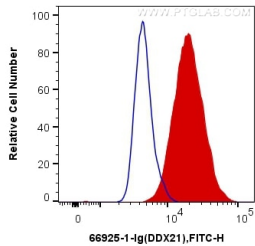
Various lysates were subjected to SDS PAGE followed by western blot with 66925-1-Ig (DDX21 antibody) at dilution of 1:5000 incubated at room temperature for 1.5 hours. This data was developed using the same antibody clone with 66925-1-PBS in a different storage buffer formulation.



Immunohistochemical analysis of paraffin-embedded human colon cancer tissue slide using 66925-1-Ig (DDX21 antibody) at dilution of 1:500 (under 40x lens). Heat mediated antigen retrieval with Tris-EDTA buffer (pH 9.0). This data was developed using the same antibody clone with 66925-1-PBS in a different storage buffer formulation.



Immunofluorescent analysis of (4% PFA) fixed HepG2 cells using DDX21 antibody (66925-1-Ig, Clone: 1B9C8) at dilution of 1:800 and CoraLite®488-Conjugated Goat Anti-Mouse IgG(H+L) (SA00013-1, CL594-Phalloidin (red). This data was developed using the same antibody clone with 66925-1-PBS in a different storage buffer formulation.



1X10⁶ HepG2 cells were intracellularly stained with 0.2 ug Anti-Human DDX21 (66925-1-Ig, Clone:1B9C8) and CoraLite®488-Conjugated AffiniPure Goat Anti-Mouse IgG(H+L) at dilution 1:1000 (red), or 0.2 ug Mouse IgG1 Isotype Control (66360-1-Ig, Clone: T1F8D3F10) (blue). Cells were fixed and permeabilized with Transcription Factor Staining Buffer Kit (PF00011). This data was developed using the same antibody clone with 66925-1-PBS in a different storage buffer