

For Research Use Only

# CFTR Monoclonal antibody

Catalog Number: 66928-1-Ig



## Basic Information

<b>Catalog Number:</b> 66928-1-Ig	<b>GenBank Accession Number:</b> NM_000492	<b>Purification Method:</b> Protein G purification
<b>Size:</b> 150ul , Concentration: 1900 µg/ml by Nanodrop and 1000 µg/ml by Bradford method using BSA as the standard;	<b>GeneID (NCBI):</b> 1080	<b>CloneNo.:</b> 2F4A8
<b>Source:</b> Mouse	<b>Full Name:</b> cystic fibrosis transmembrane conductance regulator (ATP-binding cassette sub-family C, member 7)	<b>Recommended Dilutions:</b> WB 1:5000-1:50000
<b>Isotype:</b> IgG1	<b>Calculated MW:</b> 168 kDa	
<b>Immunogen Catalog Number:</b> AG27810	<b>Observed MW:</b> 150 kDa	

## Applications

**Tested Applications:**  
WB, ELISA

**Species Specificity:**  
Human, mouse, rat, rabbit

**Positive Controls:**  
WB : Calu-3 cells, HeLa cells, A431 cells, A375 cells, A549 cells, NCI-H1299 cells, HepG2 cells, MCF-7 cells, HT-29 cells, Caco-2 cells, MOLT-4 cells, rabbit brain tissue, rat brain tissue, mouse brain tissue

## Background Information

CFTR is a member of the ATP-binding cassette (ABC) family of membrane transport proteins, functioning as a chloride channel responsible for ion flow across epithelial surfaces of lung, sinuses, pancreas, intestine, and liver. Mutations of CFTR cause cystic fibrosis (CF), a disorder affecting the respiratory, digestive, reproductive systems and sweat glands.

## Storage

**Storage:**  
Store at -20°C. Stable for one year after shipment.

**Storage Buffer:**  
PBS with 0.02% sodium azide and 50% glycerol pH 7.3.

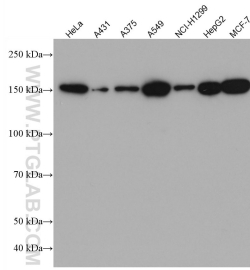
Aliquoting is unnecessary for -20°C storage

\*\*\* 20ul sizes contain 0.1% BSA

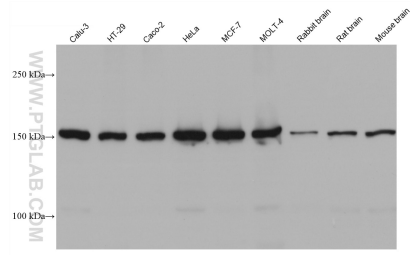
For technical support and original validation data for this product please contact:  
T: 1 (888) 4PTGLAB (1-888-478-4522) (toll free in USA), or 1(312) 455-8498 (outside USA)      E: proteintech@ptglab.com  
W: ptglab.com

This product is exclusively available under Proteintech Group brand and is not available to purchase from any other manufacturer.

## Selected Validation Data



Various lysates were subjected to SDS PAGE followed by western blot with 66928-1-Ig (CFTR antibody) at dilution of 1:2000 incubated at room temperature for 1.5 hours.



Various lysates were subjected to SDS PAGE followed by western blot with 66928-1-Ig (CFTR antibody) at dilution of 1:10000 incubated at room temperature for 1.5 hours.