

For Research Use Only

CFTR Monoclonal antibody

Catalog Number: 66928-1-Ig

Featured Product

1 Publications



Basic Information

Catalog Number:

66928-1-Ig

Size:

150ul, Concentration: 1900 ug/ml by Nanodrop and 1000 ug/ml by Bradford method using BSA as the standard;

Source:

Mouse

Isotype:

IgG1

Immunogen Catalog Number:

AG27810

GenBank Accession Number:

NM_000492

GeneID (NCBI):

1080

UNIPROT ID:

P13569

Full Name:

cystic fibrosis transmembrane conductance regulator (ATP-binding cassette sub-family C, member 7)

Calculated MW:

168 kDa

Observed MW:

150 kDa

Purification Method:

Protein G purification

CloneNo.:

2F4A8

Recommended Dilutions:

WB 1:5000-1:50000

IHC 1:250-1:1000

Applications

Tested Applications:

WB, IHC, ELISA

Cited Applications:

WB

Species Specificity:

human, mouse, rat, rabbit

Cited Species:

mouse

Note-IHC: suggested antigen retrieval with TE buffer pH 9.0; (*) Alternatively, antigen retrieval may be performed with citrate buffer pH 6.0

Positive Controls:

WB : Calu-3 cells, HEK-293T cells, HeLa cells, HT-29 cells, Caco-2 cells, MCF-7 cells, MOLT-4 cells, rabbit brain tissue, rat brain tissue, mouse brain tissue, A431 cells, A375 cells, A549 cells, NCI-H1299 cells, HepG2 cells

IHC : human lung tissue,

Background Information

CFTR is a member of the ATP-binding cassette (ABC) family of membrane transport proteins, functioning as a chloride channel responsible for ion flow across epithelial surfaces of lung, sinuses, pancreas, intestine, and liver. Mutations of CFTR cause cystic fibrosis (CF), a disorder affecting the respiratory, digestive, reproductive systems and sweat glands.

Notable Publications

Author	Pubmed ID	Journal	Application
Rui Hu	38563333	Redox Rep	WB

Storage

Storage:

Store at -20°C. Stable for one year after shipment.

Storage Buffer:

PBS with 0.02% sodium azide and 50% glycerol pH 7.3.

Aliquoting is unnecessary for -20°C storage

*** 20ul sizes contain 0.1% BSA

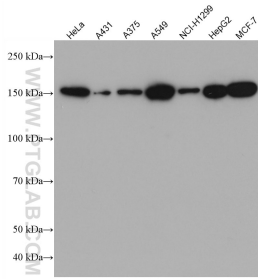
For technical support and original validation data for this product please contact:

T: 1 (888) 4PTGLAB (1-888-478-4522) (toll free in USA), or 1(312) 455-8498 (outside USA)

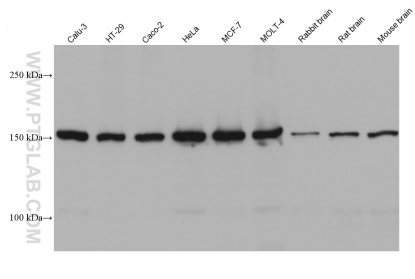
E: proteintech@ptglab.com
W: ptglab.com

This product is exclusively available under Proteintech Group brand and is not available to purchase from any other manufacturer.

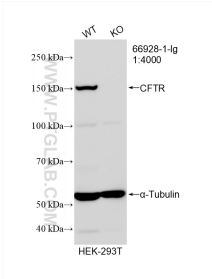
Selected Validation Data



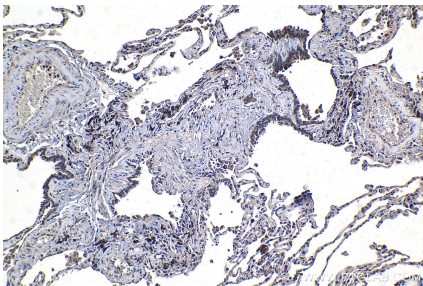
Various lysates were subjected to SDS PAGE followed by western blot with 66928-1-Ig (CFTR antibody) at dilution of 1:2000 incubated at room temperature for 1.5 hours.



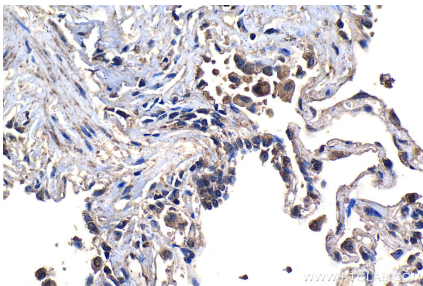
Various lysates were subjected to SDS PAGE followed by western blot with 66928-1-Ig (CFTR antibody) at dilution of 1:10000 incubated at room temperature for 1.5 hours.



WB result of CFTR antibody (66928-1-Ig; 1:4000; room temperature for 1.5 hours) with wild-type and CFTR knockout HEK-293T cells.



Immunohistochemical analysis of paraffin-embedded human lung tissue slide using 66928-1-Ig (CFTR antibody) at dilution of 1:500 (under 10x lens). Heat mediated antigen retrieval with Tris-EDTA buffer (pH 9.0).



Immunohistochemical analysis of paraffin-embedded human lung tissue slide using 66928-1-Ig (CFTR antibody) at dilution of 1:500 (under 40x lens). Heat mediated antigen retrieval with Tris-EDTA buffer (pH 9.0).